

PHILLIPS & STUBBS



coastal +
COUNTRY



Set within the High Weald National Landscape (AONB) and occupying an idyllic setting off a quiet country lane surrounded by woodland and undulating countryside on the outskirts of the village of Peasmarsh, which offers a range of local services including a large independently owned supermarket, a primary school, two public houses, Tillingham Winery and the Parish Church. The Ancient Town and Cinque Port of Rye is 6 miles and is famed for its historical associations, period architecture, medieval fortifications and cobbled ways. The town offers a range of local shops, restaurants and train services on the Eastbourne to Ashford branch line with fast connections to London Stratford and St Pancras (37 minutes). Inland are the towns of Battle with its Abbey and Tenterden with its tree lined High Street and green swards which also offers a good range of shopping facilities and amenities. The coast is within easy reach and the area boasts a host of tourist and leisure attractions including Great Dixter, Bodiam Castle and Smallhythe Place. Secondary schools include Robertsbridge Community College and Rye College. Private schools in the area include Vine Hall at Robertsbridge, St Ronan's at Hawkhurst, Benenden Girl's School and Buckswood School at Guestling.

A substantial detached barn conversion affording over 4000 sqft of beautifully presented and versatile living space including a studio/home office. The refurbished accommodation is arranged over two levels, as shown on the floor plan, with stripped old pine and oak floorboards throughout much of the space.

An oak framed entrance porch with a slate tiled threshold and front door opens to an entrance hall with a cloakroom with modern period style fittings and a turned staircase to the first-floor galleried landing. The triple aspect sitting room has exposed timber framing, French doors opening to the terrace and an inglenook style brick fireplace with a fitted woodburning stove on a flagstone hearth. Adjoining is a snug with exposed beams and old brickwork to one wall. The double aspect farmhouse style kitchen/breakfast room, which has exposed brickwork to two walls and a part glazed door to the garden, is fitted with a range of cabinets comprising base cupboards and drawers beneath preparation surfaces with an inset stainless-steel sink, an inset electric hob and a two oven AGA. Adjoining is a utility room with base cupboards, work

surfaces, an inset sink and plumbing for a washing machine and dishwasher. Open to the kitchen is a small reading area with steps down to a conservatory with exposed brickwork to two walls, glazed double doors to the front and rear gardens and a connecting door to the accommodation currently arranged to provide a dining room with a vaulted ceiling, exposed timbers and sliding glazed doors opening to the deck and garden. Double doors lead through to a family room / bedroom overlooking the garden with a vaulted ceiling, a high-level porthole window and a fitted wood burning stove.

To the far end is a double aspect studio/home office with a vaulted ceiling with exposed architectural tie bars. Also on the ground floor is a cloakroom and a shower room, both with contemporary fittings.

On the first floor there is a galleried landing with exposed timber framing. The triple aspect principal bedroom has a vaulted ceiling with exposed beams, built in wardrobe cupboards and an en suite shower room with a close coupled wc, wash basin and shower enclosure. There are three further bedrooms of a good size, together with a bath/shower room with a walk-in shower, close coupled wc, wash basin and bath.

Outside: The property is approached from the lane via a pair of 5 bar gates and a sweeping pea beach driveway leading to an extensive parking and turning area for multiple vehicles with access to a double garage with an electric door, gardener's wc, wood store and first floor store. There is a further garage to the side with timber double doors. The property is centrally positioned within the delightful park-like gardens and grounds of about 2.5 acres which adjoin farmland, being set down to lawn, grassland and wild flower meadows with mature oak trees, a large pond and running along the entire width of the rear of the house is a wide paved terrace and raised deck.

Local Authority: Rother District Council. Council Tax Band G
Mains electricity and water. Mantair Sewage treatment plant.
Predicted mobile phone coverage: 02
Broadband speed: Standard 5Mbps available. Source Ofcom

Guide price: £1,795,000 Freehold

Dinglesden Farm, Hayes Lane, Peasmarsh, Rye, East Sussex TN31 6XW



A beautifully presented, refurbished barn conversion affording light, contemporary living accommodation with large, versatile studio space and lovely southerly views set off a quiet country lane in a tranquil rural location in park-like gardens and grounds of just over 2.5 acres adjoining farmland.

- Oak framed entrance porch • Entrance hall • Sitting room and adjoining snug • Kitchen/breakfast room • Utility room • Conservatory • Dining room • Family room / bedroom • Studio/home office • Cloakroom • Shower room • Landing • Principal bedroom with en suite shower room • Three further bedrooms • Family bath/shower room • Oil central heating • Mostly double glazed • Solar panels • EPC rating D • Garaging for multiple vehicles • Gardens and grounds of just over 2.5 acres •



Directions:

Entering Peasmarch from the Rye direction, turn left into Church Lane and continue on past the church. At the next junction, by Peasmarch Place, bear left into Starvecrow Lane (unmarked). Continue down Starvecrow Lane where you will then see a turning on your left to Hayes Lane. Continue along Hayes Lane and the entrance to the property will be seen on your right after about 400 yards.

From London head south on the A21 bypassing Tunbridge Wells. In Flimwell turn left onto the A268 signed Hawkhurst. Continue through Hawkhurst and on towards Rye passing over a narrow bridge with traffic lights at Newenden (5.3 miles). Continue along the A268, take the next left turn signed towards Rye and proceed for about 4 miles. On reaching Peasmarch proceed through the village passing Jempsons and turn right into Church Lane. Opposite the entrance to Peasmarch Place turn left into Starvecrow Lane and proceed for about 1 mile. Turn left into Lane Hayes Lane and the entrance to the property will be seen on your right after about 400 yards.

[what3words](#) [dote.salaried.activity](#)

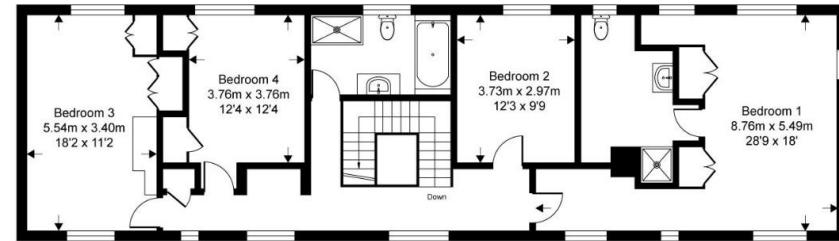
Hayes Lane

Approximate Gross Internal Area = 352.8 sq m / 3798 sq ft

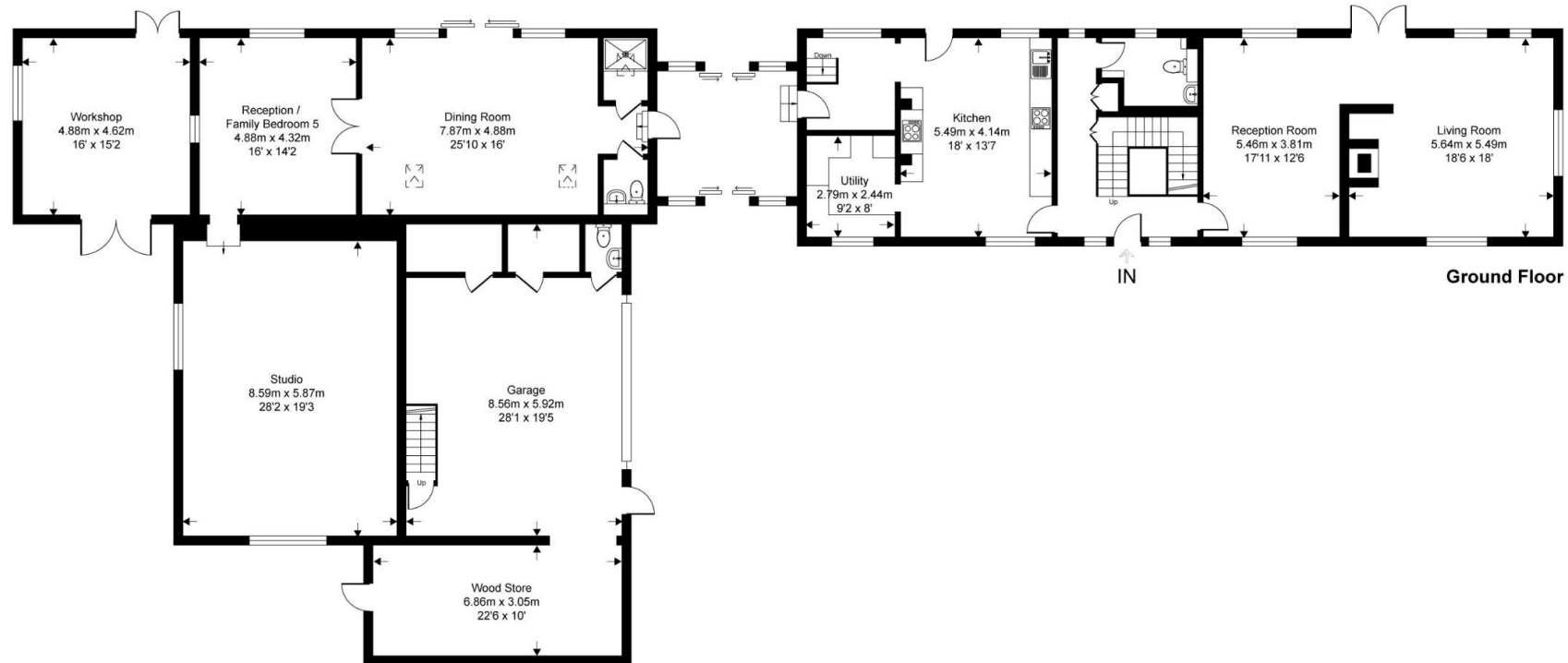
Approximate Garage Internal Area = 51 sq m / 549 sq ft

Approximate Outbuilding Internal Area = 43.4 sq m / 468 sq ft

Approximate Total Internal Area = 447.2 sq m / 4815 sq ft



First Floor



Ground Floor

This floor plan is for representation purposes only as defined by the RICS code of Measuring Practice (and IPMS where requested) and should be used as such by any prospective purchaser. Whilst every attempt has been made to ensure the accuracy contained here, the measurement of doors, windows and rooms is approximate and no responsibility is taken for any error, omission or mis-statement. Specifically no guarantee is given on the total area of the property if quoted on the plan. Any figure provided is for guidance only and should not be used for valuation purposes.

PHILLIPS & STUBBS



Viewing Arrangements : Strictly by appointment with Phillips & Stubbs

Important Notice:

Phillips & Stubbs, their clients and any joint agents give notice that:

1. They are not authorised to make or give any representations or warranties in relation to the property either here or elsewhere, either on our own behalf or on behalf of their clients or otherwise. They assume no responsibility for any statement that may be made in these particulars. These particulars do not form part of any offer or contract and must not be relied upon as statements or representations of fact.
2. These particulars have been provided in good faith and, whilst we endeavour to make them accurate and reliable, if there are any points of particular importance to you please contact our office and we will make further enquiries on your behalf. Any areas, measurements or distances are approximate. The text, photographs and plans are for guidance only and are not necessarily comprehensive. It should not be assumed that the property has all necessary planning, building regulation or other consents regarding alterations. Phillips and Stubbs have not tested any services, equipment or facilities. Purchasers must satisfy themselves by inspection or otherwise. All contents, fixtures, fittings and electrical appliances are expressly excluded from the sale unless specifically mentioned in the text of the sales particulars. A wide angle lens has been used in the photography.



47-49 Cinque Ports Street, Rye, East Sussex TN31 7AN
Mayfair Office, 15 Thayer Street, London W1U 3JT

01797 227338
0870 1127099

rye@phillipsandstubbs.co.uk
mayfair@phillipsandstubbs.co.uk

www.phillipsandstubbs.co.uk