

PHILLIPS & STUBBS



coastal +
COUNTRY



The property nestles behind the rolling sand dunes, just yards from Camber Sands, the beautiful sandy beach where a variety of activities can be enjoyed including kite surfing, kite buggying, surfing, land yachting, horse riding, fishing as well as numerous other activities both on the beach and nearby including wildlife havens at Dungeness and Rye Harbour Nature Reserve. Watersports are taught at Rye Watersports Lake (1 mile). Nearby road links provide access to the M20 (Junction 10) Ashford which provides further links by both road and rail to London with a high speed link from Ashford to London St. Pancras in 37 minutes and from there to Paris, Brussels and Amsterdam via Eurostar. Camber village offers a range of facilities for day to day needs as well as pubs and restaurants. The nearby Ancient Town and Cinque Port of Rye affords a wider range of amenities. Rye Citadel is famed for its historical associations cobbled streets and architecture with St Mary's Church and the popular, Mermaid Inn. Other activities and facilities in the area include Rye Golf Club (situated in Camber).

A modern three storey house forming part of an ultra-modern ecofriendly development that combines quality and contemporary design with environmental sustainability. The construction is of traditional block work spun walls clad with cedar wood shingles and a specialist render system with a colourful curved turret to the front elevation all beneath a Bauder environmentally bio diverse roof. The property was designed by the award winning architects, Knox Bhavan, to be energy efficient with low carbon emissions, low heat loss and controlled solar gain. Internally, the living accommodation is spacious and light with clean lines giving a contemporary feel. The principal living areas have engineered oak flooring. There is a timber decked balcony on each floor with galvanized steel balustrades together with a paved terrace that leads on to the communal garden.

The property is approached via a flush panelled front door opening into an entrance lobby with stairs off to the first floor. On the ground floor, there is a versatile living space or garage currently used as a games room with a utility area with plumbing for a washing machine. To the rear is a family room with an en-suite shower and a door to the rear terrace and communal dune scape area.

The split level first floor accommodation has a main living/dining area which is light and airy with full height glazed double doors with shutters opening onto a decked terrace with steps leading down to the communal garden. The adjoining kitchen is well fitted and equipped with storage cupboards and drawers with white lacquered door fronts, solid beech woodblock work surfaces with inset stainless steel sink, stainless steel oven, induction hob, integrated dishwasher, fridge and eye level microwave.

To the front of the property is a **double bedroom** with glazed door to small drum balcony and adjacent. An adjoining **family bathroom** has contemporary white china fittings comprising a panelled bath with shower attachment and screen, w.c and wash basin.

On the second floor, the **master bedroom** has glazed double doors opening onto a balcony and a tiled **en-suite shower room** with a tiled double cubicle and power shower, wash basin, and w.c.

Outside: There is a central landscaped area, which is contoured and planted to imitate the adjoining dunes, from where paths lead to Old Lydd Road and the beach.

Parking: There is space to park one vehicle to the front of the integral garage.

Note: The photograph showing the beach are taken from the sand dunes and not from the property.

Guide price: £415,000 Freehold

19 Royal William Square, Camber, Near Rye, East Sussex TN31 7RX



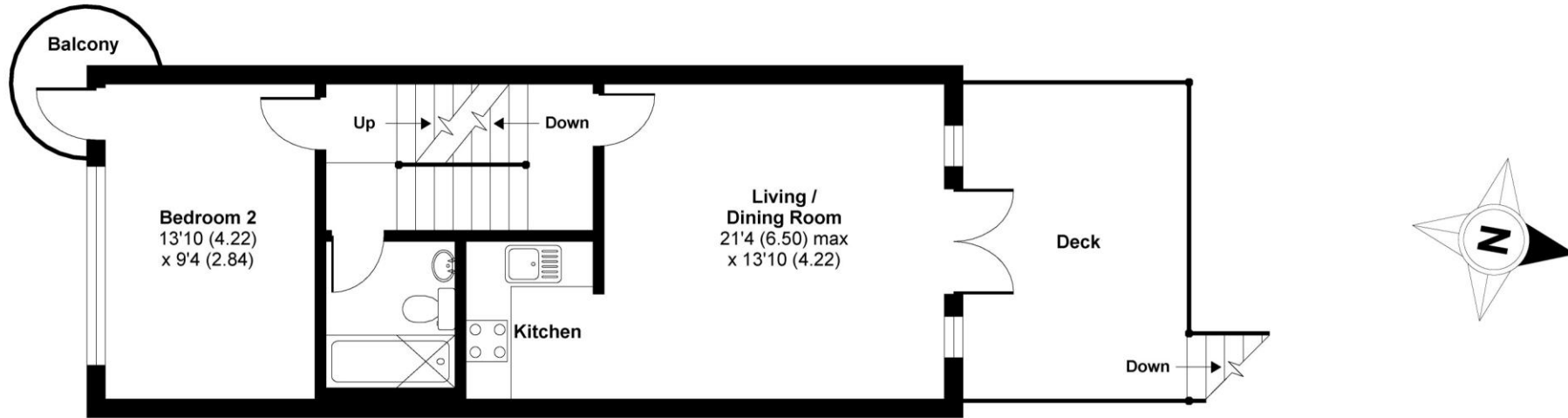
A modern, architect designed three storey eco-friendly house affording versatile living accommodation and forming part of an innovative ultra-modern development nestling close to the spectacular beach.

- Entrance lobby • Garage/games room • Family room with shower
- First floor open plan living /dining room with kitchen area opening onto a decked terrace
- Guest double bedroom with small drum balcony and adjacent bathroom • Second floor master bedroom with en-suite shower and balcony
- Geo thermal space heating • Double glazing • Solar water heating • Energy rating C • Planted communal garden space • Parking

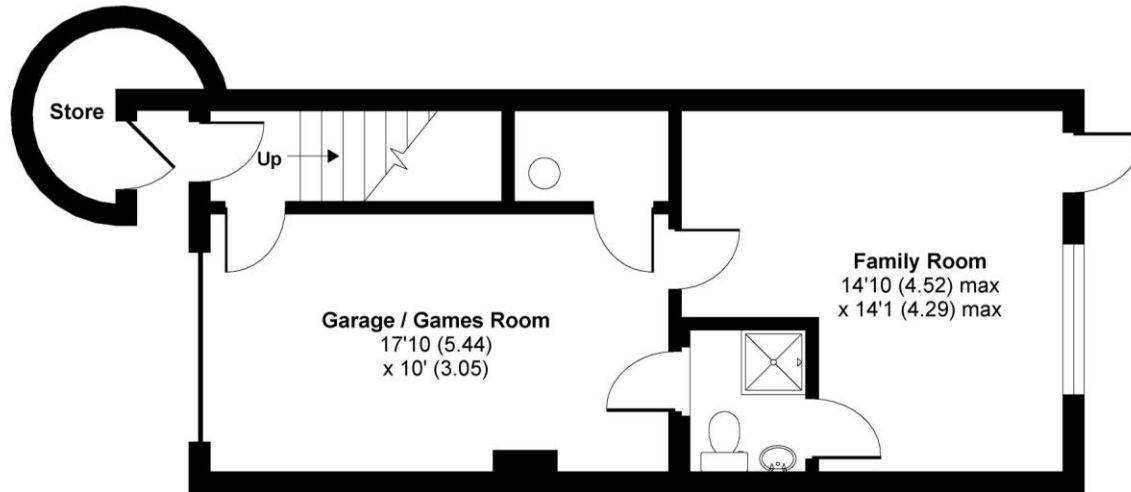


Local Authority: Rother District Council. Council Tax Band D. 100% Council Tax premium applies to second homes
Mains electricity, water and drainage. Heating: Geo thermal space heating
Predicted mobile phone coverage: EE, Vodafone and 02
Broadband speed: Ultrafast 1000Mbps available. Source Ofcom
Flood risk summary: Very low risk. Source GOV.UK
Service Charge: Currently about £77 per month
Heating Charge: Currently about £58 per month

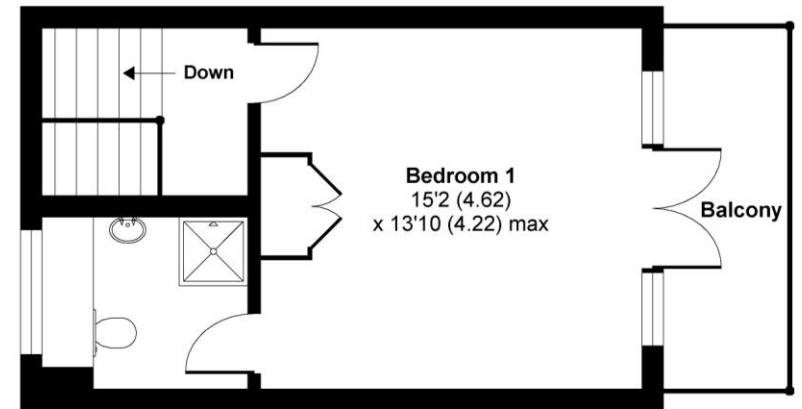
APPROX. GROSS INTERNAL FLOOR AREA 1313 SQ FT 122 SQ METRES (EXCLUDES STORE)



FIRST FLOOR



GROUND FLOOR



SECOND FLOOR

Whilst every attempt has been made to ensure the accuracy of the floor plan contained here, measurements of doors, windows and rooms are approximate and no responsibility is taken for any error, omission or misstatement. These plans are for representation purposes only as defined by RICS Code of Measuring Practice and should be used as such by any prospective purchaser. Specifically no guarantee is given on the total square footage of the property if quoted on this plan. Any figure given is for initial guidance only and should not be relied on as a basis of valuation.

PHILLIPS & STUBBS



Viewing Arrangements : Strictly by appointment with Phillips & Stubbs

Important Notice:

Phillips & Stubbs, their clients and any joint agents give notice that:

1. They are not authorised to make or give any representations or warranties in relation to the property either here or elsewhere, either on our own behalf or on behalf of their clients or otherwise. They assume no responsibility for any statement that may be made in these particulars. These particulars do not form part of any offer or contract and must not be relied upon as statements or representations of fact.
2. These particulars have been provided in good faith and, whilst we endeavour to make them accurate and reliable, if there are any points of particular importance to you please contact our office and we will make further enquiries on your behalf. Any areas, measurements or distances are approximate. The text, photographs and plans are for guidance only and are not necessarily comprehensive. It should not be assumed that the property has all necessary planning, building regulation or other consents regarding alterations. Phillips and Stubbs have not tested any services, equipment or facilities. Purchasers must satisfy themselves by inspection or otherwise. All contents, fixtures, fittings and electrical appliances are expressly excluded from the sale unless specifically mentioned in the text of the sales particulars. A wide angle lens has been used in the photography.



47-49 Cinque Ports Street, Rye, East Sussex TN31 7AN
Mayfair Office, 15 Thayer Street, London W1U 3JT

01797 227338
0870 1127099

rye@phillipsandstubbs.co.uk
mayfair@phillipsandstubbs.co.uk

www.phillipsandstubbs.co.uk