

18/20 STAMFORD STREET STALYBRIDGE CHESHIRE TEL: 0161 338 2292

Website: www.wcdawson.com Email: reception@wcdawson.com



Green Lane, Hollingworth, Hyde, SK14 8HS

Dawsons are pleased to present this stunning two bedroom stone end of terraced property. Located in the sought after village of Hollingworth, refurbished to a high standard throughout. This stylish home blends traditional charm with modern living, perfect for first time buyers or downsizing. Parking to the front of the property, Shared communal garden to the rear. NO VENDOR CHAIN.

The property boasts of bright and spacious living areas featuring contemporary finishes and natural décor. Viewings highly recommended.

Asking Price £190,000

Green Lane, Hollingworth, Hyde, SK14 8HS

- Stone built cottage
- Recently refurbished
- New kitchen & bathroom
- Desirable location
- Close to countryside walks
- Parking to front
- Loft room
- Viewing highly recommended
- Communal garden to rear

GROUND FLOOR

Living room

13.5 x 13.6 (3.96m.1.52m x 3.96m.1.83m)
uPVC double glazed composite style security door, uPVC double glazed window, feature fireplace, central heating radiator

Kitchen

10.7 x 13.5 (3.05m.2.13m x 3.96m.1.52m)
uPVC windows, central heating radiator, access to storage understairs, stainless steel sink with mixer tap, Boiler. Built in electric hob with overhead extractor fan, space for automatic washing machine.

Hallway

6.8ft x 34ft (1.83m.2.44mft x 10.36mft)
Doors leading to..

Downstairs wc

6.8ft x 2.8ft (1.83m.2.44mft x 0.61m.2.44mft)
White hand wash basin and toilet, uPVC double glazed window

FIRST FLOOR

Bedroom One

13.6 x 13.8 (3.96m.1.83m x 3.96m.2.44m)
uPVC double glazed window, central heating radiator, built in wardrobe, feature fireplace.

Bedroom Two

10.7 x 7.6 (3.05m.2.13m x 2.13m.1.83m)
uPvc double glazed window, central heating radiator

Bathroom

7.8 x 8.6 (2.13m.2.44m x 2.44m.1.83m)
Fitted contemporary white suite having panel bath with shower over, wash hand basin with vanity storage unit below, WC, part tiled, uPVC double glazing, central heating radiator, stairs leading to loft room

SECOND FLOOR

Loft Room

14.5 x 11.6 (4.27m.1.52m x 3.35m.1.83m)
uPVC Velux window

EXTERNAL

Parking to the front of the property,
Shared communal garden to the rear

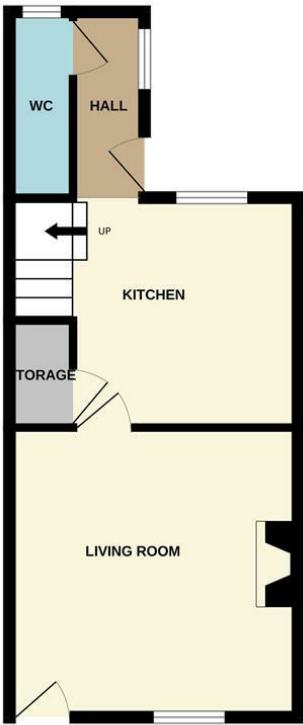


Directions

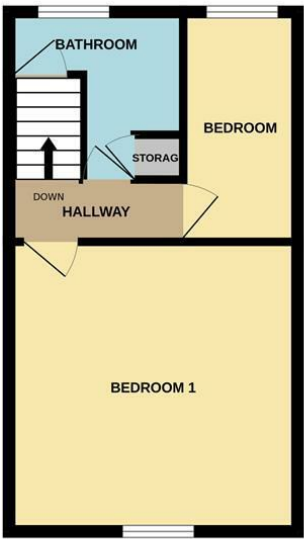


Floor Plan

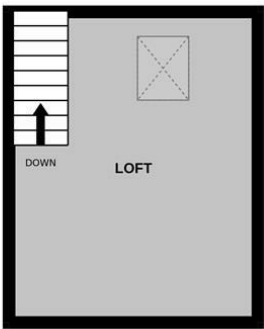
GROUND FLOOR



1ST FLOOR



2ND FLOOR



Whilst every attempt has been made to ensure the accuracy of the floorplan contained here, measurements of doors, windows, rooms and any other items are approximate and no responsibility is taken for any error, omission or mis-statement. This plan is for illustrative purposes only and should be used as such by any prospective purchaser. The services, systems and appliances shown have not been tested and no guarantee as to their operability or efficiency can be given.
Made with Metropix ©2025

These particulars, whilst believed to be accurate are set out as a general outline only for guidance and do not constitute any part of an offer or contract. Intending purchasers should not rely on them as statements of representation of fact, but must satisfy themselves by inspection or otherwise as to their accuracy. No person in this firms employment has the authority to make or give any representation or warranty in respect of the property.

