

18/20 STAMFORD STREET STALYBRIDGE CHESHIRE TEL: 0161 338 2292

Website: www.wcdawson.com Email: reception@wcdawson.com



Littlefields, Mottram, SK14 6TA

Superbly presented, three bedroom, link detached property comes onto the market with NO VENDOR CHAIN and in excellent decorative order throughout and enjoys a good sized garden plot with driveway providing off road parking and an attached brick built garage. Having been maintained to a particularly high standard the property is, in our opinion, ideally suited to a growing family and is situated in a popular and convenient location with good access to all amenities.

The property is well placed for those looking for good commuter links. Local junior and high schools are also readily accessible and there are numerous countryside walks on the doorstep.

Offers Over £277,950

Littlefields, Mottram, SK14 6TA

- 3 Bedroom Link Detached Property
 - Ready to Move into Accommodation
 - Excellent Commuter Links
 - Internal Inspection Highly Recommended
- Lawned Front Garden and Timber Decked/Gravelled Landscaped Rear Garden
 - Popular and Established Residential Location
 - En-suite to Master Bedroom
- Good Sized Attached Brick Built Garage
 - Ideally Suited for a Growing Family
 - Good Sized Living Room

Contd.....

The Accommodation briefly comprises:

Entrance Porch, good sized Living Room with box bow window, Dining Area with French doors onto the rear garden, fitted Kitchen with integrated appliances

To the first floor there are 3 Bedrooms (Master having En-suite Shower Room), Family Bathroom/WC with white suite

Externally the front garden is laid to lawn with border plants and shrubs. There is a driveway providing off road parking and leads to the attached brick built garage. The larger than average rear garden plot is decked with gravel sections and includes a summer house with power points.

There is a path that extends to the left-hand gable elevation.

The Accommodation in Detail:

Entrance Porch

uPVC double glazed front door

Living Room

14'9 x 14'2 maximum (4.50m x 4.32m maximum)
(including understairs storage cupboard),
uPVC double glazed box bow window, central heating radiator

Dining Area

9'11 x 7'2 (3.02m x 2.18m)
uPVC double glazed French doors onto the rear garden, central heating radiator

Kitchen

10'3 x 7'4 (3.12m x 2.24m)
Single drainer stainless steel sink unit, range of wall and floor mounted units, built-in oven, four ring ceramic hob with filter unit over, part tiled, uPVC double glazed window

First Floor:

Landing

Bulk-head storage cupboard, loft access, uPVC double glazed window

Bedroom (1)

12'2 x 8'4 (3.71m x 2.54m)
uPVC double glazed window, central heating radiator

En-suite

White suite having shower cubicle, wash hand basin with vanity storage unit below, low level WC, part tiled, uPVC double glazed window

Bedroom (2)

9'6 x 8'4 (2.90m x 2.54m)
uPVC double glazed window, central heating radiator

Bedroom (3)

8'1 x 6'1 (2.46m x 1.85m)
uPVC double glazed window, central heating radiator

Bathroom/WC

6'0 x 5'5 (1.83m x 1.65m)
White suite, panel bath, pedestal wash hand basin, low level WC, fully tiled, uPVC double glazed window, recessed spotlights, contemporary central heating radiator

Externally:

The front garden is laid to lawn with border plants and shrubs.

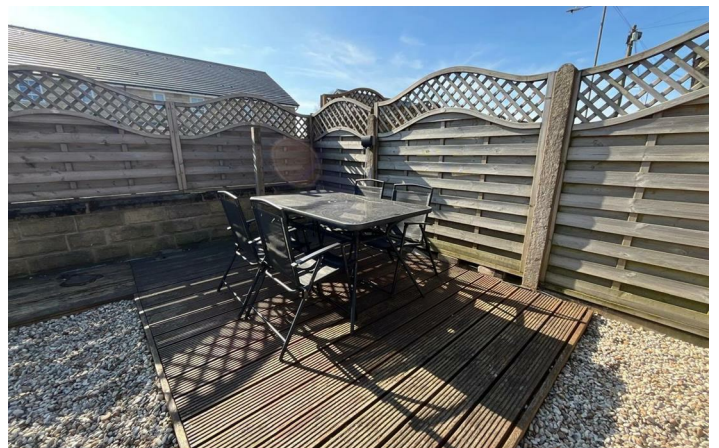
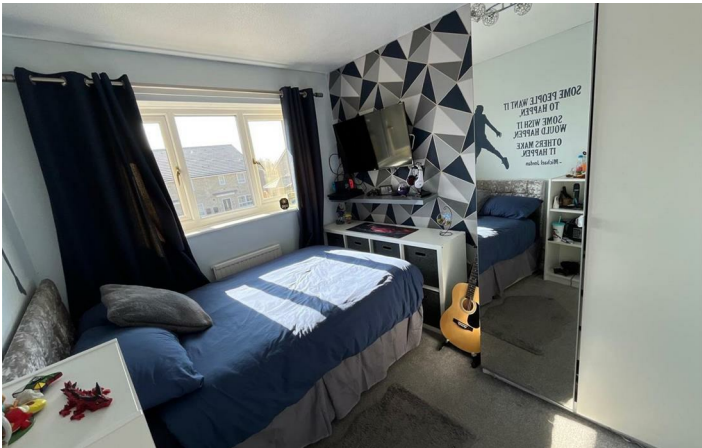
There is a driveway providing off road parking and this leads to an attached brick built garage (16'11 x 8'2) with up and over door, PVC rear personnel door, plumbed for automatic washing machine and dryer, power and lighting and outside tap.

The rear garden is low maintenance with a good sized timber deck section with gravel areas. Within the rear garden there is a good sized Summer House with electricity supply.

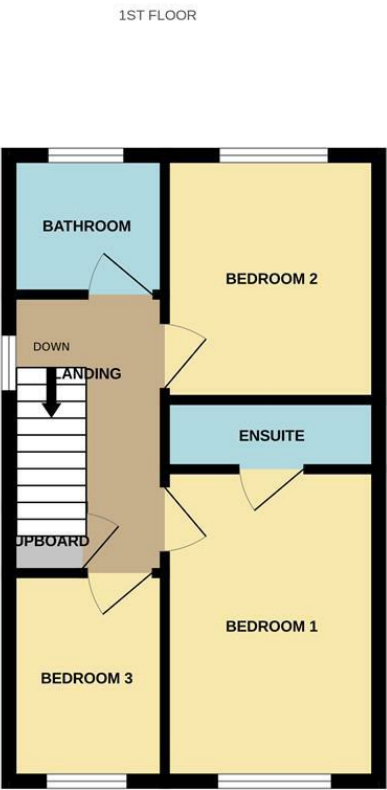
There are external power sockets within the rear garden.



Directions



Floor Plan



Whilst every attempt has been made to ensure the accuracy of the floorplan contained here, measurements of doors, windows, rooms and any other items are approximate and no responsibility is taken for any error, omission or mis-statement. This plan is for illustrative purposes only and should be used as such by any prospective purchaser. The services, systems and appliances shown have not been tested and no guarantee as to their operability or efficiency can be given.
Made with Metropix ©2025

These particulars, whilst believed to be accurate are set out as a general outline only for guidance and do not constitute any part of an offer or contract. Intending purchasers should not rely on them as statements of representation of fact, but must satisfy themselves by inspection or otherwise as to their accuracy. No person in this firms employment has the authority to make or give any representation or warranty in respect of the property.

