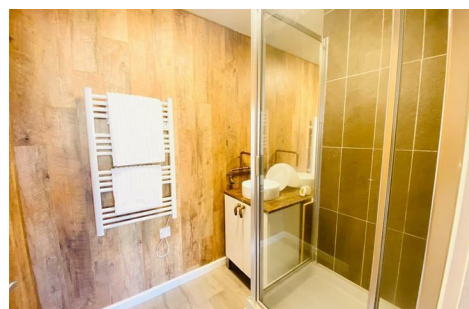


18/20 STAMFORD STREET STALYBRIDGE CHESHIRE TEL: 0161 338 2292

Website: www.wcdawson.com Email: reception@wcdawson.com



The Thistle House, Bramble Court, Millbrook, Stalybridge, SK15 3BG

CASH BUYERS ONLY* - Dawsons are delighted to welcome onto the market this well-positioned, second floor apartment situated in the sought-after Bramble Court development. The property is offered to the market with NO FORWARD VENDOR CHAIN.

The property is by all accounts "Move In Ready". As you enter the apartment, you are welcomed by a larger than average entrance hall which leads to two double bedrooms, bathroom suite, en-suite to the main bedroom and open-plan living/kitchen dining room. The property is ideally situated and is close to a range of local amenities.

Viewing is highly recommended to fully appreciate what this well-positioned apartment has to offer.

* THE PROPERTY IS NOT MORTGAGEABLE DUE TO AN ISSUE WITH THE CULVERT

Offers Over £95,000

The Thistle House, Bramble Court, Millbrook, Stalybridge, SK15 3BG

- Cash Buyers Only
- No Chain
- Fantastic Investment Opportunity
- Close To Local Amenities
- Modern Complex
- uPVC Double-Glazing

Communal Entrance

Entrance Hall

8'6" x 8'10" (2.6 x 2.7)

Bright vibrant entrance hall which comprises of wood effect laminate flooring, smoke alarm, integrated storage which houses the electrics.

Open Plan Living/Kitchen Diner

13'9" x 19'4" (4.2 x 5.9)

Stunning modern living/kitchen diner which comprises of fitted wall and base units with worktops over, under unit lighting, breakfast bar, built in oven and hob with extractor fan, inset sink and drainer with mixer tap, tiled splashbacks, multi power points, laminate flooring, uPVC double glazed windows and electric heater.

Bedroom 1 (Double)

9'6" x 9'10" (2.9 x 3.0)

Laminate flooring, uPVC double-glazing, multi power points, electric heater.

En-suite

5'10" x 5'2" (1.8 x 1.6)

Stylishly presented modern en-suite comprising enclosed shower cubicle, vanity wash hand basin with copper tap, wood effect panelling, designer radiator, laminate flooring, extractor fan.

Bedroom 2 (Double)

7'10" x 9'10" (2.4 x 3.0)

Wood effect laminate flooring, multi power points, uPVC double-glazing, electric heater.

Bathroom

8'2" x 4'11" (2.5 x 1.5)

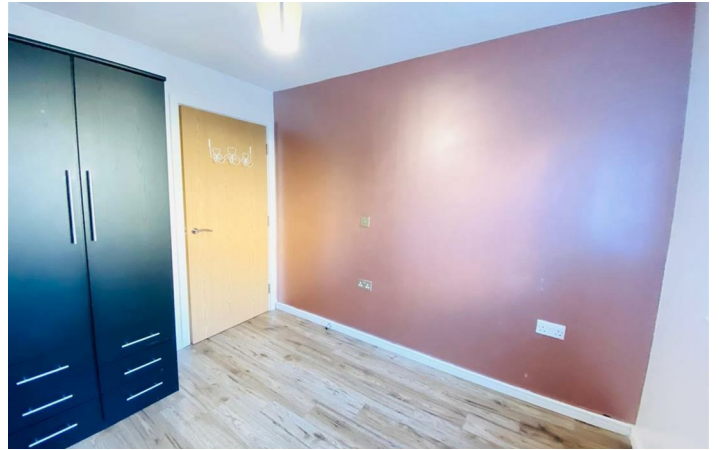
White three piece suite comprising of a panelled bath, pedestal wash hand basin and low level WC, tiled effect vinyl flooring, extractor fan, fitted radiator.

Externally

Communal gardens. Allocated parking space.



Directions



Floor Plan

GROUND FLOOR



Whilst every attempt has been made to ensure the accuracy of the floorplan contained here, measurements of doors, windows, rooms and any other items are approximate and no responsibility is taken for any error, omission or mis-statement. This plan is for illustrative purposes only and should be used as such by any prospective purchaser. The services, systems and appliances shown have not been tested and no guarantee as to their operability or efficiency can be given.
Made with Metropix ©2025

These particulars, whilst believed to be accurate are set out as a general outline only for guidance and do not constitute any part of an offer or contract. Intending purchasers should not rely on them as statements of representation of fact, but must satisfy themselves by inspection or otherwise as to their accuracy. No person in this firms employment has the authority to make or give any representation or warranty in respect of the property.

