



AB Properties



87 Gair Crescent
, Carlisle, ML8 4BX

Offers over £89,995



87 Gair Crescent

, Carluke, ML8 4BX

Well presented two bedroom terraced villa situated within a popular residential area in Carluke.

The property boasts generous accommodation arranged over two levels with the ground floor comprising of a welcoming entrance vestibule, a lounge with patio doors to the rear garden, and an open plan dining kitchen with a feature open staircase to the upper level.

Upstairs offers a spacious landing, a four-piece bathroom with shower over a jacuzzi bath, and two double bedrooms with fitted wardrobes.

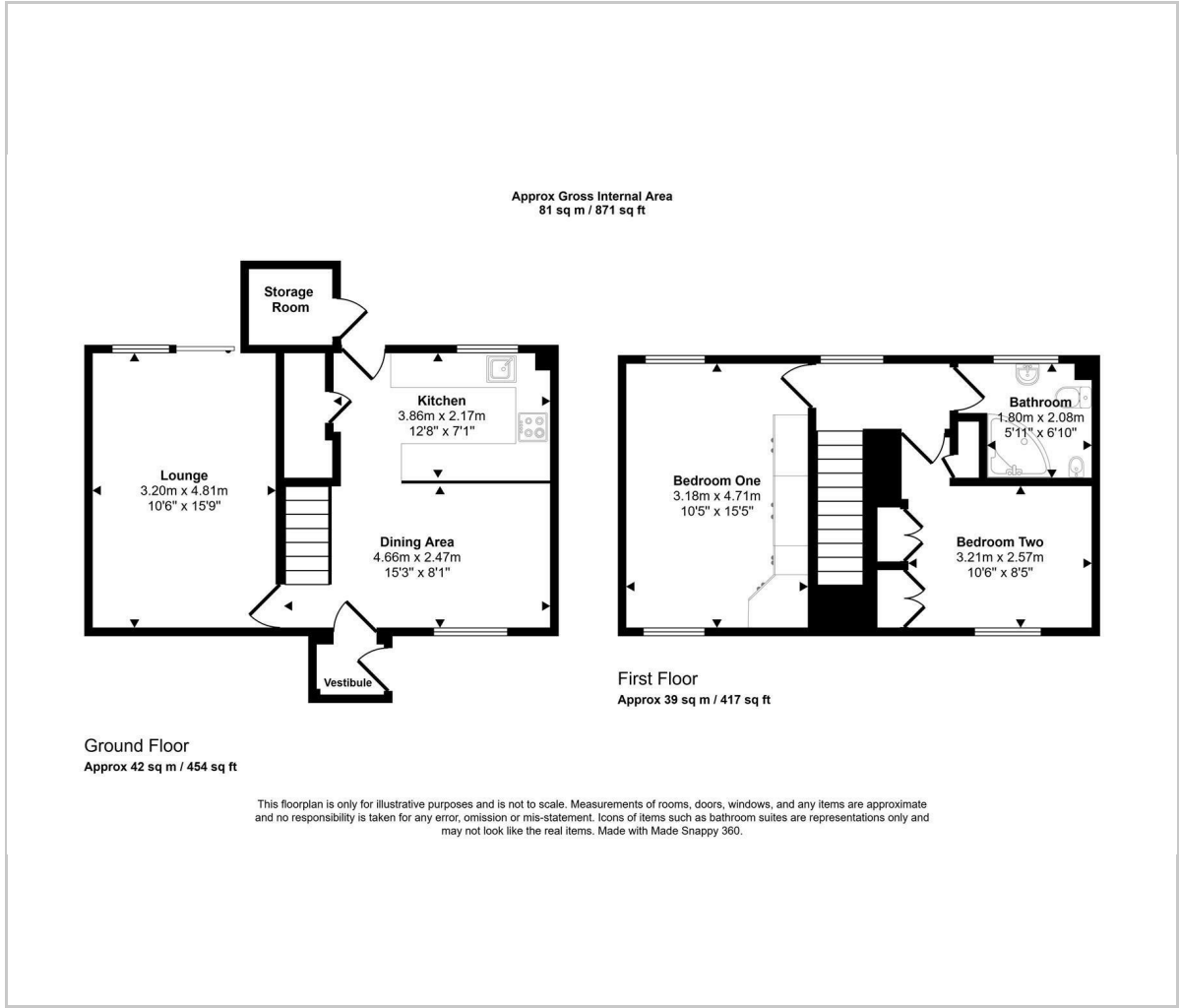
Additionally the property benefits from gas central heating, double glazing and ample storage facilities.

Externally there is a monoblocked garden to the front of the property and a private rear garden to the rear which comprises of paving and decking. There is ample on-street parking and a residents carpark to the rear.

Carluke is a popular commuter town with excellent schools, shopping and recreational facilities, parks, and walkways. The property sits only a short walk from Carluke Train Station where trains run regularly direct to Glasgow and Edinburgh. The nearby M74 and M8 give access to Glasgow and The West.





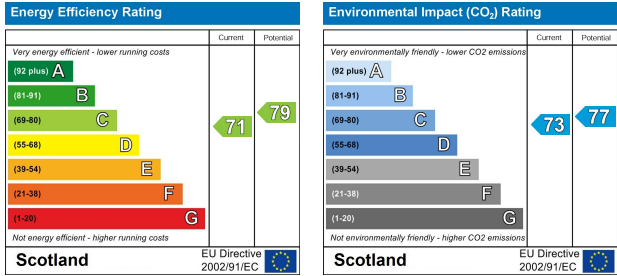


Viewing

Please contact our AB Properties Office on 01555 660077 if you wish to arrange a viewing appointment for this property or require further information.



Energy Efficiency Graph



These particulars, whilst believed to be accurate are set out as a general outline only for guidance and do not constitute any part of an offer or contract. Intending purchasers should not rely on them as statements of representation of fact, but must satisfy themselves by inspection or otherwise as to their accuracy. No person in this firms employment has the authority to make or give any representation or warranty in respect of the property.

19 Bannatyne Street, Lanark, Lanarkshire, ML11 7JR
Tel: 01555 660077 Email: admin@ab-properties.co.uk ab-properties.co.uk