



104A High Street
, Lanark, ML11 7ES

Fixed Price £69,995

104A High Street

, Lanark, ML11 7ES

** HOME REPORT - £80,000 **

Traditional, two bedroom upper flat situated in the heart of the historic market town of Lanark.

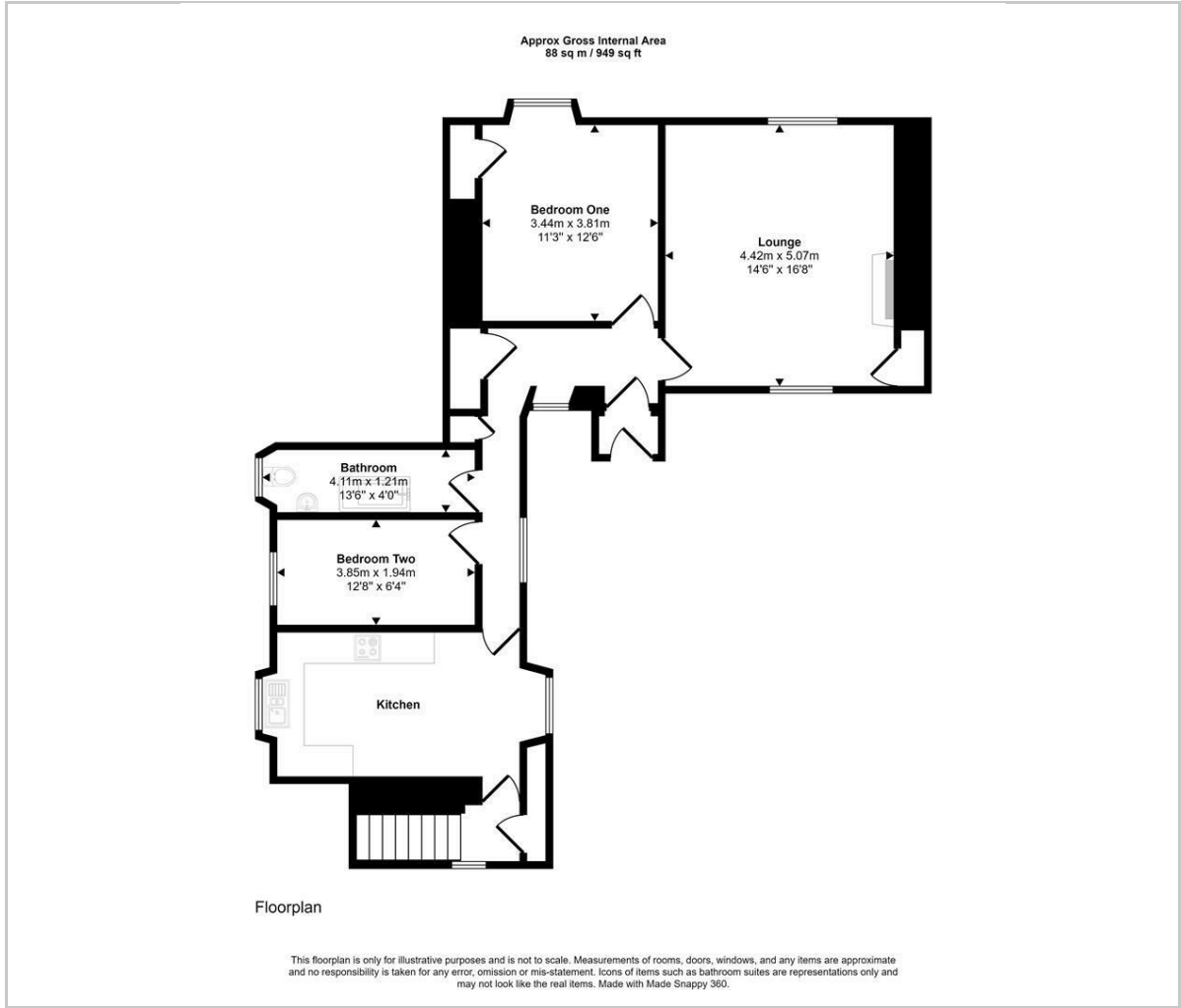
The property is entered via a communal door to the rear which leads to a private front door entrance. The accommodation comprises of a welcoming entrance hallway, a bright and spacious lounge, a large dining kitchen, a bathroom with shower over the bath and two generously sized bedrooms. Bedroom one has the added luxury of fitted storage.

Further benefits include gas central heating and single glazed windows.

The property sits in the heart of Lanark, The Royal Burgh is steeped in history and has all the required facilities and amenities, including Tesco, Morrisons and Lidl, a wide range of local shops, retail park, health centre, modern grammar school, modern primary schools, historic 18 hole golf course, leisure centre with swimming pool, bowling club, tennis club and Lanark Loch. Good access to the Scottish Borders and the Clyde valley, providing excellent walks for the outdoor enthusiast including Tinto Hill and the Falls of Clyde at New Lanark, a world heritage site.

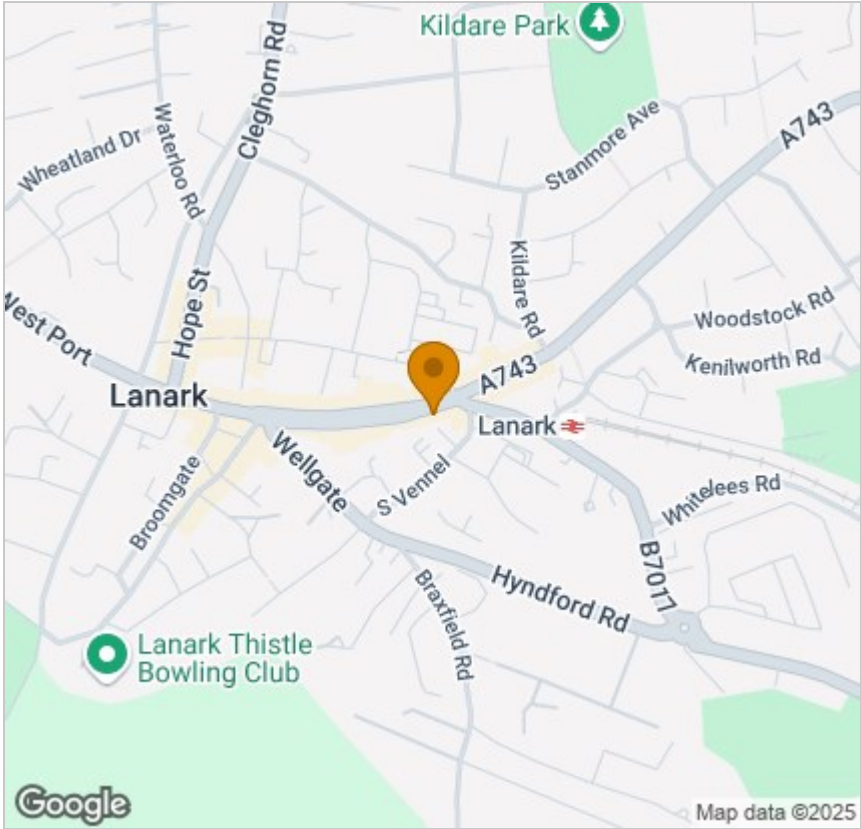




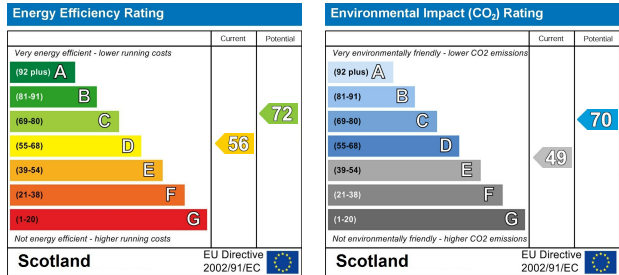


Viewing

Please contact our AB Properties Office on 01555 660077 if you wish to arrange a viewing appointment for this property or require further information.



Energy Efficiency Graph



These particulars, whilst believed to be accurate are set out as a general outline only for guidance and do not constitute any part of an offer or contract. Intending purchasers should not rely on them as statements of representation of fact, but must satisfy themselves by inspection or otherwise as to their accuracy. No person in this firm's employment has the authority to make or give any representation or warranty in respect of the property.

19 Bannatyne Street, Lanark, Lanarkshire, ML11 7JR
Tel: 01555 660077 Email: admin@ab-properties.co.uk ab-properties.co.uk