



43 Symington Street
, Leadhills, ML12 6YE

Offers over £169,500





AB Properties are pleased to present this charming extended three bedroom end terraced cottage, dating back to 1750. Nestled in the historic, picturesque village of Leadhills and positioned on a desirable corner plot, this property offers breath taking views of the surrounding rolling hills.

Inside, you will find a welcoming entrance hallway, a sleek shower room, a bright lounge, and a large kitchen/diner. The ground floor features two double bedrooms, one currently used as an office, while a spacious third double bedroom occupies the first floor. Additional highlights include a newly refurbished oil-fired central heating system, double glazed windows, and a fully floored attic for storage, accessed via a fitted loft ladder.

Kitchen/Diner

Upon entering, you're greeted with a modern dining kitchen equipped with top-of-the-line appliances. Patio doors open to the patio area, showcasing the views along the valley. The kitchen is well equipped with a range of wall and base units, ceramic hob, double electric oven/ microwave, extractor hood, and space for a dishwasher and large fridge freezer. There is also ample space for an eight-seater dining table giving a super, sociable space.

Living Room

The living room provides a comfortable space for relaxation.

Shower Room

The sleek three piece shower room is generously sized and fitted with a new heated towel rail.

Bedroom 1

Currently used as an office space this large room offers a versatile living area.

Bedroom 2

Situated on the first floor, this generous sized room benefits from storage space not shown on the plans.

Bedroom 3

The third bedroom easily fits a double bed plus furniture.



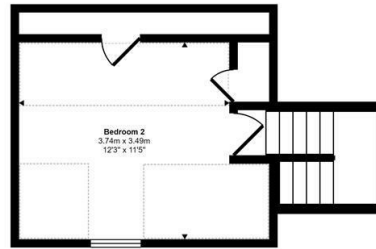
Approx Gross Internal Area
91 sq m / 979 sq ft



Ground Floor
Approx 70 sq m / 751 sq ft

Denotes head height below 1.5m

This floorplan is only for illustrative purposes and is not to scale. Measurements of rooms, doors, windows, and any items are approximate and no responsibility is taken for any error, omission or mis-statement. Icons of items such as bathroom suites are representations only and may not look like the real items. Made with Made Snappy 360.



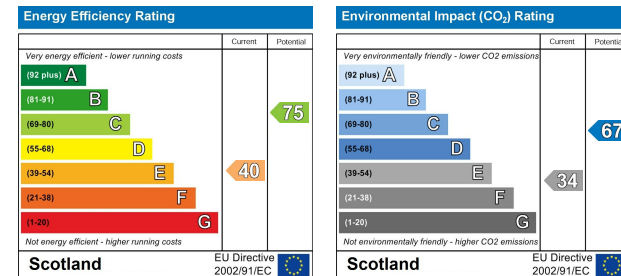
First Floor
Approx 21 sq m / 227 sq ft



Viewing

Please contact our AB Properties Office on 01555 660077 if you wish to arrange a viewing appointment for this property or require further information.

Energy Efficiency Graph



These particulars, whilst believed to be accurate are set out as a general outline only for guidance and do not constitute any part of an offer or contract. Intending purchasers should not rely on them as statements of representation of fact, but must satisfy themselves by inspection or otherwise as to their accuracy. No person in this firm's employment has the authority to make or give any representation or warranty in respect of the property.

19 Bannatyne Street, Lanark, Lanarkshire, ML11 7JR
Tel: 01555 660077 Email: admin@ab-properties.co.uk ab-properties.co.uk