

Old Christchurch Road, Bournemouth, Dorset,

BH1 1PH

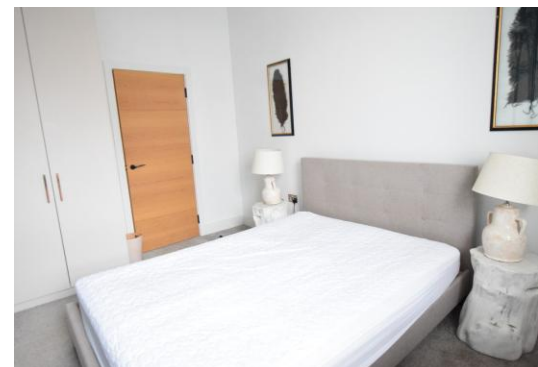
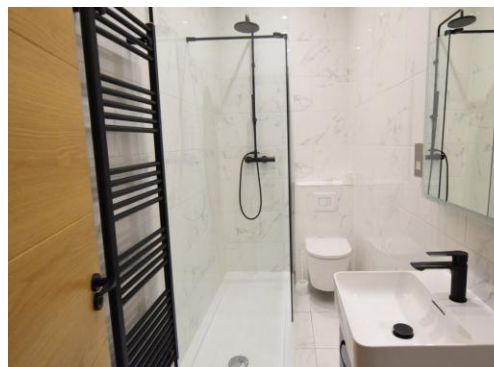
2 Bedrooms

house & son

www.houseandson.net

01202 242000

nick.b@houseandson.net



## Features:

TWO DOUBLE  
BEDROOMS

FULLY FURNISHED

RENT INCLUDES  
WATER & SEWERAGE  
RATES

MODERN  
THROUGHOUT

BRIGHT &  
SPACIOUS

GREAT LOCATION

## Description:

LANDSDOWNE – A FULLY FURNISHED two bedroom 1<sup>st</sup> floor apartment (no lift) located within walking distance of both the Town Centre and the CLIFF TOP. TWO DOUBLE BEDROOMS; open plan lounge/kitchen area (kitchen comes complete with INTEGRATED APPLIANCES); stylish shower room with basin and W/C. Property is MODERN THROUGHOUT, and the RENT INCLUDES WATER & SEWERAGE RATES. A BRIGHT & SPACIOUS apartment in a convenient and popular location. FULLY MANAGED. AVAILABLE 16/02/2026.

£1250 pcm

Available 16<sup>th</sup> February 2026