

Lansdowne House, Christchurch Road, Bournemouth,

BH1 3JP

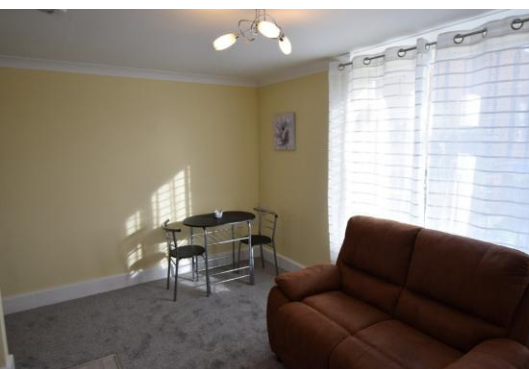
1 Bedroom

house & son

www.houseandson.net

01202 242000

nick.b@houseandson.net



Features:

ONE DOUBLE
BEDROOM

FULLY FURNISHED

RECENTLY
REFURBISHED

RENT INCLUDES
SEASONAL HEATING

RENT INCLUDES
WATER &
SEWERAGE RATES

RESIDENTS'
PARKING FACILITY

GREAT LOCATION

Description:

LANDSDOWNE – A FULLY FURNISHED one bedroom 2nd floor flat (LIFT) located in this popular block at the Lansdowne, close to both the CLIFF TOP and local amenities. ONE DOUBLE BEDROOM; recently fitted kitchen with electric oven/hob, washer dryer, fridge freezer, and microwave; bathroom with shower facility. RENT INCLUDES SEASONAL HEATING, CONSTANT HOT WATER and WATER & SEWERAGE RATES. Property has been RECENTLY REFURBISHED, and also benefits from a RESIDENTS' PARKING FACILITY. A smart looking apartment in this convenient location. FULLY MANAGED. AVAILABLE 27/10/2025.

£975 pcm

Available 27th October 2025