

Kerley Court, 3 Kerley Road, Bournemouth,

BH2 5DW

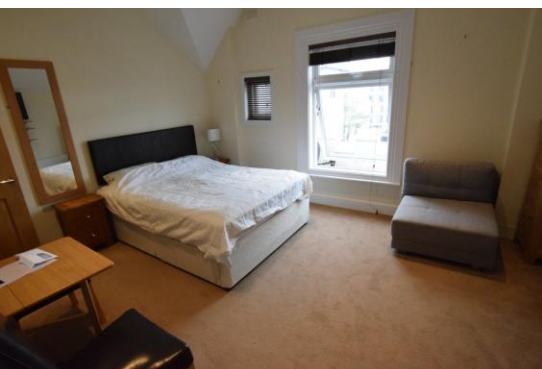
Studio Apartment

house & son

www.houseandson.net

01202 242000

nick.b@houseandson.net



### Features:

- STUDIO
- FULLY FURNISHED
- ALLOCATED PARKING SPACE
- GAS CENTRAL HEATING
- CLOSE TO SEA FRONT
- DISHWASHER

### Description:

WEST CLIFF – A FULLY FURNISHED STUDIO APARTMENT (2<sup>nd</sup> floor, no lift) located just a short walk from the SEA FRONT and close to both Bournemouth town centre and Westbourne. Large bedroom/lounge; kitchen with gas hob/electric oven, DISHWASHER, fridge freezer, and washing machine; bathroom with shower facility, basin, and W/C. Property also benefits from both GAS CENTRAL HEATING and an ALLOCATED PARKING SPACE. A smart apartment in a great location. FULLY MANAGED. AVAILABLE 25/07/2024.

£825 pcm

Available 25<sup>th</sup> July 2024