



SPENCER JAMES
RESIDENTIAL

8 Hartlepool Court | London E16 2RL
T: +44 (0) 20 7474 3636
E: mail@spencer-james.co.uk
www.spencer-james.co.uk



**** Three Double Bedrooms ****

**** Three Bathrooms ****

**** Secure Underground Parking ****

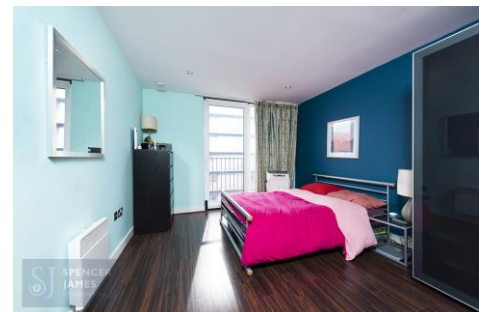
**** 24 Hour Concierge ****

**** Ample Storage ****

**** Large Balcony ****

**** Residents Gymnasium ****

**** Floor Area 1316 Sq/ft (122.4 Sq/M) ****



**Mamara Apartments, Royal Victoria, E16
(Leasehold)**

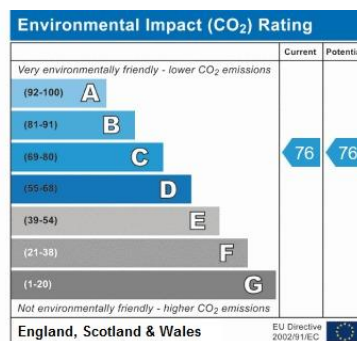
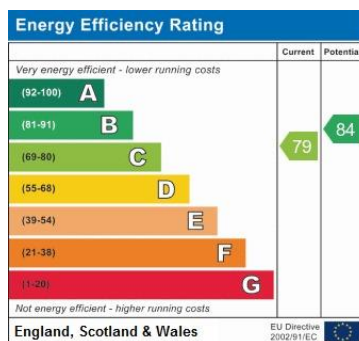
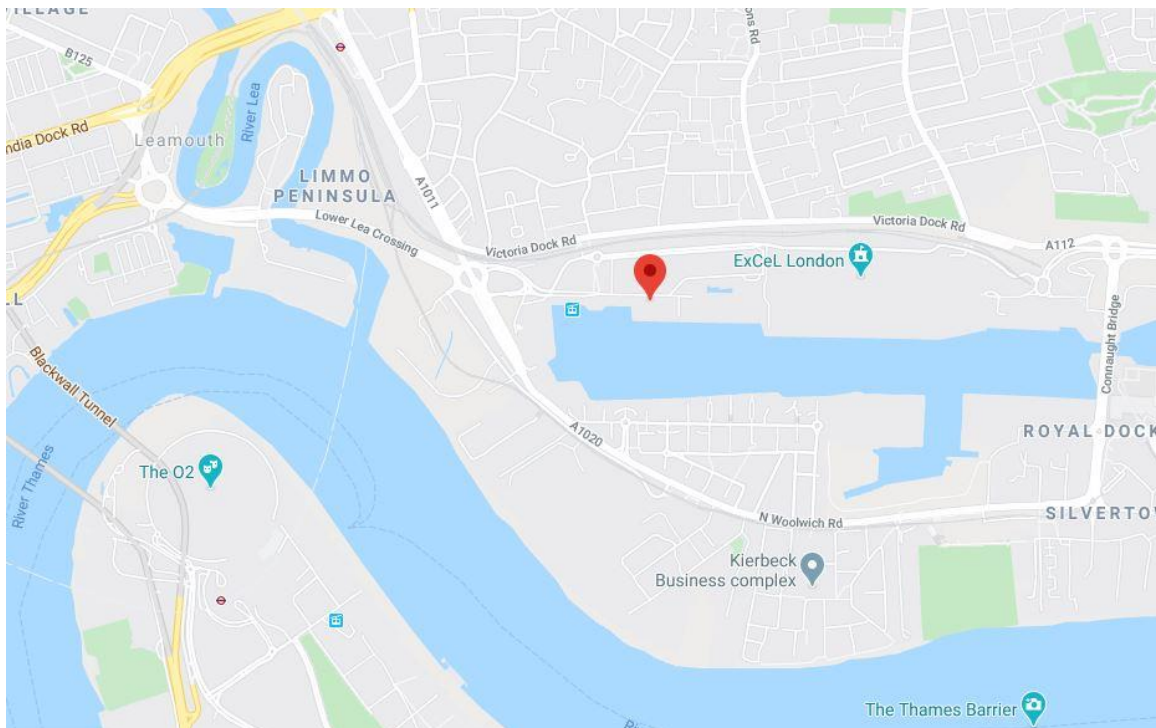
Monthly Rental Of £2,500

Located in the sought-after Capital East Development this expansive seventh floor apartment is arranged over 1300 sq/ft boasting ample living space throughout.

Internally the property comprises of three spacious double bedrooms with the master and second bedrooms benefiting from en-suite shower rooms, a further family bathroom, and an expansive open plan living room and kitchen with a large balcony offering partial dock views.

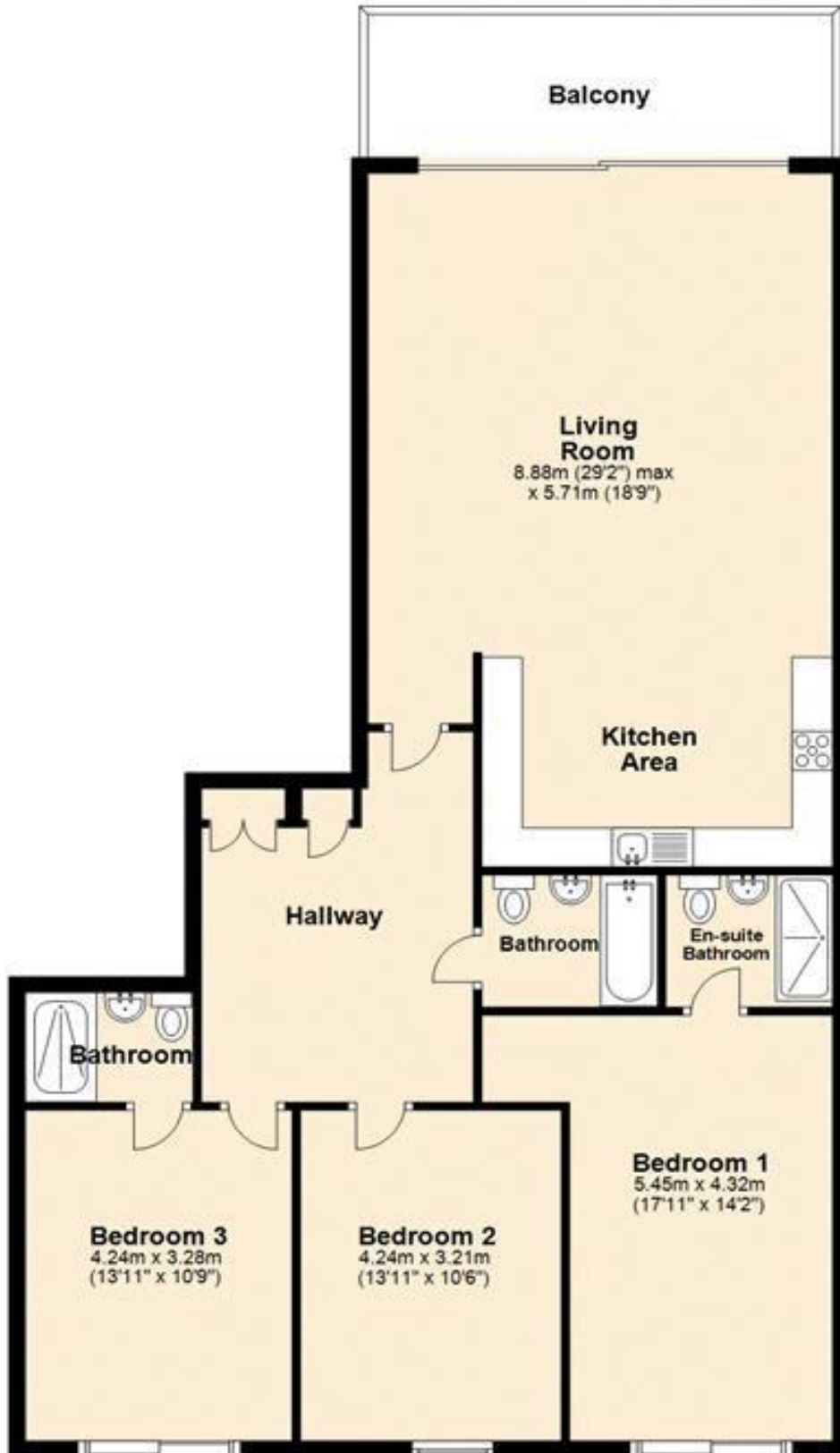
The popular development boasts a range of facilities including secure underground parking, 24-hour concierge, residents' gymnasium and well-maintained communal grounds.

Royal Victoria DLR is located within convenient walking distance in addition to various restaurants and amenities in the desirable neighborhood the development is situated in.



Seventh Floor

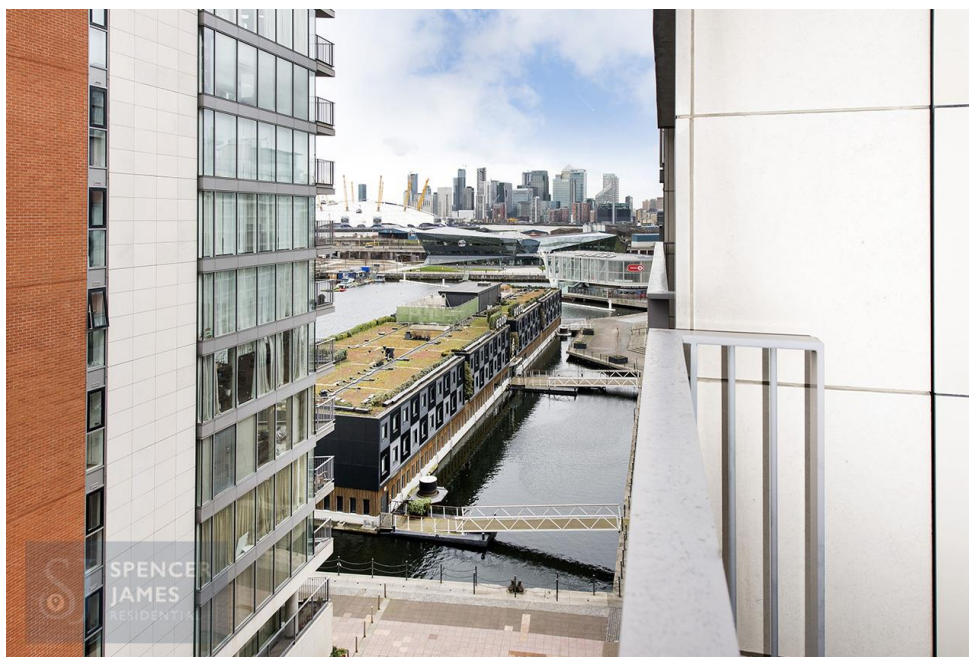
Approx. 122.3 sq. metres (1316.0 sq. feet)



Total area: approx. 122.3 sq. metres (1316.0 sq. feet)



SPENCER JAMES
RESIDENTIAL



Consumer Protection from Unfair Trading Regulations 2008 and the Business Protection from Misleading Marketing Regulations 2008: Every effort has been made to ensure that consumers and or businesses are treated fairly and provided with accurate material information as required by law. It must be noted however that the agent has not tested any apparatus, equipment, fixture, fittings or services and does not verify they are in working order, fit for their purpose, or within the ownership of the seller or landlord, therefore the buyer or tenant must assume the information given is incorrect. Neither has the agent checked the legal documentation to verify the legal status of the property. A buyer or tenant must assume information is incorrect until it has been verified by their own solicitors or other advisers. Nothing concerning the type of construction, condition of the structure or its surroundings is to be implied from any image of the property.