



Chalet Close

Berkhamsted, Hertfordshire HP4 3NR



Quietly exceptional, perfectly placed.

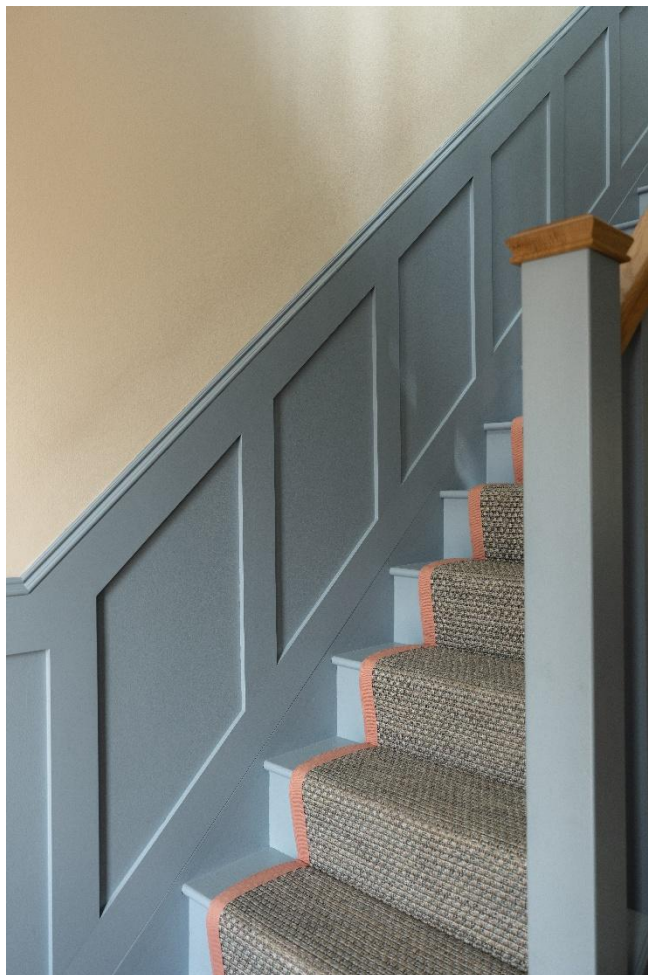
Discreetly positioned at the end of a little-known private enclave, just off prestigious Shootersway Lane, Cherry Tree House offers a masterfully composed balance of privacy and proximity.

Hidden in plain sight, this fine home occupies one of Berkhamsted's most desirable addresses: peaceful and private, yet within effortless reach of the town's cultural rhythm, acclaimed schooling and the mainline station.

Thoughtfully arranged across a generous footprint, the house unfolds with measured elegance and architectural clarity. The beautifully presented entrance hall sets a tone of quiet elegance and leads into a series of versatile reception spaces where flow and form are intuitively resolved. The expansive sitting room, anchored by a statement fireplace, opens to a large glazed conservatory, while more intimate zones - a family room, dedicated playroom and secluded study - offer zones for work, rest and play.

At the heart of the home, the kitchen/breakfast room pairs traditional cabinetry with tactile surfaces, striking a warm counterpoint to crisp architectural lines.

Guide price: £1,750,000
Tenure: Freehold



Bathed in natural light, it's a space as suited to family life as to quiet reflection. A separate utility room preserves the serenity of the main space, while a large glazed pocket door slides away to reveal a formal dining room, its sightlines drawn toward the garden, creating a seamless dialogue between inside and out.

Upstairs, the landing is generous and light-drenched, leading to four well-proportioned double bedrooms. The principal suite is a sanctuary of understated luxury, featuring a wall of wardrobes and a striking en suite, clad in woodland tiling - a tactile homage to the verdant surroundings. The guest bedroom benefits from its own en suite too, while the remaining rooms are served by a beautifully appointed family bathroom, this time finished in a statement Lily Pad tile; a design which is playful and poised in equal parts. All bathrooms were renovated last year, using high-quality designer fittings.

Externally, the house sits within a substantial, thoughtfully landscaped plot. East-west in orientation, it welcomes morning sun to the front and golden-hour light across the rear garden. Mature trees border the space, which backs directly onto playing fields, offering both a borrowed landscape and a rare sense of privacy. The garden curves gracefully around the house, with a broad patio, a covered veranda for sheltered evenings and playful, family-friendly features including a sunken trampoline, a treehouse and a summerhouse.

To the front, a long private driveway establishes a sense of arrival and separation from the outside world. A detached double garage and driveway parking for up to five cars complete the picture of quiet functionality.

Cherry Tree House is, quite simply, a considered exercise in Berkhamsted family living. Where architecture, atmosphere and intent coalesce into something quietly remarkable..



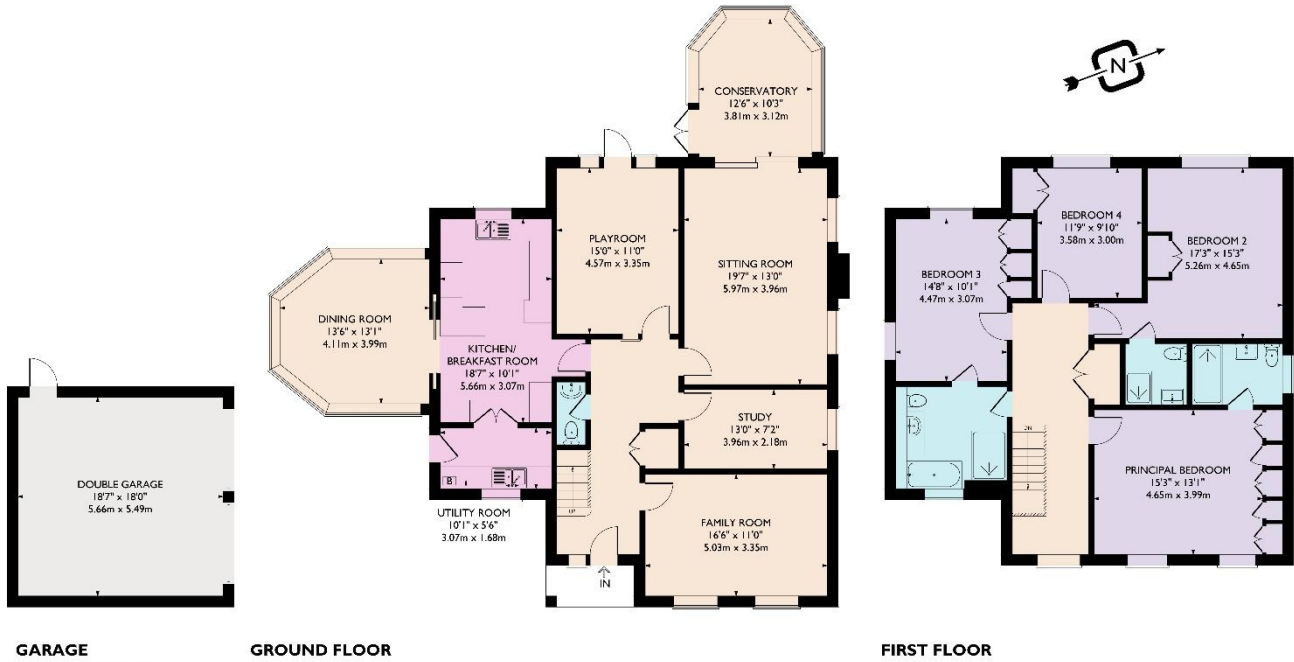
Every home tells a story

Whether your property has been interior designed, or crafted by family life over the years, our boutique estate agency sells beautiful, interesting homes and historic properties across Hertfordshire, Buckinghamshire and South Bedfordshire.

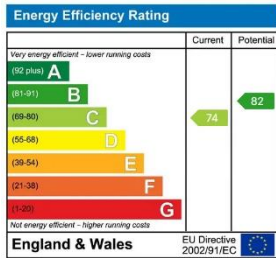
From idyllic cottages out in the country, to mid-century modern in the middle of town, we're proud to be part of bringing your home's story to life.



APPROXIMATE GROSS INTERNAL AREA = 2615 SQ FT / 243 SQ M
GARAGE = 335 SQ FT / 31 SQ M
TOTAL = 2950 SQ FT / 274 SQ M



*This plan is for layout guidance only. Drawn in accordance with RICS guidelines. Not drawn to scale unless stated. Windows & door openings are approximate. Whilst every care is taken in the preparation of this plan, please check all dimensions, shapes & compass bearings before making any decisions reliant upon them.



Council Tax Band: G

nashpartnership.co.uk

Berkhamsted Office | 01442 863000
152 High Street, Berkhamsted, Hertfordshire HP4 3AT

These particulars do not form an offer or contract, nor part of one. You should not rely on statements by Nash Property Management Ltd in the particulars or by word of mouth or in writing ("information") as being factually accurate about the property, its condition or its value. Neither Nash Property Management Ltd nor any joint agent has any authority to make any representations about the property, and accordingly any information given is entirely without responsibility on the part of the agents, seller(s) or lessor(s). Photographs, property videos and virtual tours show only certain parts of the property as they appeared at the time they were taken. Floorplans, areas, measurements and distances given are approximate only. The text, images and plans included within these particulars are protected by Copyright and must not be reproduced without our consent. Any reference to alterations to, or use of, any part of the property does not mean that any necessary planning, building regulations or other consent has been obtained. A buyer or lessee must find out by inspection or in other ways that these matters have been properly dealt with and that all information is correct. Nash Partnership is a trading name of Nash Property Management Ltd, a private limited company registered in England & Wales with number 4876274. Registered Office: 152 High Street, Berkhamsted, Hertfordshire HP4 3AT.