

SHILLAN

RESIDENTIAL SALES & LETTINGS



45 Bashford Way, Worth, RH10 7YG

£365,000

A three bedroom family home situated in a quiet cut de sac location and convenient for local shops, schools and Three Bridges mainline train station. Accommodation comprises lounge, kitchen diner, bedrooms and family bathroom. Outside there are front and rear gardens and a garage en bloc. Other benefits include radiator heating and double glazing.

LOUNGE 14'8 x 14'7 (4.47m x 4.45m)

KITCHEN DINER 14'8 x 9'7 (4.47m x 2.92m)

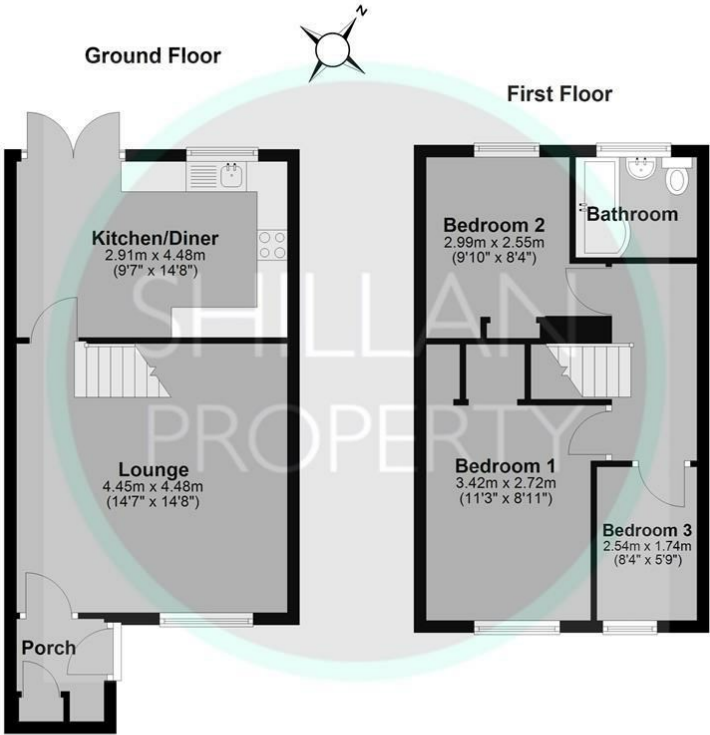
BEDROOM ONE 11'3 x 8'11 (3.43m x 2.72m)

BEDROOM TWO 9'10 x 8'4 (3.00m x 2.54m)

BEDROOM THREE 8'4 x 5'9 (2.54m x 1.75m)

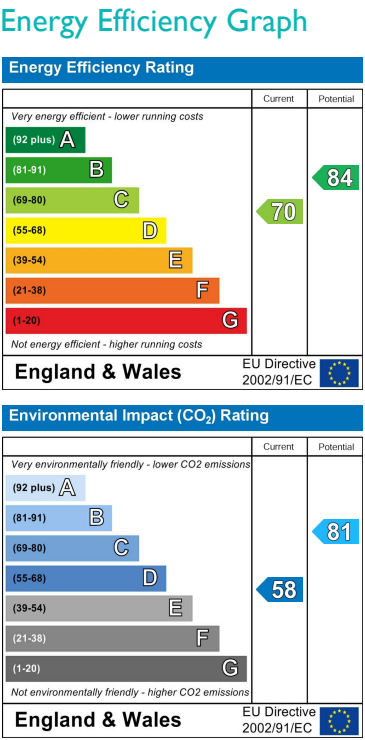
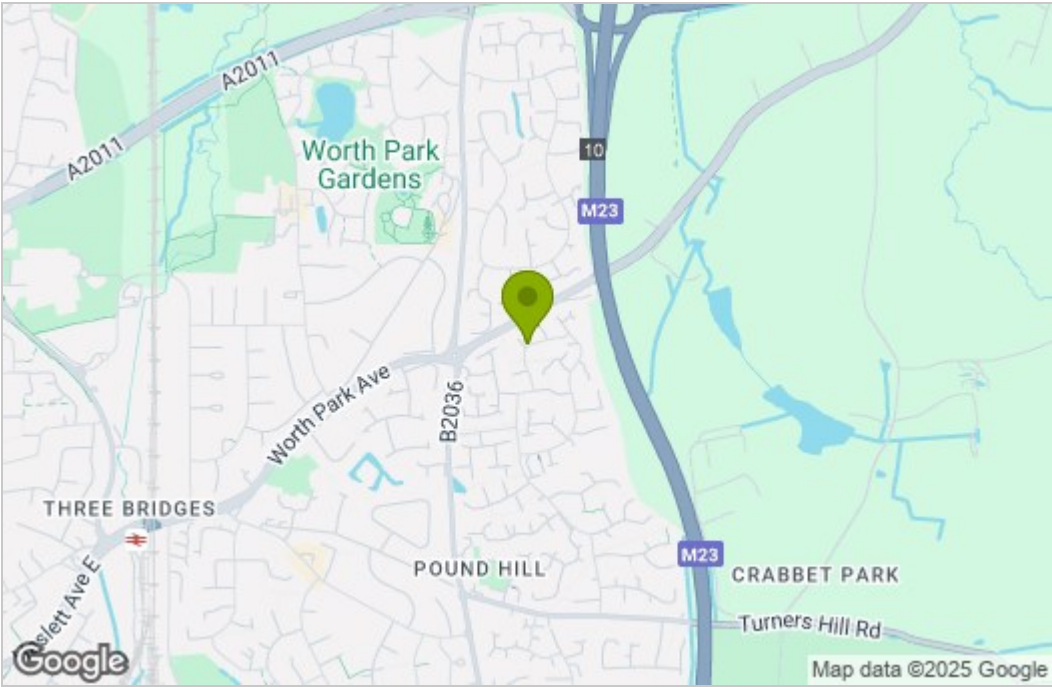
BATHROOM

Floor Plan



Total area: approx. 70.7 sq. metres (760.8 sq. feet)
These images are for representational purposes only. Drawn by Brian Blunden.
Plan produced using PlanUp.

Area Map



These particulars, whilst believed to be accurate are set out as a general outline only for guidance and do not constitute any part of an offer or contract. Intending purchasers should not rely on them as statements of representation of fact, but must satisfy themselves by inspection or otherwise as to their accuracy. No person in this firms employment has the authority to make or give any representation or warranty in respect of the property.