



The Old School House Ifield Green, Crawley, RH11 0BP

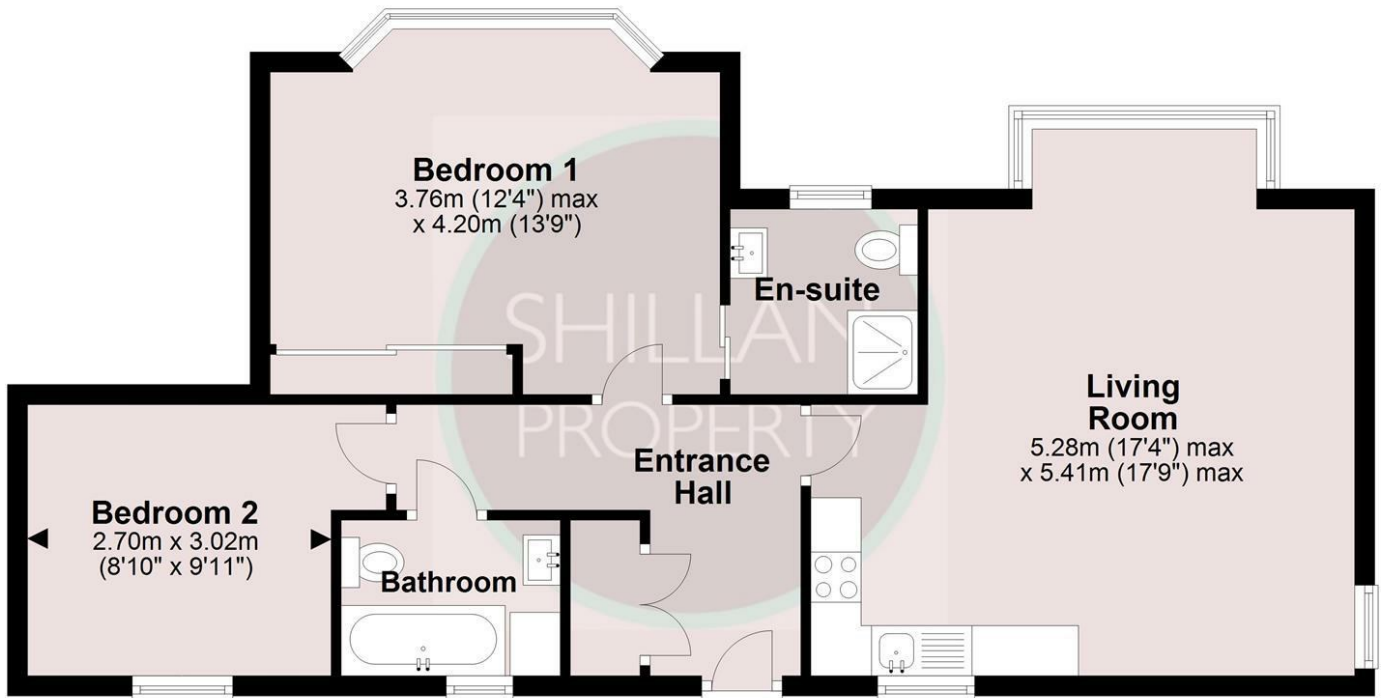
Offers in excess of £275,000

GUIDE PRICE £275,000 - £300,000. A beautiful purpose built two bedroom apartment situated in the attractive Ifield Green area of Crawley. It has a spacious feel with bay windows to the front, there is an en suite shower room to the master bedroom as well as family bathroom. It has its own entrance door to the rear of the block and two allocated parking spaces. NO CHAIN

Floor Plan

First Floor

Approx. 62.9 sq. metres (676.8 sq. feet)



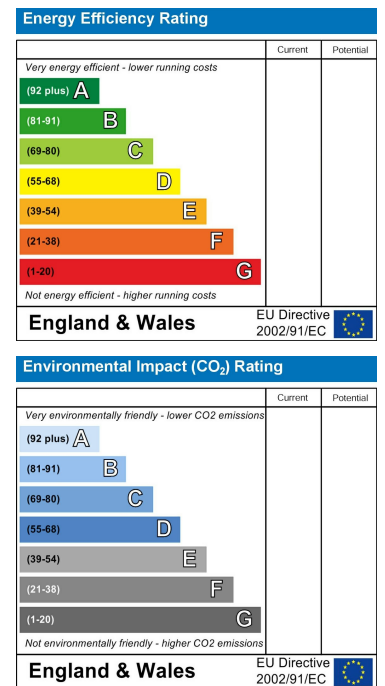
Total area: approx. 62.9 sq. metres (676.8 sq. feet)

These drawings are for representational purposes only. Drawn by Brian Blunden.
Plan produced using PlanUp.

Area Map



Energy Efficiency Graph



These particulars, whilst believed to be accurate are set out as a general outline only for guidance and do not constitute any part of an offer or contract. Intending purchasers should not rely on them as statements of representation of fact, but must satisfy themselves by inspection or otherwise as to their accuracy. No person in this firm's employment has the authority to make or give any representation or warranty in respect of the property.

1 Shire Parade The Ridings, Crawley, West Sussex, RH10 7XR

Tel: 01293 888700 Email: info@shillanproperty.com www.shillanproperty.com