



## Cassia Point, Glasshouse Gardens, Stratford, E20

Asking price **£470,000** | Leasehold



# Cassia Point, Glasshouse Gardens, Stratford, E20



1 Bedroom



1 Bathroom



1 Reception



Balcony



24-Hour Concierge



Gymnasium



Cycle Storage



Landscaped Gardens



0.4 MI Stratford Station

This spacious one-bedroom apartment with a balcony is set in the sought-after Glasshouse Gardens, a striking development overlooking the Olympic legacy landmarks at Queen Elizabeth Olympic Park in Stratford. The property comprises a bright open-plan kitchen/living area, an ample-sized bedroom with a built-in wardrobe, and a fully fitted modern bathroom.

Features include underfloor heating, floor-to-ceiling glazing, sleek bespoke kitchen cabinetry and high-quality bathroom tiling and ware. The development facilities include concierge services, access to an

onsite gym and secure bicycle storage.

Glasshouse Gardens comprises two buildings set in a landscaped and quiet, but still very convenient location within the modern Stratford town. A stroll away is Westfield Stratford City shopping mall, one of the largest retail districts in London. Glasshouse towers offer great views of the Aquatics Centre, the Arcelor Mittal Orbit and the London Stadium. The development was completed in 2017 by Lendlease and was designed by the award-winning Allies and Morrison Architects.

**Tenure:** Leasehold (990 years remaining)

**Local Authority:** Newham

**Ground Rent:** £350 p.a.

**Council Tax Band:** C

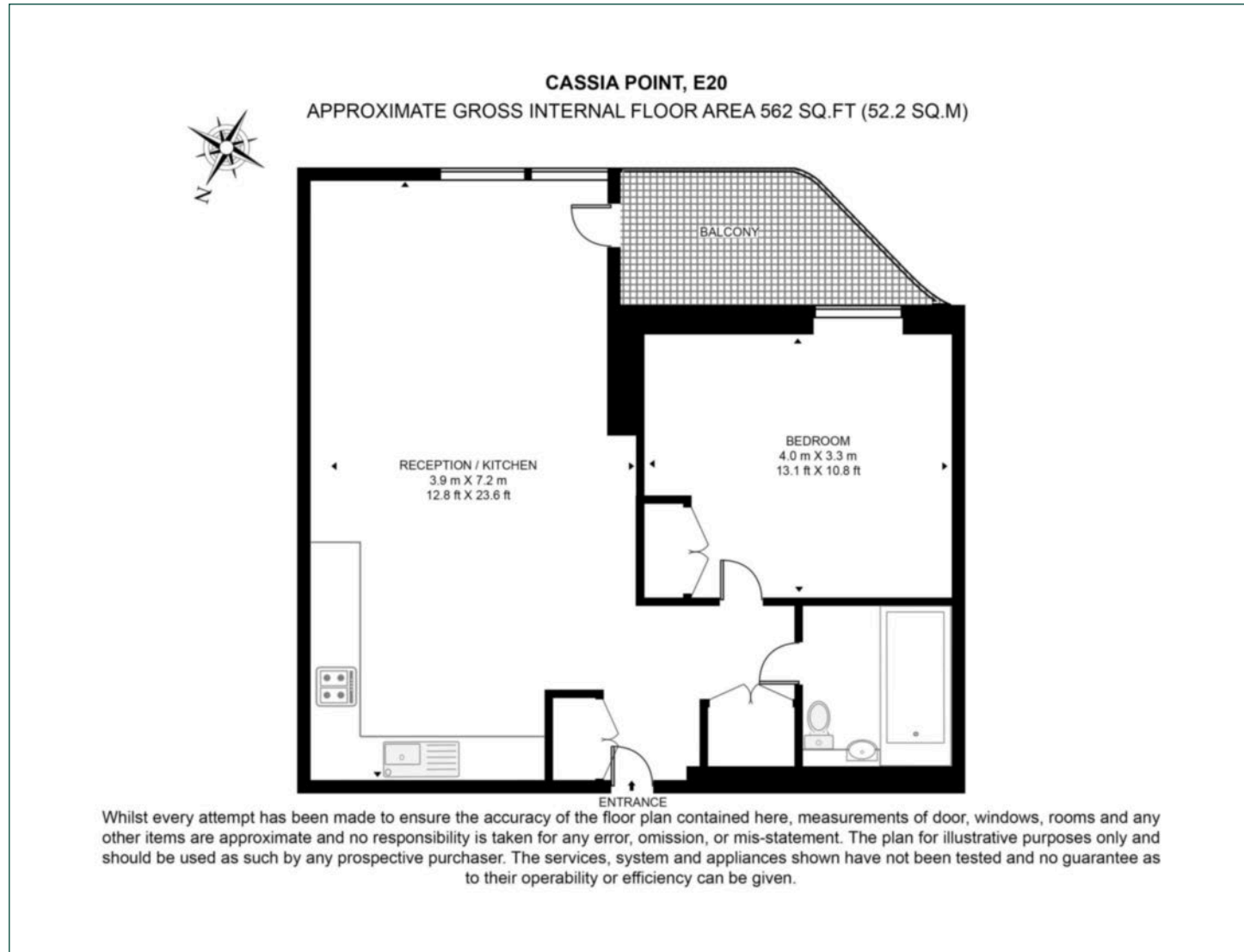
**Service Charge:** Approx. £2,805.70 p.a.

**EPC:** B



# Floorplan

562 sq ft | 52.2 sq m



## Canary Wharf

Horizon Building, 15 Hertsmere Road, London, E14 4AW

## Sales

020 7515 1001 | [canarywharf.sales@chaseevans.com](mailto:canarywharf.sales@chaseevans.com)

## We're here to help.

IMPORTANT NOTICE - These particulars have been prepared in good faith and they are not intended to constitute part of an offer or contract. We have not performed a structural survey on this property and the services, appliances and specific fittings have not been tested. All photographs, measurements, floor plans and distances referred to are given as a guide and should not be relied upon.

[chaseevans.com](http://chaseevans.com)

 Chase Evans