



Skinner Court, Barry Blandford Way, Bow, E3

Price **£500 per week** | Furnished



Skinner Court, Barry Blandford Way, Bow, E3



2 Bedrooms



1 Bathroom



1 Reception



Balcony



Secure Underground Parking



Local Amenities



0.1 MI Devons Road

Spacious & bright two bedroom apartment set within this secure residential development Ideally located moments away from Canary Wharf as well as being close to Langdon Park and Devons Road DLR stations. This part-furnished property comprises open-plan living area, large private balcony, fully integrated kitchen, two sizable bedrooms and pristine shower room.

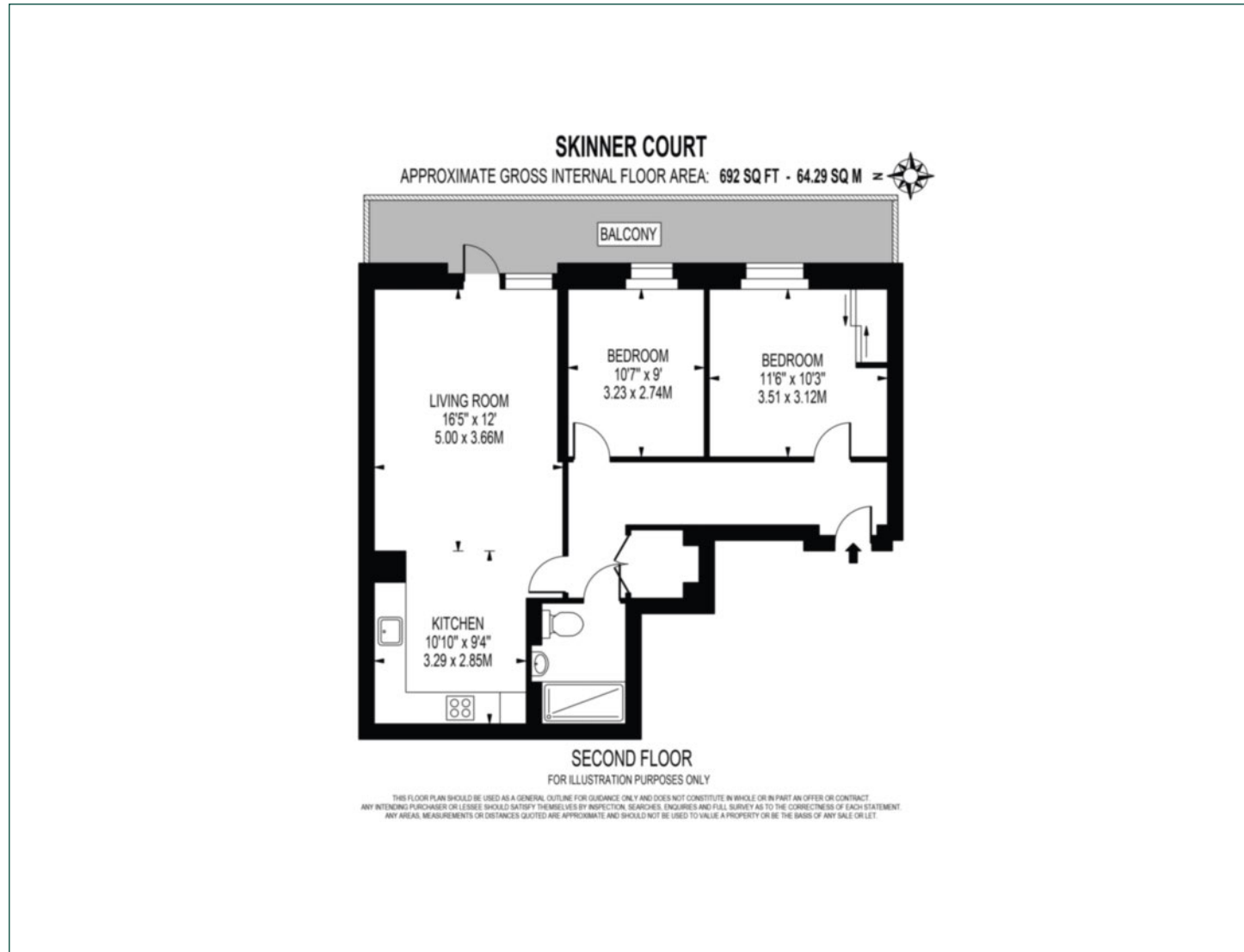
Residents benefit from secure underground parking. Superb local amenities to be opened in Lime Quarter square right next to Devons Road DLR station. Banks of Limehouse Cut, Columbia

Road Flower Market, Local Parks such as Victoria Park or Olympic Park, trendy areas such as Mile End, Hackney Wick or London Fields are within walking distance with all their bars and restaurants.

Local Authority:	Newham London
Council Tax Band:	D
EPC:	B
Security deposit:	equivalent to 5 weeks' rent

Floorplan

692 sq ft | 64.29 sq m



Canary Wharf

Horizon Building, 15 Hertsmere Road, London, E14 4AW

Lettings

020 7515 1000 | canarywharf.lettings@chaseevans.com

We're here to help.

IMPORTANT NOTICE - These particulars have been prepared in good faith and they are not intended to constitute part of an offer or contract. We have not performed a structural survey on this property and the services, appliances and specific fittings have not been tested. All photographs, measurements, floor plans and distances referred to are given as a guide and should not be relied upon.

chaseevans.com