

Park View Court, Devons Road, Bow, E3

Asking price **£450,000** | Leasehold



Park View Court, Devons Road, Bow, E3



2 Bedrooms



2 Bathrooms



1 Reception



Balcony



Nearby Parks



Local Amenities



0.3 MI Devons Road

A large two bedroom, two bathroom apartment with a balcony and park views set in a modern development located close to local amenities and good transport links. Features include a living room with wood flooring, a private balcony facing Furze Green open space, an open plan kitchen and dining area, both bedrooms are double in size with the master bedroom having an integrated wardrobe and en suite shower room. Family bathroom with contemporary fittings.

The development is located 0.3 miles from Devons Road DLR station and 0.7 miles from Bromley-By-

Bow Underground which provide access to the Hammersmith & City, District and DLR services. Residents have access to versatile transport links for commutes to Canary Wharf in 16 mins, Moorgate in 23 mins and other key destinations across the Capital. Locally, there are numerous green spaces including Mile End Park and Bartlett Park.



Tenure: Leasehold (115 years remaining)

Local Authority: Tower Hamlets

Ground Rent: £350 p.a.

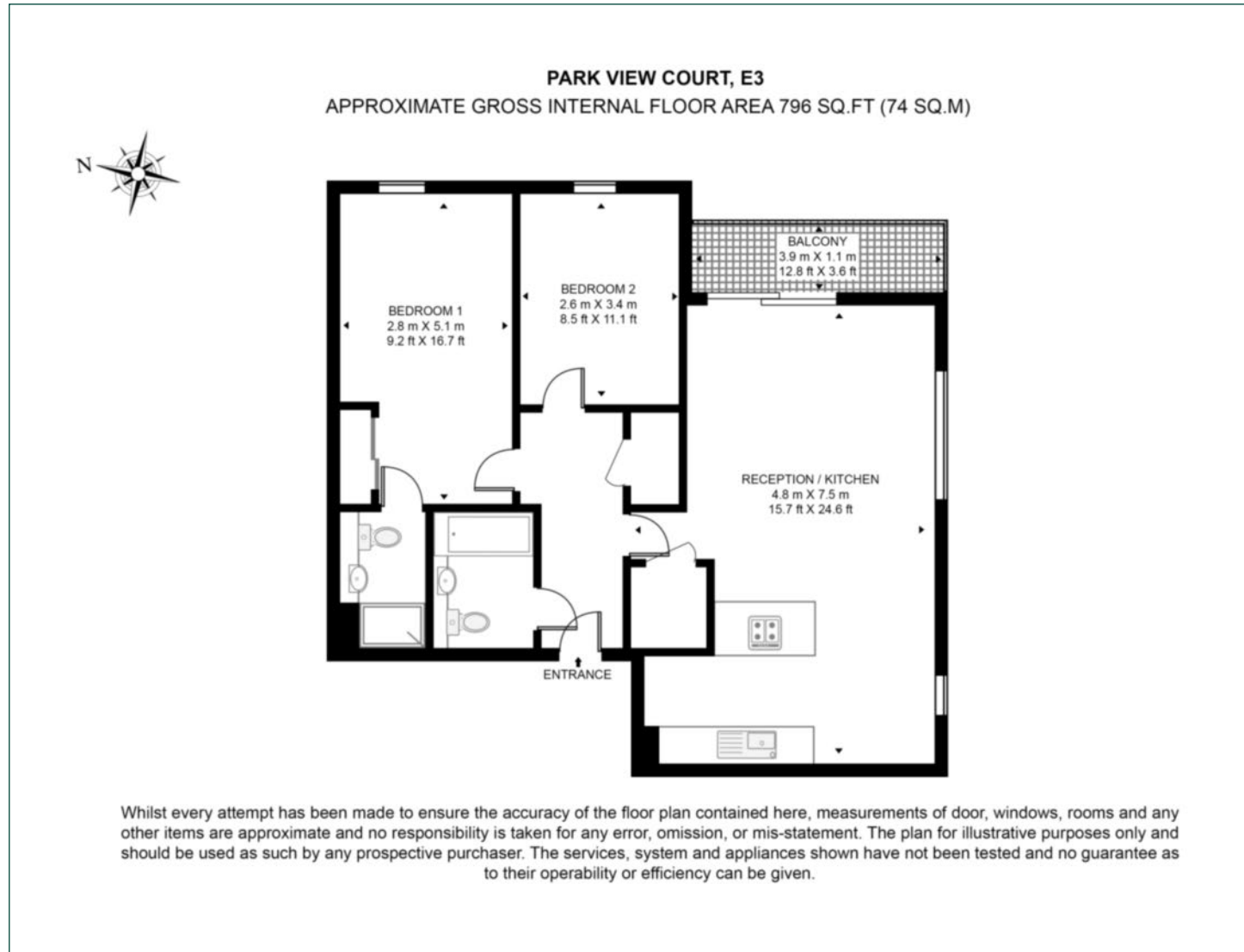
Council Tax Band: D

Service Charge: £2,800 p.a.

EPC: B

Floorplan

796 sq ft | 74 sq m



Canary Wharf

Horizon Building, 15 Hertsmere Road, London, E14 4AW

Sales

020 7515 1001 | canarywharf.sales@chaseevans.com

We're here to help.

IMPORTANT NOTICE - These particulars have been prepared in good faith and they are not intended to constitute part of an offer or contract. We have not performed a structural survey on this property and the services, appliances and specific fittings have not been tested. All photographs, measurements, floor plans and distances referred to are given as a guide and should not be relied upon.

chaseevans.com