

Stratosphere Tower, Great Eastern Road, Stratford, E15

Asking price **£475,000** | Leasehold



Stratosphere Tower, Great Eastern Road, Stratford, E15



1 Bedroom



1 Bathroom



1 Reception



Gymnasium



Communal Roof Terrace



24-Hour Concierge



0.1 MI Stratford

A well presented one bedroom apartment of approx. 567 sq ft arranged on the 20th floor of a popular development located in the heart of Stratford. Features include a bright living room with floor to ceiling glazing, wood flooring, an open plan kitchen with integrated appliances and ample storage. The bedroom is a good size with an integrated wardrobe and the bathroom has contemporary fittings.

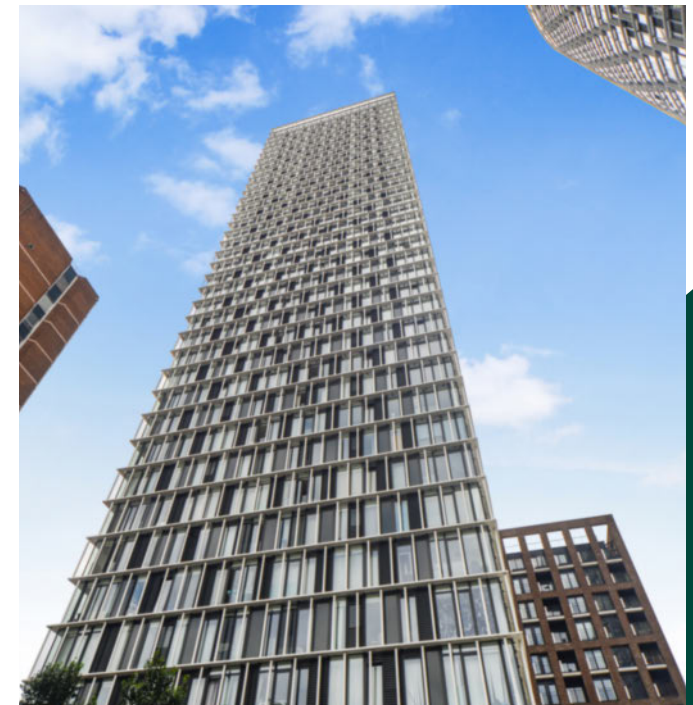
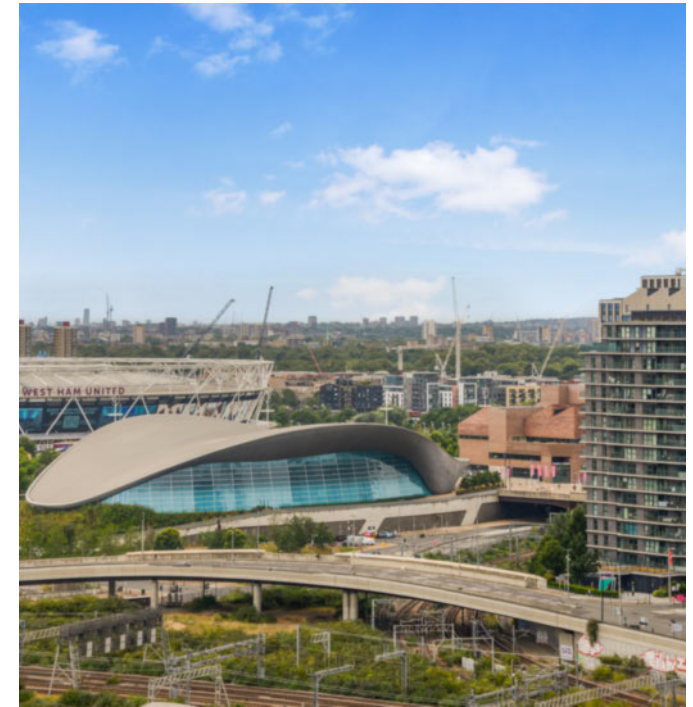
Residents have the benefit of 24-hour concierge, gym and a rooftop terrace and lounge. Stratosphere Tower is located approx 0.2 miles from

Westfield shopping centre with its excellent selection of eateries and shops and Stratford station for the Jubilee Line, DLR, Overground and Elizabeth lines.

Tenure: Leasehold (991 years remaining) **Local Authority:** Newham London

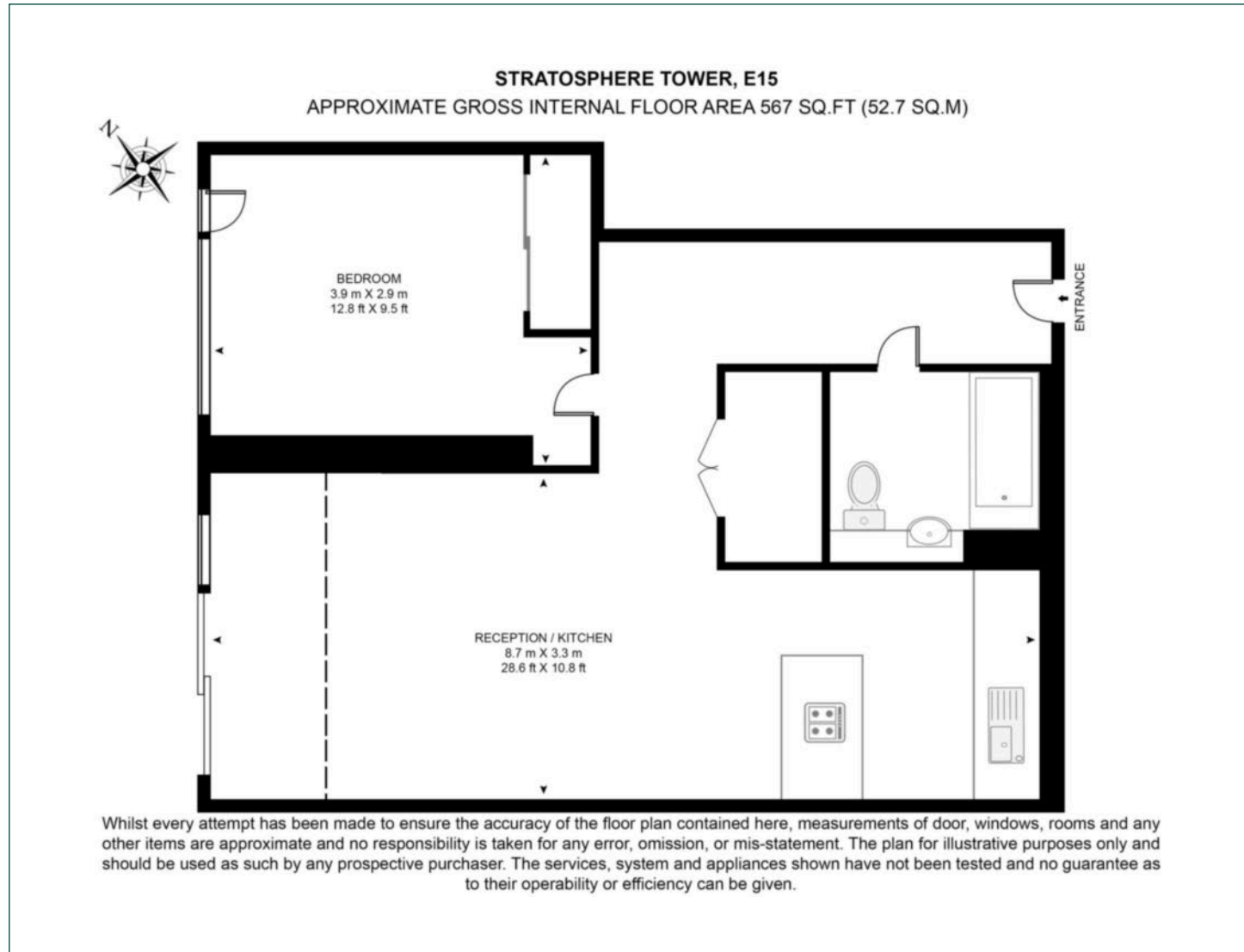
Ground Rent: £350 p.a. **Council Tax Band:** C

Service Charge: £2,843 p.a. **EPC:** B



Floorplan

567 sq ft



Canary Wharf

Horizon Building, 15 Hertsmere Road, London, E14 4AW

Sales

020 7515 1001 | canarywharf.sales@chaseevans.com

We're here to help.

IMPORTANT NOTICE - These particulars have been prepared in good faith and they are not intended to constitute part of an offer or contract. We have not performed a structural survey on this property and the services, appliances and specific fittings have not been tested. All photographs, measurements, floor plans and distances referred to are given as a guide and should not be relied upon.

chaseevans.com

 Chase Evans