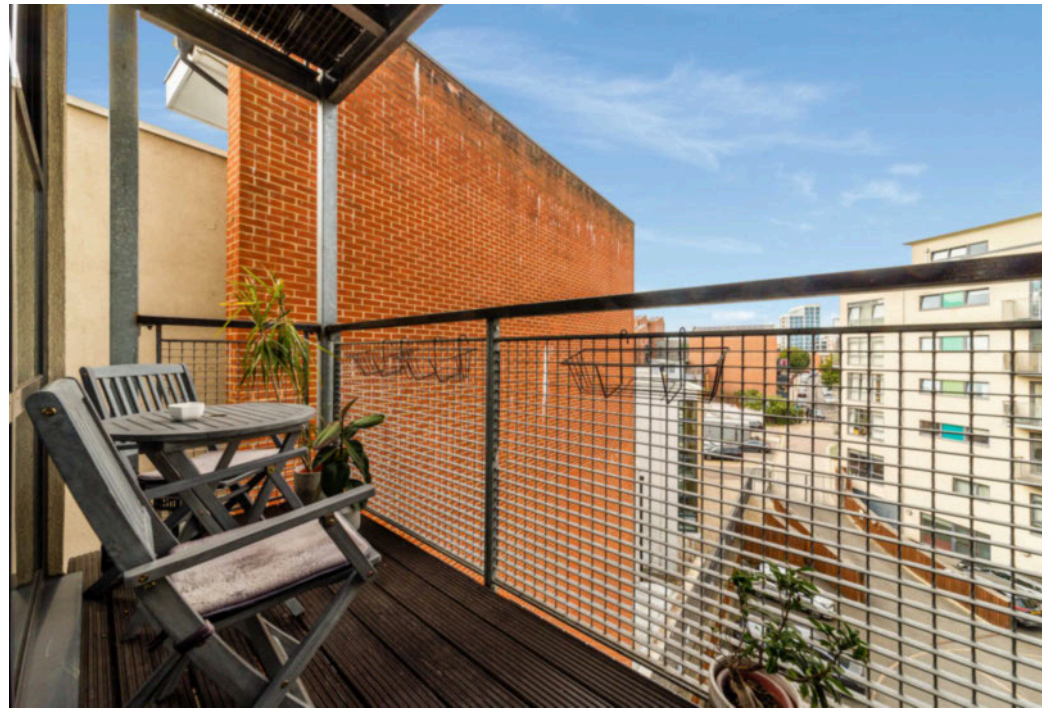


Carmine Wharf, Copenhagen Place, Limehouse, E14

Asking price **£367,000** | Leasehold



Carmine Wharf, Copenhagen Place, Limehouse, E14



1 Bedroom



1 Bathroom



1 Reception



Balcony



Secure Parking
Available



Local Amenities



Nearby Parks



0.3 MI Westferry

Spacious one-bedroom property with a balcony and secure parking in the attractive Carmine Wharf, a secure development in Limehouse E14. The accommodation comprises a stylish, open-plan kitchen/reception area extending onto the balcony, an ample-sized bedroom, and a modern family-size bathroom. Features include wood flooring, floor-to-ceiling glazing, a generous built-in wardrobe, and modern bathroom ware. This property is offered in immaculate condition with a well-designed living space and with plenty of storage provisions throughout. In addition to this, this apartment also comes with secure allocated parking for one car.

The building is adjacent to Limehouse Cut Canal and has excellent local amenities including a Lidl supermarket, a Tesco Express, Cafés, and dry cleaners, all within walking distance. The nearby Westferry DLR provides easy commutes, or residents can take advantage of secure bicycle storage and cycle to their desired destination. Mile End Underground station is a short distance away for commutes via Central, District, and Hammersmith & City lines.



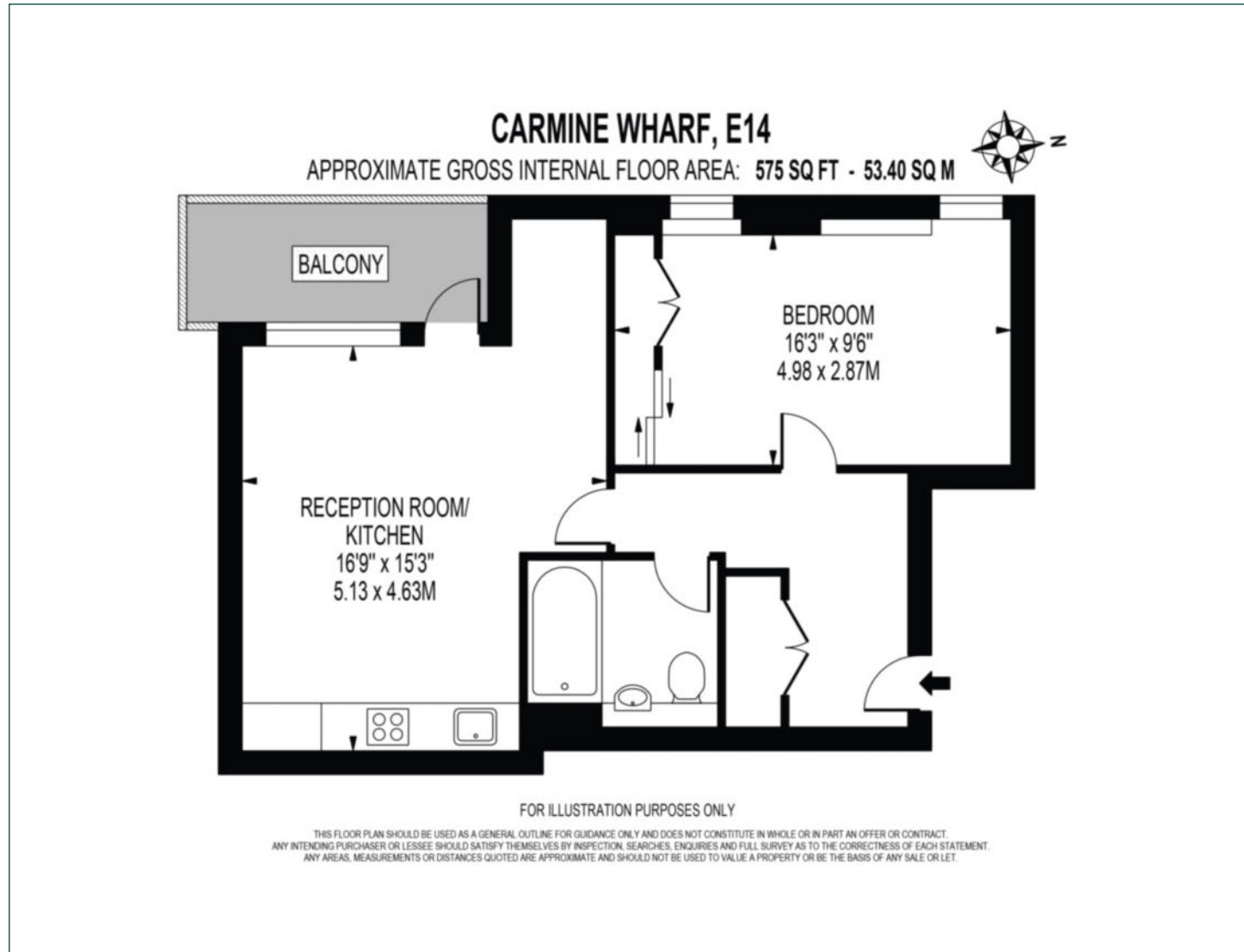
Tenure: Leasehold (110 years remaining) **Local Authority:** Tower Hamlets

Ground Rent: £250 p.a. **Council Tax Band:** C

Service Charge: £3,303 p.a. **EPC:** C

Floorplan

575 sq ft | 53.40 sq m



Canary Wharf

Horizon Building, 15 Hertsmere Road, London, E14 4AW

Sales

020 7515 1001 | canarywharf.sales@chaseevans.co.uk

We're here to help.

IMPORTANT NOTICE - These particulars have been prepared in good faith and they are not intended to constitute part of an offer or contract. We have not performed a structural survey on this property and the services, appliances and specific fittings have not been tested. All photographs, measurements, floor plans and distances referred to are given as a guide and should not be relied upon.

chaseevans.com