



Vespucci Court, Aston Street, Limehouse, E14

OIEO **£390,000** | Leasehold



Vespucci Court, Aston Street, Limehouse, E14



1 Bedroom



1 Bathroom



1 Reception



Winter Garden



Secure Bike Storage



Gymnasium



Local Amenities



24-Hour Concierge



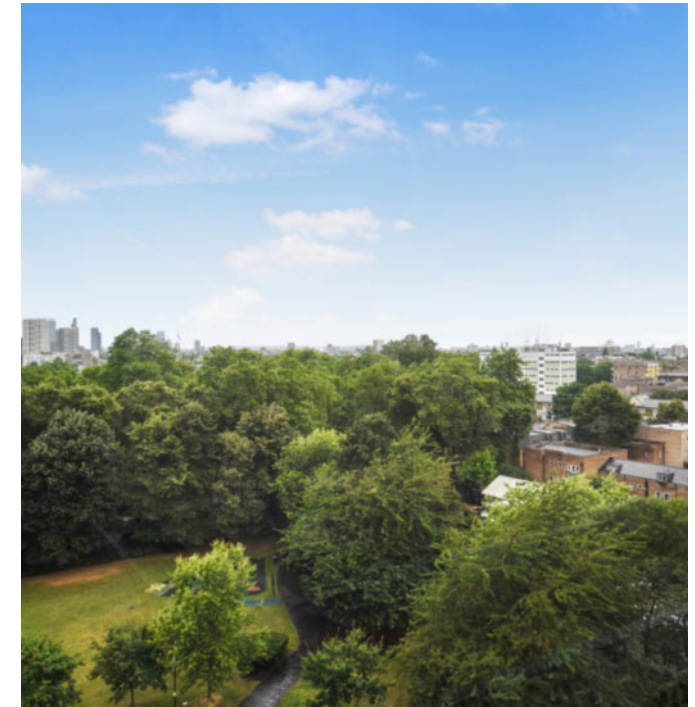
0.4 MI Limehouse

This is a well-proportioned, light and airy, 8th floor one bedroom property set within Vespucci Court.

Accommodation spans 547 sq ft and features an open-plan fitted kitchen/living room, floor to ceiling glazing leading to a generous winter garden with collapsible windows providing views across the park and London, Bosch kitchen appliances, wood flooring, underfloor heating, large bedroom with fitted storage, modern bathroom with stylish fittings and fixtures, built-in hallway closet.

Residents have access to 24-Hour on-site security, video entry system with multiple secured doors, onsite gymnasium and yoga room included, secure bike storage in basement. Situated just a stone's throw away from Limehouse Station providing excellent quick links to Canary Wharf and Bank.

Near Narrow Street and Whitehorse Park, residents can enjoy leisurely strolls along the picturesque waterways or explore the array of cafes, restaurants, and shops nearby, Stepney City Farm.



Tenure: Leasehold (240 years remaining)

Local Authority: Tower Hamlets

Ground Rent: £250 p.a.

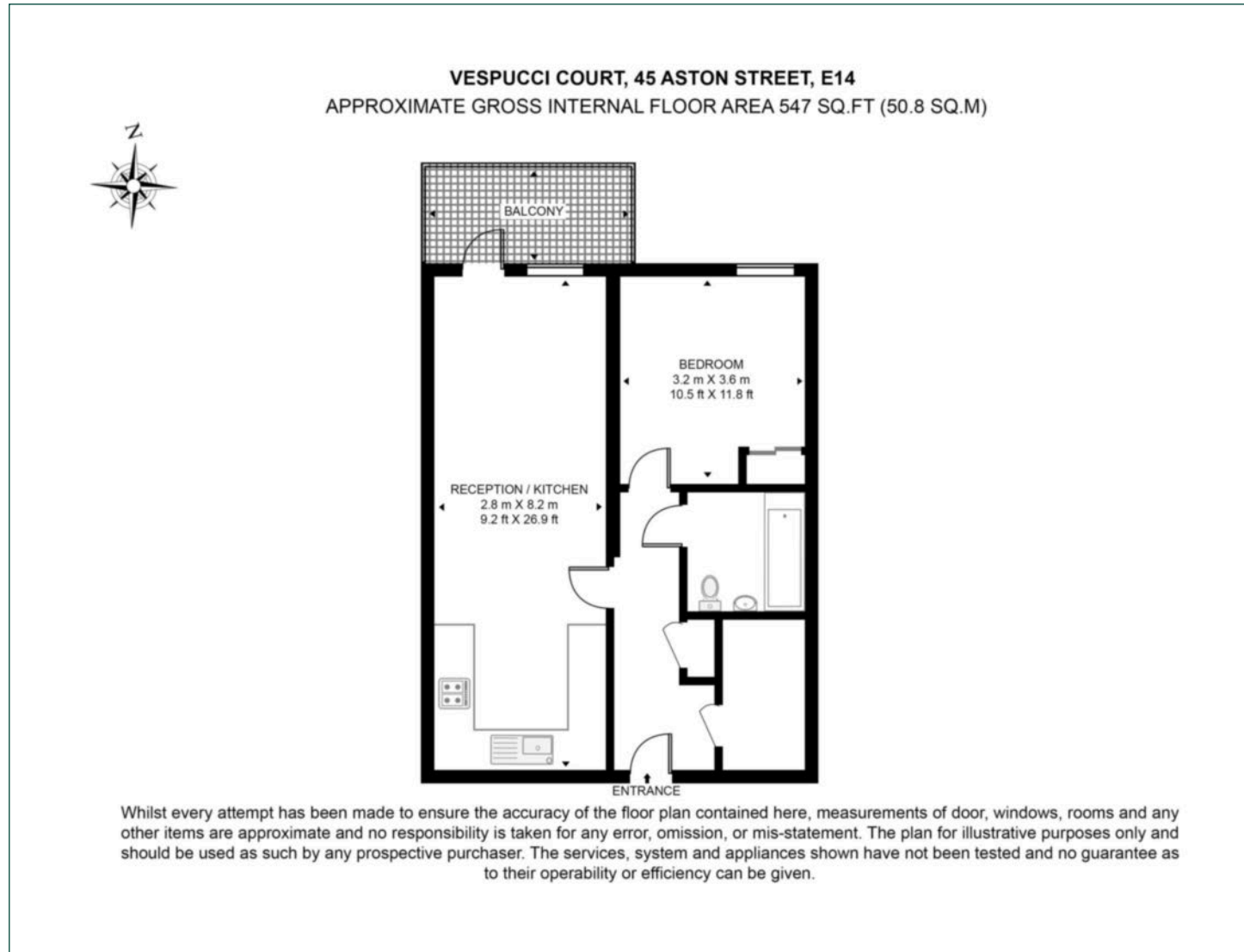
Council Tax Band: C

Service Charge: £3,605.52 p.a.

EPC: B

Floorplan

547 sq ft | 50.8 sq m



Canary Wharf

Horizon Building, 15 Hertsmere Road, London, E14 4AW

Sales

020 7515 1001 | canarywharf.sales@chaseevans.com

We're here to help.

IMPORTANT NOTICE - These particulars have been prepared in good faith and they are not intended to constitute part of an offer or contract. We have not performed a structural survey on this property and the services, appliances and specific fittings have not been tested. All photographs, measurements, floor plans and distances referred to are given as a guide and should not be relied upon.

chaseevans.com