



## Ceram Court, Caspian Wharf, Seven Sea Gardens, Bow, E3

Price **£525 per week** | Furnished



# Ceram Court, Caspian Wharf, Seven Sea Gardens, Bow, E3



2 Bedrooms



2 Bathrooms



1 Reception



Balcony



24-Hour Concierge



Nearby Parks



0.4 MI Devons Road

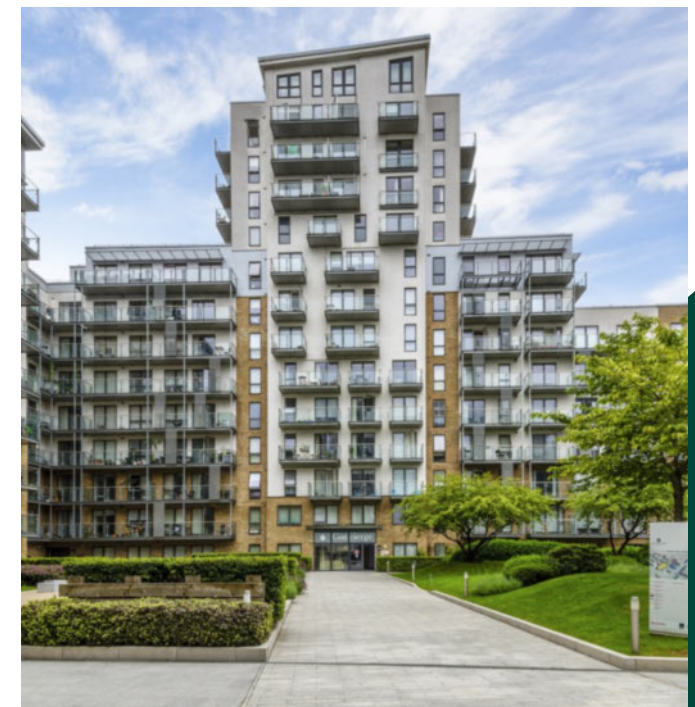
Modern two bed, two bath apartment set within Ceram Court part of Caspian Wharf E3. This furnished property includes an inviting open-plan living and dining space, fitted kitchen with integrated appliances, wood flooring and full length windows that lead to a private balcony, two generous double bedrooms, master with fitted bedroom storage and an en suite bathroom, plus a modern bathroom in the hallway.

Residents of Caspian Wharf benefit from on-site facilities including a 24-hour concierge service and supermarket.

Locally, there are numerous green spaces including Mile End Park and Bartlett Park.

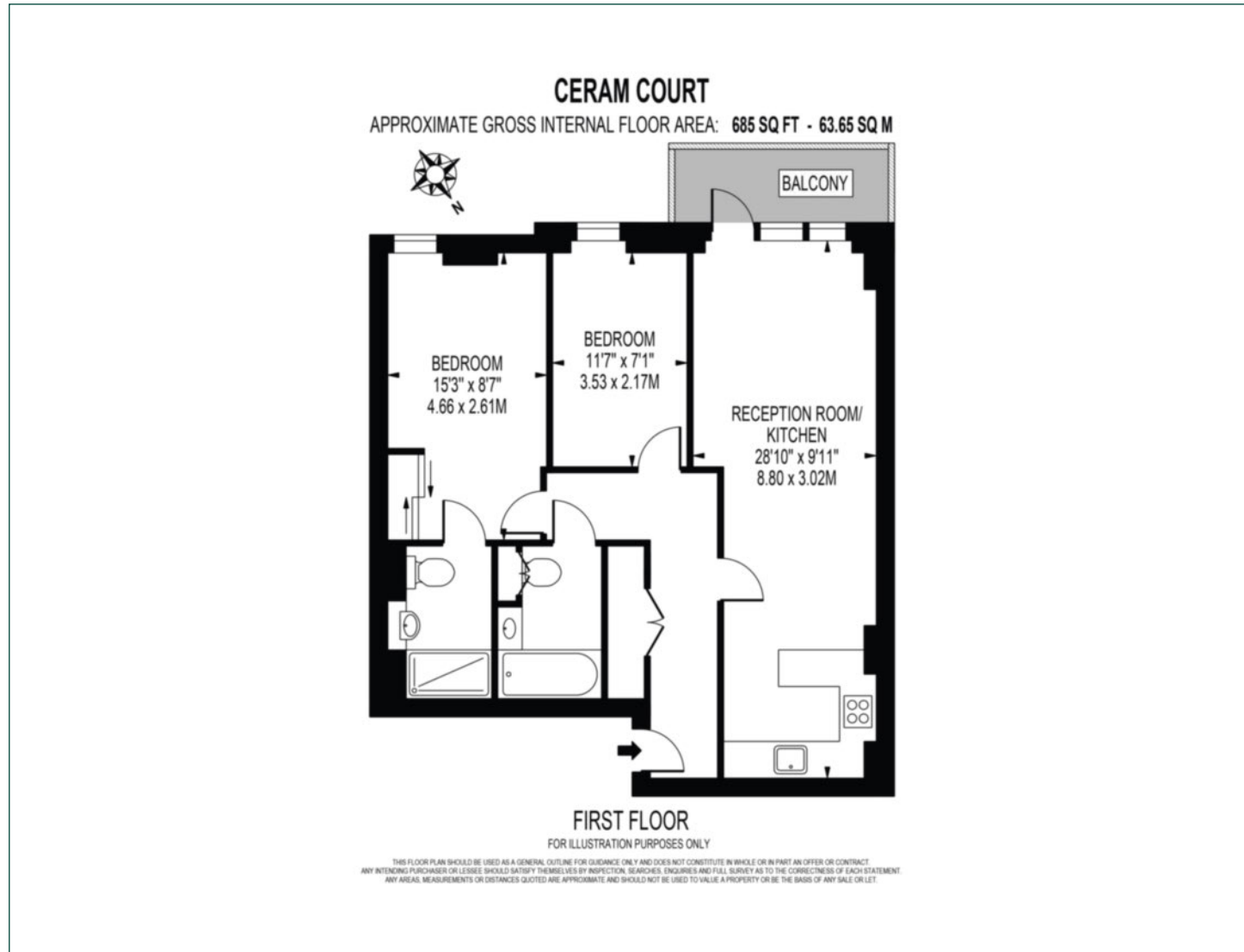
For transport links; Devons Road (8mins walk) and Langdon Park (8mins) stations offer DLR services and just three quarters of a mile away is Bromley-by-Bow Underground for District and Hammersmith & City line services which make commutes to Canary Wharf possible in 16mins and Moorgate in 23mins.

<b>Local Authority:</b>	Tower Hamlets
<b>Council Tax Band:</b>	D
<b>EPC:</b>	C
<b>Security deposit:</b>	equivalent to 5 weeks' rent



# Floorplan

685 sq ft | 63.65 sq m



## City & Aldgate

122 Whitechapel High Street, London, E1 7PT

## Lettings

020 7247 3888 | [city.lettings@chaseevans.com](mailto:city.lettings@chaseevans.com)

## We're here to help.

IMPORTANT NOTICE - These particulars have been prepared in good faith and they are not intended to constitute part of an offer or contract. We have not performed a structural survey on this property and the services, appliances and specific fittings have not been tested. All photographs, measurements, floor plans and distances referred to are given as a guide and should not be relied upon.

[chaseevans.com](https://chaseevans.com)