



Riemann Court, Parkside, Bow Common Lane, Bow, E3

Price **£415 per week** | Furnished



Riemann Court, Parkside, Bow Common Lane, Bow, E3



1 Bedroom



1 Bathroom



1 Reception



Communal Gardens



Secure Cycle Storage



Gymnasium



Local Amenities



0.4 MI Devons Road

Luxury one bedroom apartment in Parkside, Bow E3, a beautifully designed development by Galliard Homes close to Canary Wharf. This fantastic third floor property offers a spacious open plan living room, wood flooring, floor to ceiling glazing, fully integrated stylish kitchen, spacious bedroom and modern bathroom.

Residents benefit from on-site leisure facilities, secure cycle storage and communal gardens. The development is located close to Limehouse cut canal and Devons Road DLR station, providing a valuable option for commuting towards Canary

Wharf and other key destinations within the Capital. There are amenities located nearby including bars, cafés, restaurants and shops.

Local Authority:

Tower Hamlets

Council Tax Band:

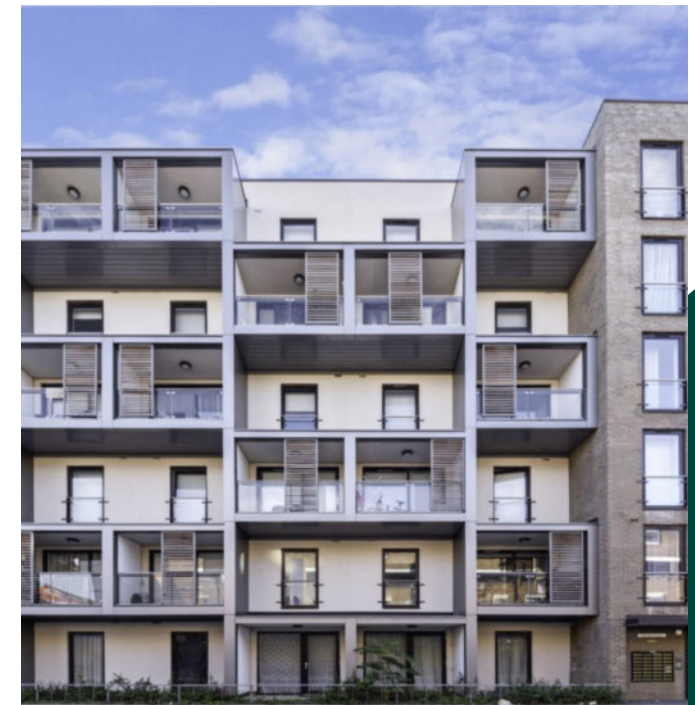
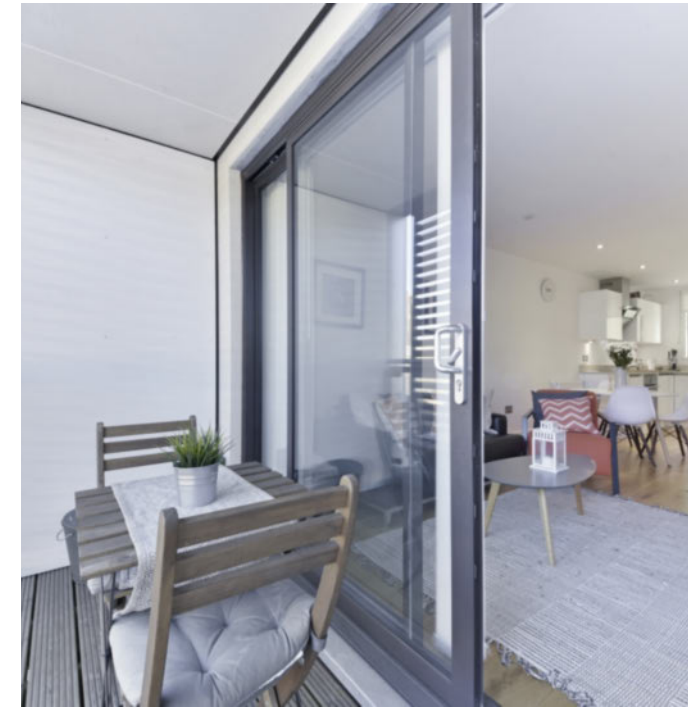
C

EPC:

B

Security deposit:

equivalent to 5 weeks' rent



Floorplan

498 sq ft | 46.3 sq m



Canary Wharf

Horizon Building, 15 Hertsmere Road, London, E14 4AW

Lettings

020 7515 1000 | canarywharf.lettings@chaseevans.co.uk

We're here to help.

IMPORTANT NOTICE - These particulars have been prepared in good faith and they are not intended to constitute part of an offer or contract. We have not performed a structural survey on this property and the services, appliances and specific fittings have not been tested. All photographs, measurements, floor plans and distances referred to are given as a guide and should not be relied upon.

[chaseevans.com](https://www.chaseevans.com)

 Chase Evans