



**Ivy Point, No. 1 The Avenue, Hannaford Walk,
Bow, E3**

Price **£675 per week** | Furnished



© Chase Evans



© Chase Evans












© Chase Evans



© Chase Evans

Ivy Point, No. 1 The Avenue, Hannaford Walk, Bow, E3

-  3 Bedrooms
-  2 Bathrooms
-  1 Reception
-  Balcony
-  Gymnasium
-  Communal Roof Terrace
-  Local Amenities
-  24-Hour Concierge
-  0.2 MI Devons Road

A dual-aspect three bedroom two bathroom apartment set within No 1 The Avenue; a spectacular tower rising to 17 stories in the heart of Bow E3. This property comprises an open-plan living area featuring Amtico Spacia flooring, fully fitted kitchen with modern integrated appliances, a highly specified bathroom suite as well as an en-suite to the master bedroom and a private balcony.

Residents benefit from access to the communal roof terrace with breath-taking views across the London skyline, 24-hour concierge service, gymnasium access and exceptional transport links

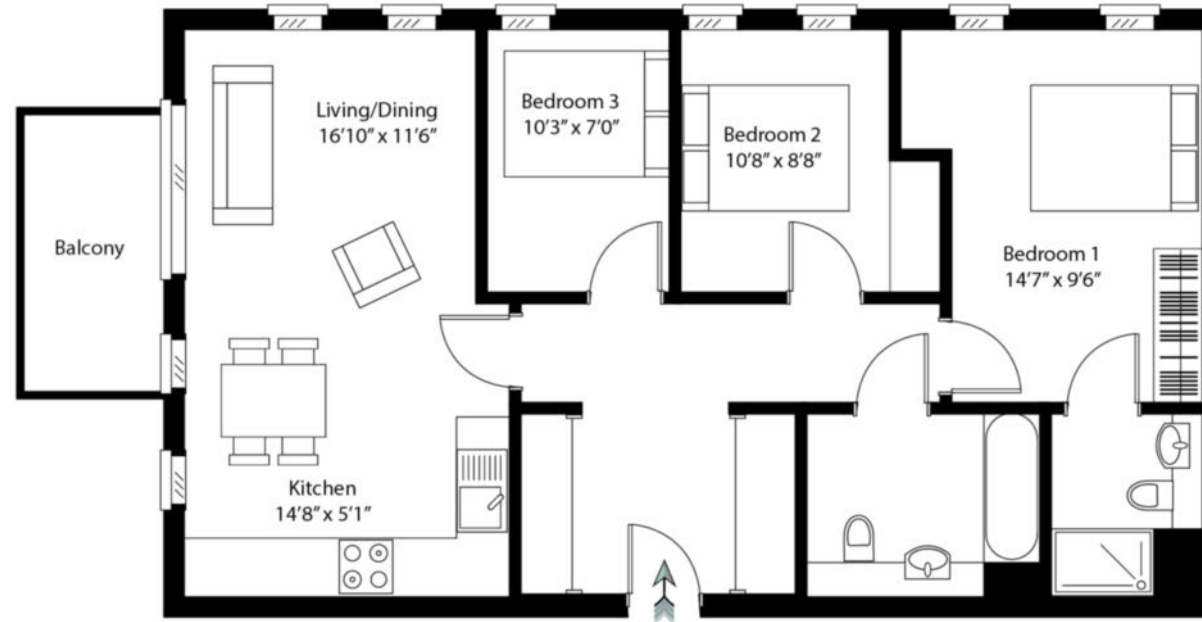
being adjacent to Devons Road DLR and moments from Bromley-by-Bow for the District Line.

Local Authority:	Tower Hamlets
Council Tax Band:	E
EPC:	B
Security deposit:	equivalent to 5 weeks' rent



Floorplan

867 sq ft | 80.0 sq m



No 1 The Avenue, Bromley-by-Bow E3
Approx. Gross Internal Area 867 sq ft 80.0 sq m



Chase Evans make every attempt to ensure accuracy, however all measurements are approximate. All aspects of this floor plan is for illustrative purposes only and not to scale. Errors and omissions excepted (E&OE).

Canary Wharf

Horizon Building, 15 Hertsmere Road, London, E14 4AW

Lettings

020 7515 1000 | canarywharf.lettings@chaseevans.co.uk

We're here to help.

IMPORTANT NOTICE - These particulars have been prepared in good faith and they are not intended to constitute part of an offer or contract. We have not performed a structural survey on this property and the services, appliances and specific fittings have not been tested. All photographs, measurements, floor plans and distances referred to are given as a guide and should not be relied upon.

chaseevans.com