



## Cassia Point, Glasshouse Gardens, Monfitchet Road, Stratford, E20

OIEO **£425,000** | Leasehold



# Cassia Point, Glasshouse Gardens, Monfitchet Road, Stratford, E20



1 Bedroom



1 Bathroom



1 Reception



Balcony



Gymnasium



Local Amenities



24-Hour Concierge



0.2 MI Stratford

Fantastic one bedroom property located within Glasshouse Gardens, a luxury development set in landscaped gardens overlooking the Olympic legacy landmarks. Accommodation spans 568 sq ft and comprises an open plan living/dining area, sleek fitted kitchen with integrated appliances, private balcony, large master bedroom with fitted wardrobes and modern bathroom suite.

Residents will also have access to a 24-hour concierge service and on-site fitness facilities. There are several amenities located nearby including Westfield Stratford City and the Stratford Centre.

The development is located near to Stratford station, providing Underground, DLR and rail services for commutes across the Capital.



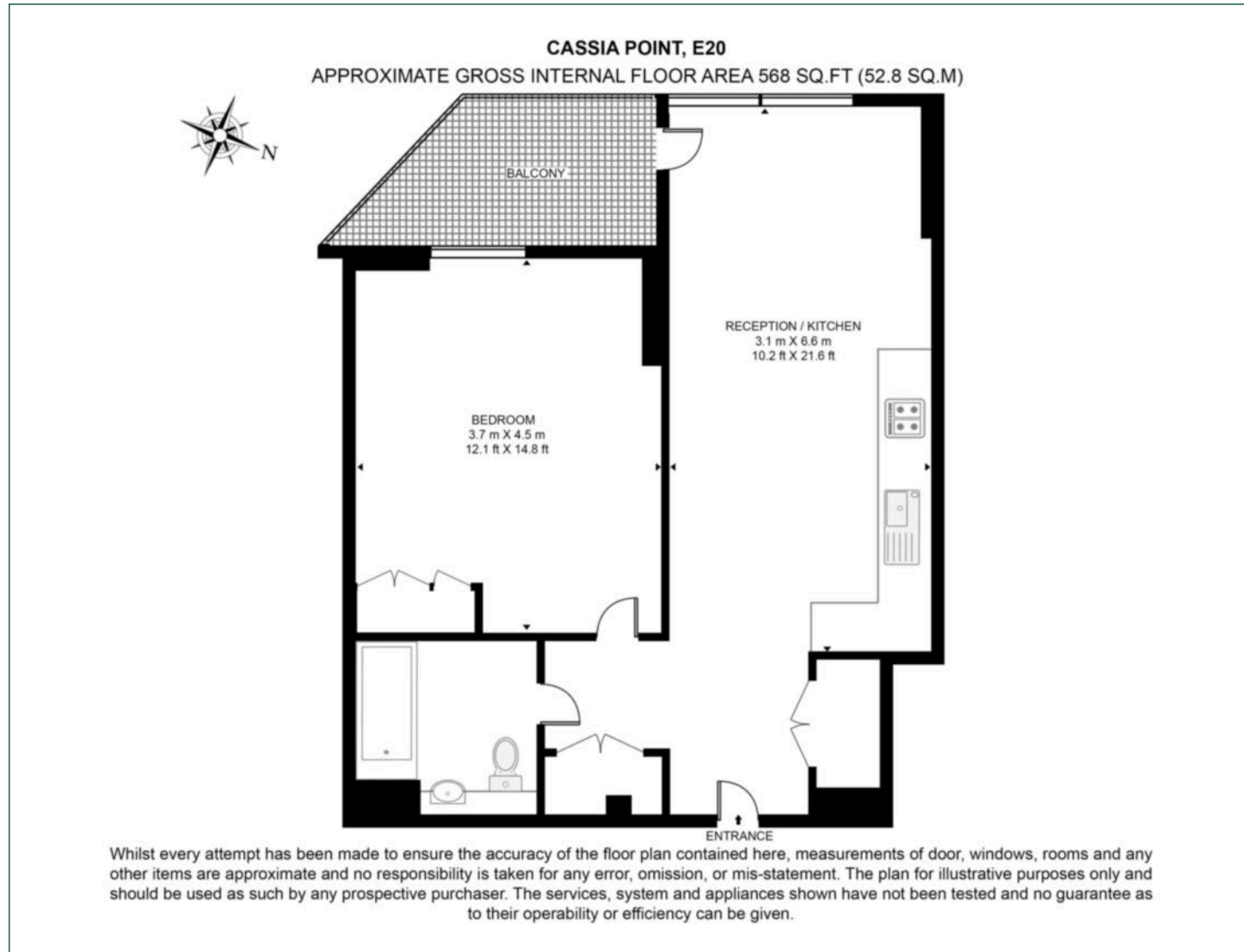
**Tenure:** Leasehold (992 years remaining) **Local Authority:** Newham

**Ground Rent:** £350 p.a. **Council Tax Band:** C

**Service Charge:** £3,000 p.a. **EPC:** B

# Floorplan

568 sq ft | 52.8 sq m



## Canary Wharf

Horizon Building, 15 Hertsmere Road, London, E14 4AW

## Sales

020 7515 1001 | [canarywharf.sales@chaseevans.com](mailto:canarywharf.sales@chaseevans.com)

## We're here to help.

IMPORTANT NOTICE - These particulars have been prepared in good faith and they are not intended to constitute part of an offer or contract. We have not performed a structural survey on this property and the services, appliances and specific fittings have not been tested. All photographs, measurements, floor plans and distances referred to are given as a guide and should not be relied upon.

[chaseevans.com](http://chaseevans.com)

 Chase Evans