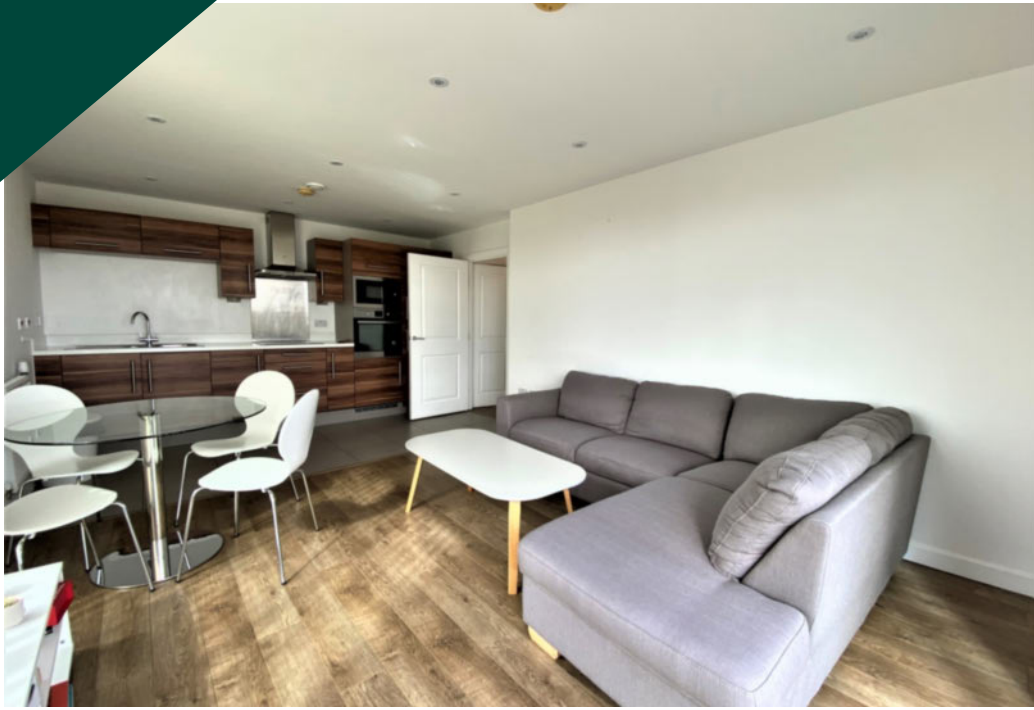




## Bootmakers Court, The Watermark, Ben Jonson Road, Mile End, E1

Price **£575 per week** | Furnished





# Bootmakers Court, The Watermark, Ben Jonson Road, Mile End, E1



2 Bedrooms



2 Bathrooms



1 Reception



Balcony



Communal Gardens



Local Amenities

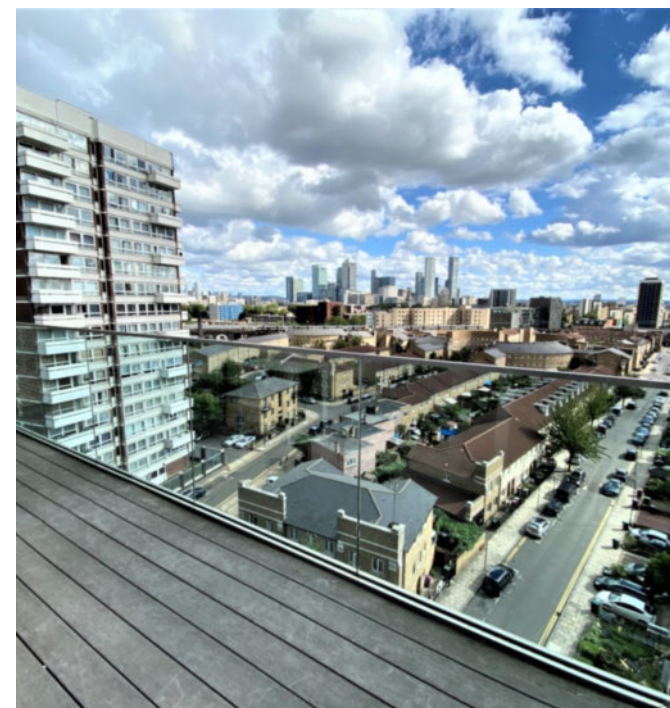


0.7 MI Stepney Green

A modern two bedroom, two bathroom apartment with a balcony within in The Watermark, a recent development in Mile End. The open plan kitchen/living room features wood flooring and has to the generous balcony as the does one of two double bedroom. The master bedroom is with an en-suite bathroom and there is a further bathroom. minute walk away.

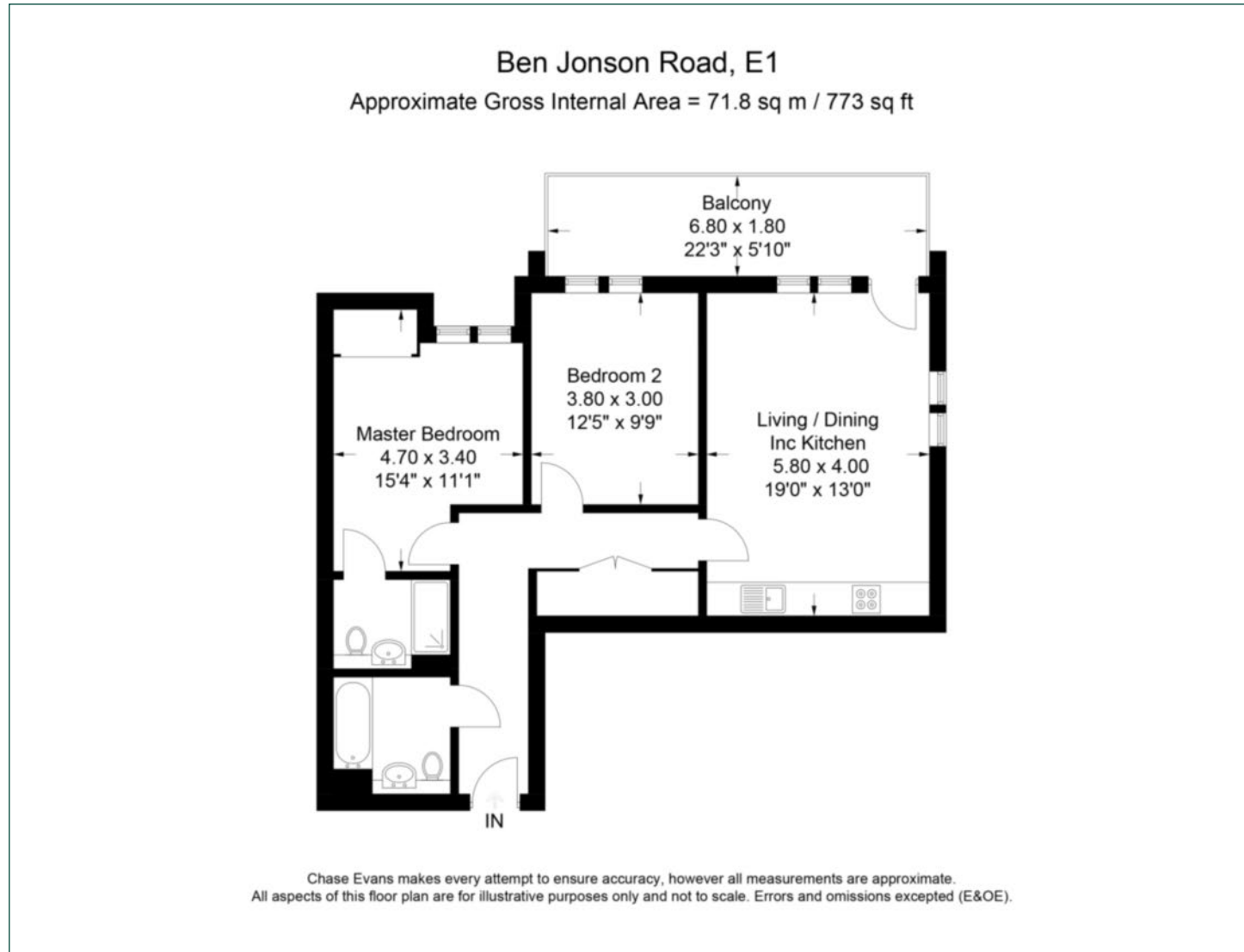
The apartment is conveniently located for a quick Rail, Underground or DLR commute to both, the City and Canary Wharf. Regent's Canal, Mile End Park and the Limehouse Basin are all a short walk away. The nearest station is Stepney Green, a 13-

<b>Local Authority:</b>	Tower Hamlets
<b>Council Tax Band:</b>	D
<b>EPC:</b>	B
<b>Security deposit:</b>	equivalent to 5 weeks' rent



# Floorplan

773 sq ft | 71.8 sq m



## Canary Wharf

Horizon Building, 15 Hertsmere Road, London, E14 4AW

## Lettings

020 7515 1000 | [canarywharf.lettings@chaseevans.co.uk](mailto:canarywharf.lettings@chaseevans.co.uk)

## We're here to help.

IMPORTANT NOTICE - These particulars have been prepared in good faith and they are not intended to constitute part of an offer or contract. We have not performed a structural survey on this property and the services, appliances and specific fittings have not been tested. All photographs, measurements, floor plans and distances referred to are given as a guide and should not be relied upon.

[chaseevans.com](https://www.chaseevans.com)