



No 1 West India Quay, Hertsmere Road, Canary Wharf, E14

Asking price **£495,000** | Leasehold



No 1 West India Quay, Hertsmere Road, Canary Wharf, E14



1 Bedroom



1 Bathroom



1 Reception



Lift Access



Local Amenities



24-Hour Concierge



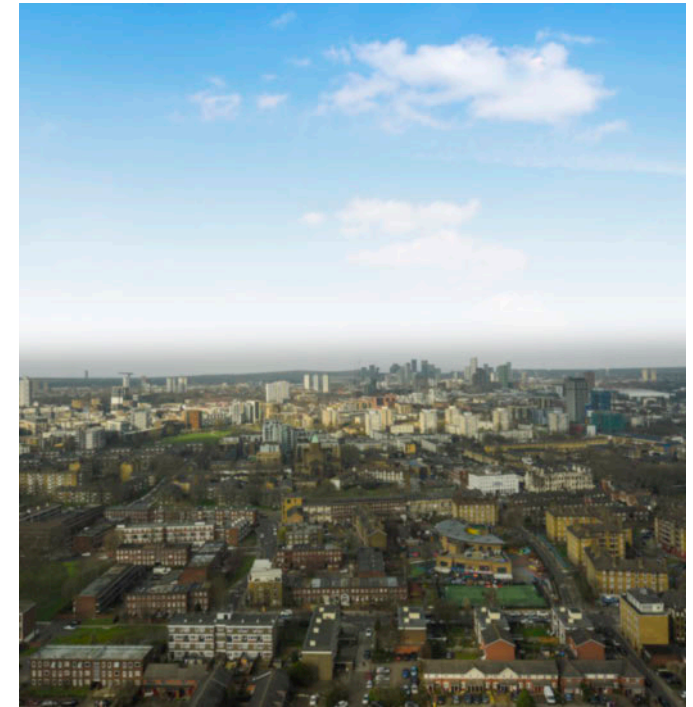
0.1 MI Poplar

A large one bedroom apartment with arranged over approx 606 sq ft on the 30th floor of an iconic residential development located in the heart of Canary Wharf. Features include a large living room with far reaching views across London, full-height windows, wood flooring and a well equipped open plan kitchen, ample sized bedroom and modern bathroom.

Residents also have access to a 24-hour concierge service and a lifts within the building. West India Quay overlooks the tranquil North Dock basin and is located at the end of West India Promenade, an

attractive heritage area featuring converted Victorian warehouses with a fine selection of bars and restaurants on the ground floor level.

The apartment is also very close to a wide range of amenities and attractions at Crossrail Place, Cabot Square and Jubilee Park. The closest station is West India Quay DLR - just under 250 ft away. Elizabeth Line services and Canary Wharf Underground Station are also within walking distance.



Tenure: Leasehold (979 years remaining)

Local Authority: Tower Hamlets

Ground Rent: £700 p.a.

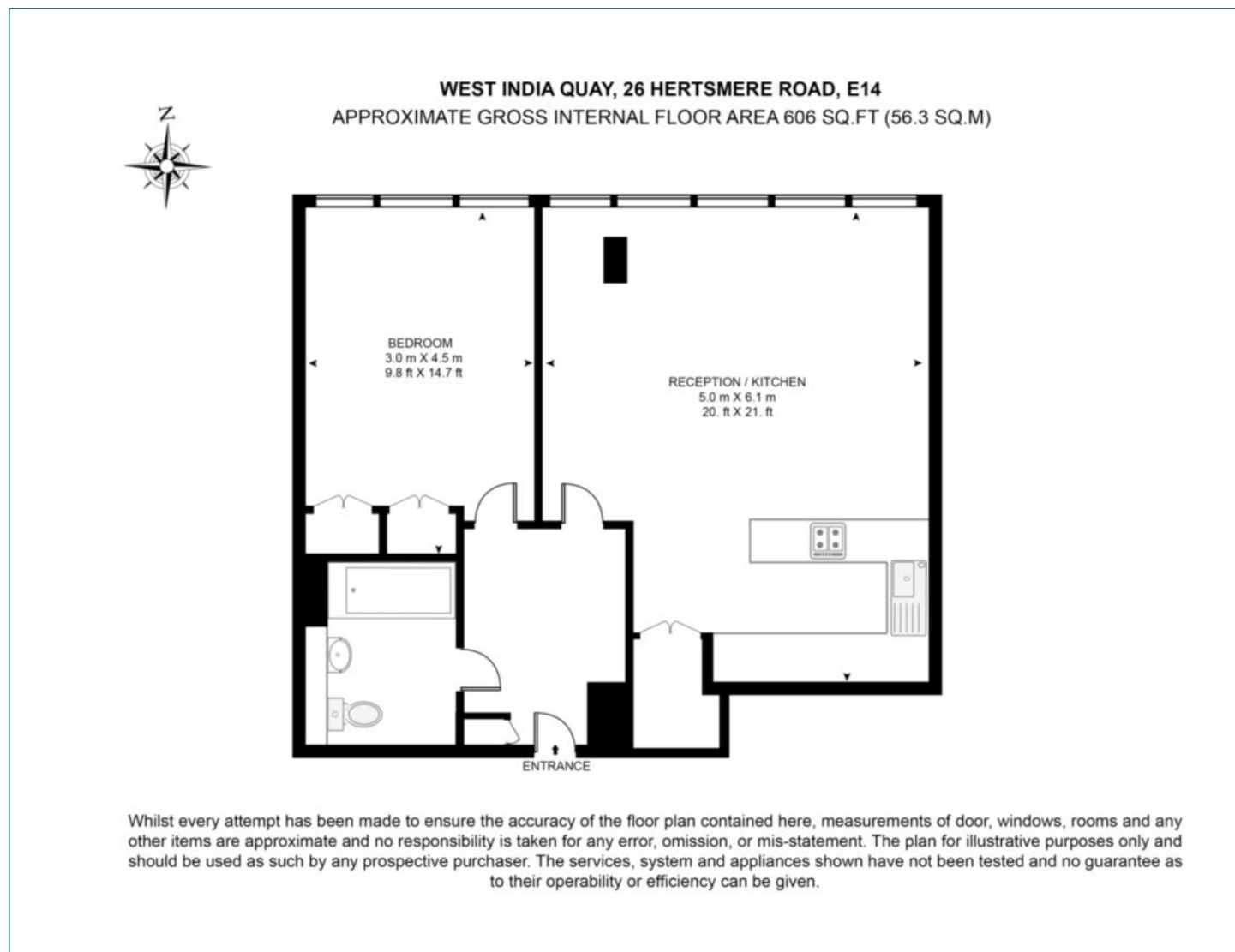
Council Tax Band: F

Service Charge: £7,500 p.a.

EPC: B

Floorplan

606 sq ft | 56.3 sq m



Pan Peninsula

Pan Peninsula, 1 Millharbour, London, E14 9XP

Sales

020 7536 7901 | panp.sales@chaseevans.com

We're here to help.

IMPORTANT NOTICE - These particulars have been prepared in good faith and they are not intended to constitute part of an offer or contract. We have not performed a structural survey on this property and the services, appliances and specific fittings have not been tested. All photographs, measurements, floor plans and distances referred to are given as a guide and should not be relied upon.

[chaseevans.com](https://www.chaseevans.com)