

Panoramic Tower, Hay Currie Street, Poplar, E14

Asking price **£350,000** | Leasehold



Panoramic Tower, Hay Currie Street, Poplar, E14



1 Bedroom



1 Bathroom



1 Reception



Private Balcony



Residents' Gym



Rooftop Terrace



Concierge Service



0.2 MI Langdon Park

A large one bedroom apartment set within the Panoramic Tower, a modern development located within easy reach of Langdon Park DLR. Features include a bright living room with a private balcony affording far reaching views across London, an open plan kitchen, floor to ceiling glazing, a double bedroom with built in wardrobes and a family bathroom with contemporary fittings.

Residents will also have access to a concierge service, residents' gymnasium and a communal roof terrace. The development is near to Langdon Park DLR station There are several amenities

located nearby including restaurants, cafés and shops. Langdon Park is within walking distance and offers a plenty of green space for leisure activities. The development is located near to Langdon Park DLR station, providing a valuable transport link for commutes to Canary Wharf and other locations within the capital.

Tenure: Leasehold (986 years remaining) **Local Authority:** Tower Hamlets

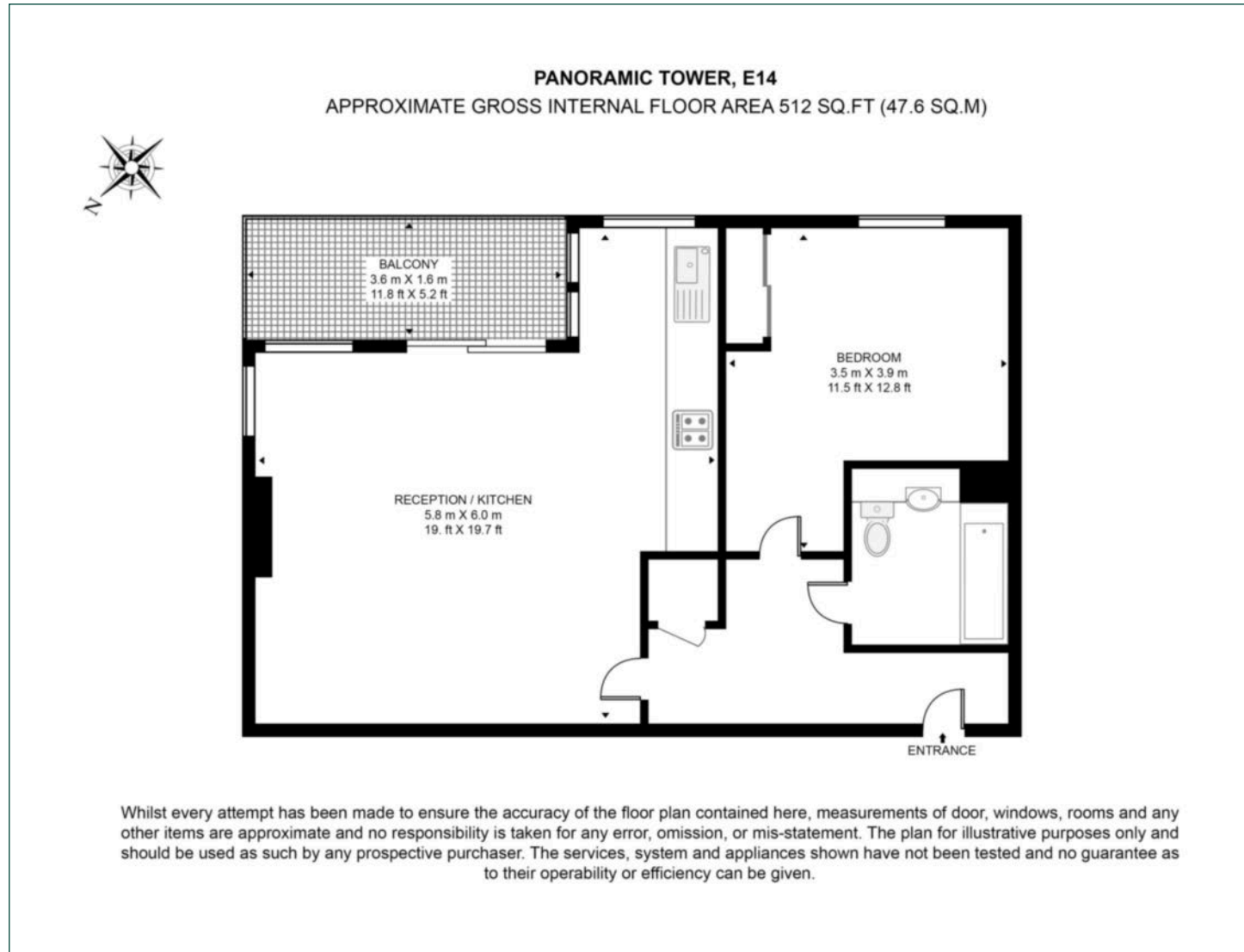
Ground Rent: £250 p.a. **Council Tax Band:** C

Service Charge: Approx. £3,400 p.a. **EPC:** C



Floorplan

512 sq ft | 47.6 sq m



Canary Wharf

Horizon Building, 15 Hertsmere Road, London, E14 4AW

Sales

020 7515 1001 | canarywharf.sales@chaseevans.com

We're here to help.

IMPORTANT NOTICE - These particulars have been prepared in good faith and they are not intended to constitute part of an offer or contract. We have not performed a structural survey on this property and the services, appliances and specific fittings have not been tested. All photographs, measurements, floor plans and distances referred to are given as a guide and should not be relied upon.

chaseevans.com

 Chase Evans