



## Kara Court, Caspian Wharf, Seven Sea Gardens, Bow, E3

Asking price **£365,000** | Leasehold



# Kara Court, Caspian Wharf, Seven Sea Gardens, Bow, E3



1 Bedroom



1 Bathroom



1 Reception



Balcony



Secure Gated Development



Local Amenities



24-Hour Concierge



0.3 MI Devons Road

Bright and spacious one bedroom, one bathroom apartment set within Kara Court, within the impressive Caspian Wharf development located in Bow.

This apartment includes an inviting open plan living and dining area, stylish fitted kitchen with integrated appliances, wooden flooring, floor to ceiling windows, recessed lighting, good sized bedroom with fitted storage, modern bathroom suite and a private balcony. Ample storage throughout the property including large storage cupboard's in the hallway.

Caspian Wharf is a secure gated development with 24-hour concierge services, residents have access to two

roof terraces and beautiful landscaped gardens, an onsite supermarket and dry cleaning services. There are amenities nearby including restaurants, bars and shops. Also close to the Limehouse Cut Canal and Spratt's Patent Limited which is a famous old warehouse building. The development is close to Devons Road DLR station with services to Canary Wharf and the City.

Also close to the Limehouse Cut Canal and Spratt's Patent Limited which is a famous old warehouse building. The development is close to Devons Road DLR station with services to Canary Wharf and the City.



**Tenure:** Leasehold (987 years remaining)

**Local Authority:** Tower Hamlets

**Ground Rent:** £300 p.a.

**Council Tax Band:** C

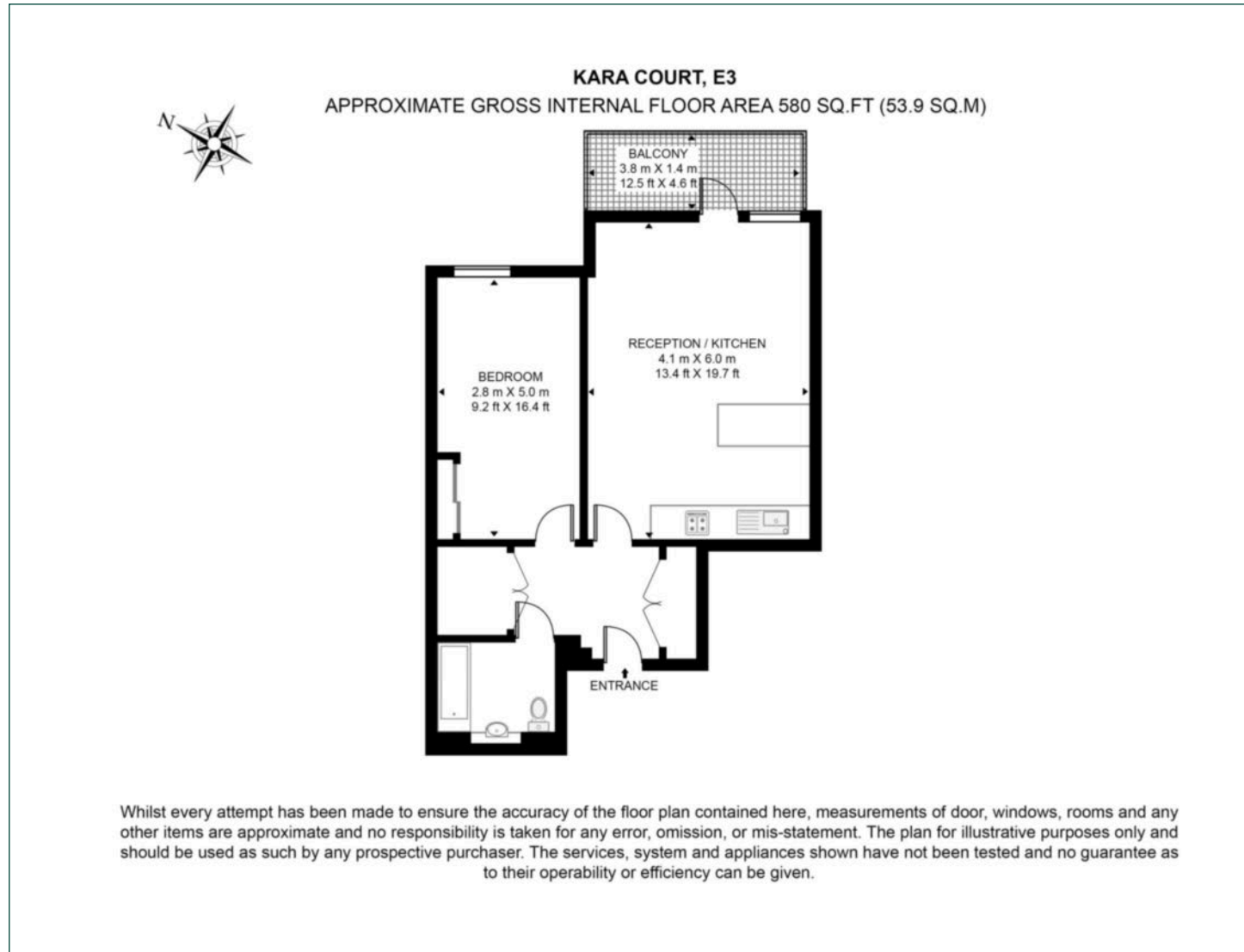
**Service Charge:** £2,300 p.a.

**EPC:** C



# Floorplan

580 sq ft | 53.9 sq m



## City & Aldgate

122 Whitechapel High Street, London, E1 7PT

## Sales

020 7488 2777 | [city.sales@chaseevans.com](mailto:city.sales@chaseevans.com)

## We're here to help.

IMPORTANT NOTICE - These particulars have been prepared in good faith and they are not intended to constitute part of an offer or contract. We have not performed a structural survey on this property and the services, appliances and specific fittings have not been tested. All photographs, measurements, floor plans and distances referred to are given as a guide and should not be relied upon.

[chaseevans.com](http://chaseevans.com)

 Chase Evans