

Nelson Walk, St Andrews, Bow, E3

Asking price **£480,000** | Leasehold



Nelson Walk, St Andrews, Bow, E3



2 Bedrooms



2 Bathrooms



1 Reception



Balcony



Gymnasium



Local Amenities



24-Hour Concierge



0.1 MI Devons Road

Spacious two bedroom, two bathroom property with balcony set within this popular Barratts development on Nelson Walk, Bow E3. This property comprises a bright reception room with full height windows, sliding doors opening onto a private balcony and a stylish, modern integrated kitchen suite. Two large bedrooms with master en-suite, family bathroom suite, large balcony area and ample storage space throughout.

Residents of this development benefit from access to a gymnasium, concierge and the excellent local amenities. Sainsbury's Local located on site with

larger supermarkets nearby. The development is located 4mins walk from both Devons Road DLR and Bromley-by-Bow Underground stations, providing valuable transport links along District, Hammersmith & City and DLR Lines for easy commutes towards Canary Wharf and the City. Canary Wharf, Crossrail (Elizabeth Line) hub is reachable in just under 15mins.

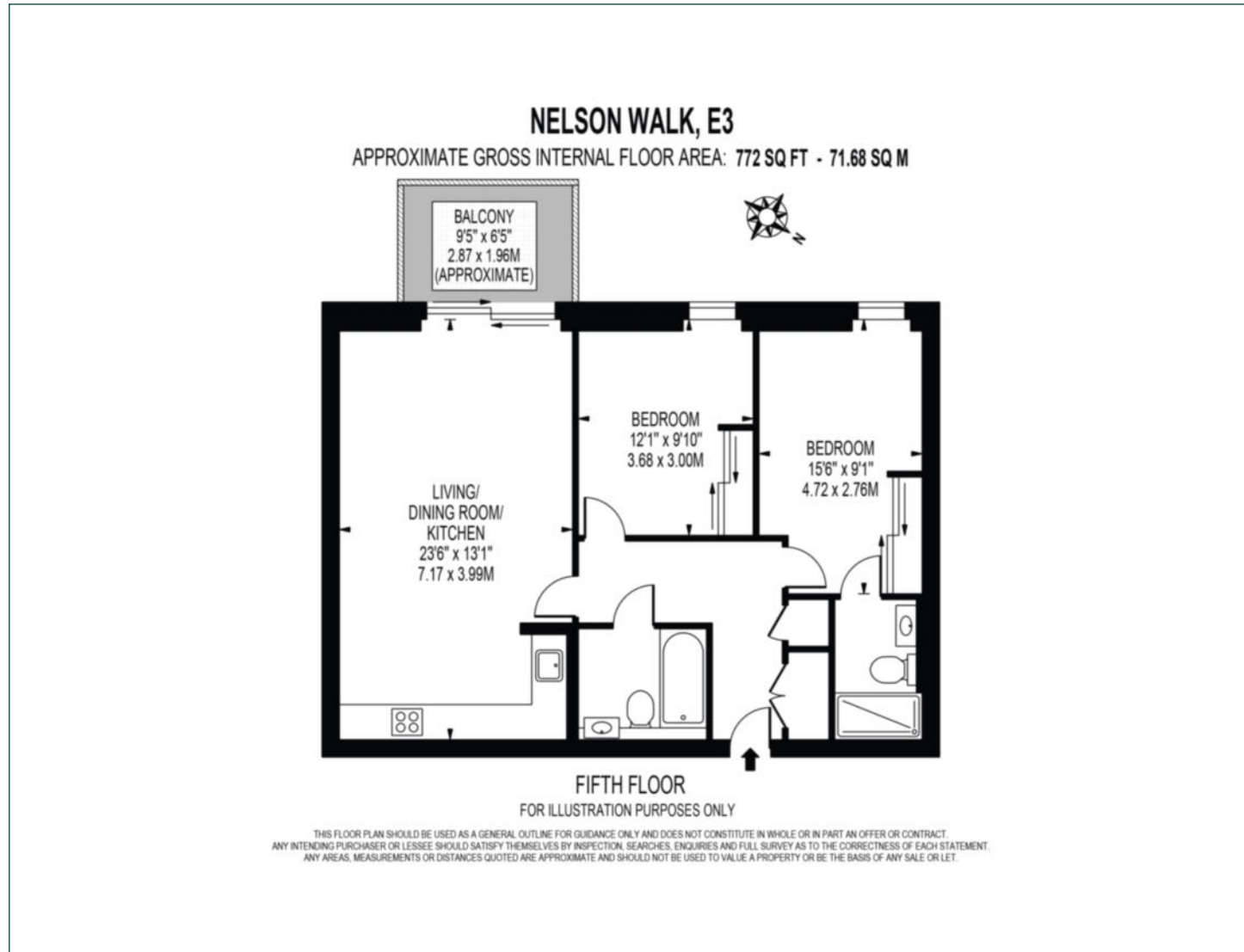
Tenure: Leasehold (114 years remaining) **Local Authority:** Tower Hamlets

Ground Rent: £300 p.a. **Council Tax Band:** D

Service Charge: £2,468.66 p.a. **EPC:** B

Floorplan

772 sq ft | 71.68 sq m



Canary Wharf

Horizon Building, 15 Hertsmere Road, London, E14 4AW

Sales

020 7515 1001 | canarywharf.sales@chaseevans.co.uk

We're here to help.

IMPORTANT NOTICE - These particulars have been prepared in good faith and they are not intended to constitute part of an offer or contract. We have not performed a structural survey on this property and the services, appliances and specific fittings have not been tested. All photographs, measurements, floor plans and distances referred to are given as a guide and should not be relied upon.

chaseevans.com