



Sail Loft Court, Royal Quay, Clyde Square, Poplar, E14

Asking price **£375,000** | Leasehold



Sail Loft Court, Royal Quay, Clyde Square, Poplar, E14



1 Bedroom



1 Bathroom



1 Reception



Canal Side Location



Gated Development



Local Amenities



Concierge Service



0.5 MI Westferry

A stunning one bedroom property set on the ground floor of Sail Loft Court, located in Clyde Square, Royal Quay E14. The property has a spacious and bright open-plan kitchen/reception room, one double bedroom and a contemporary, full-size bathroom. Features include wood flooring, recessed lighting, modern and fully integrated kitchen appliances, stylish cabinetry, Citral windows, and smart bathroom fittings.

Clyde Square development is a quiet, gated canal side development providing 24-hour concierge service.

The property is located within a short walking distance of the thriving Canary Wharf district which has an array of bars, restaurants, and shops. Transport links include the Westferry DLR (0.5 miles), Limehouse DLR (0.6 miles), and Langdon Park DLR (0.9 miles).



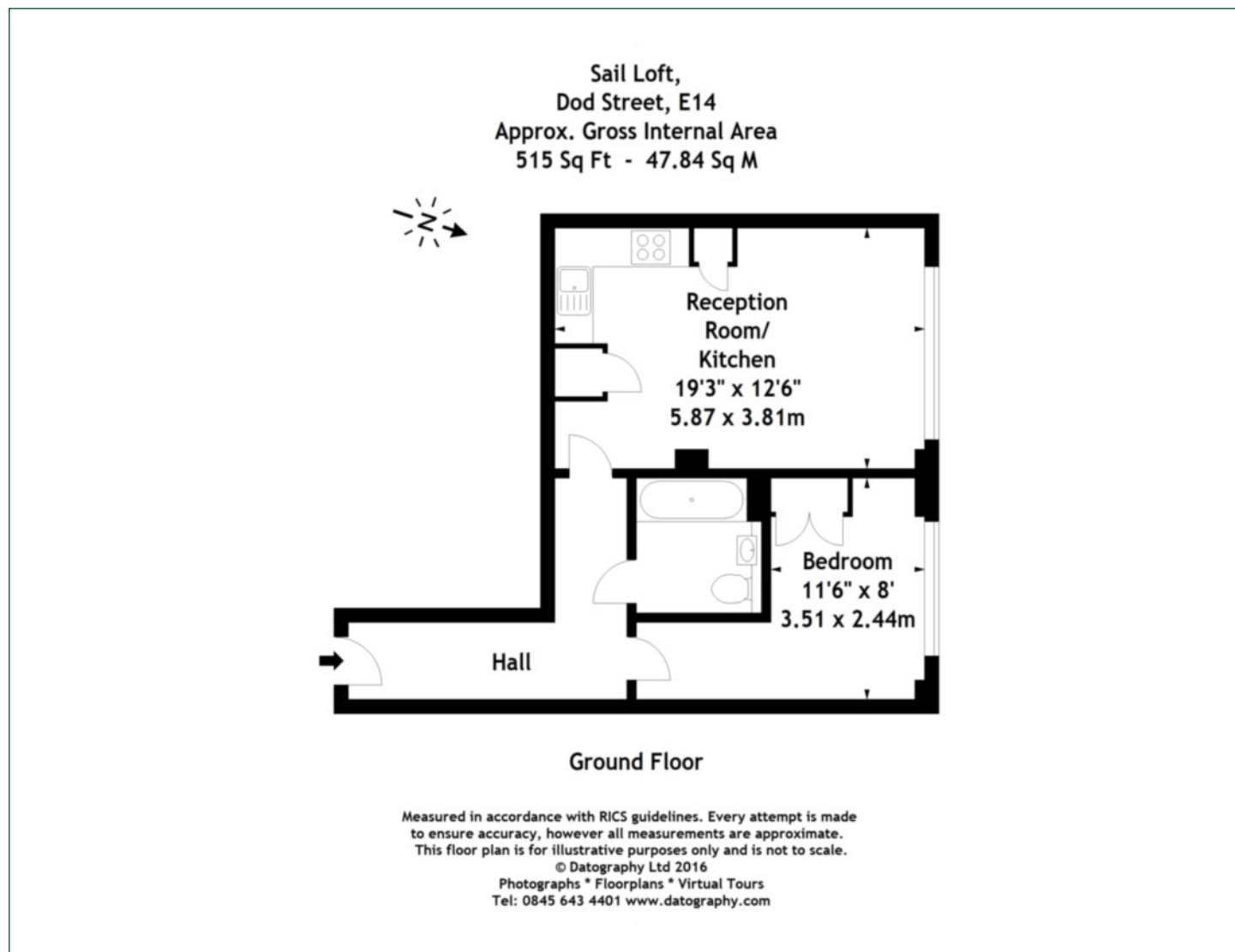
Tenure: Leasehold (992 years remaining) **Local Authority:** Tower Hamlets

Ground Rent: £450 p.a. **Council Tax Band:** H

Service Charge: £4,190.32 p.a. **EPC:** C

Floorplan

515 sq ft | 47.84 sq m



Canary Wharf

Horizon Building, 15 Hertsmere Road, London, E14 4AW

Sales

020 7515 1001 | canarywharf.sales@chaseevans.co.uk

We're here to help.

IMPORTANT NOTICE - These particulars have been prepared in good faith and they are not intended to constitute part of an offer or contract. We have not performed a structural survey on this property and the services, appliances and specific fittings have not been tested. All photographs, measurements, floor plans and distances referred to are given as a guide and should not be relied upon.

chaseevans.com