



## Trent Court, Royal Quay, Dod Street, Limehouse, E14

OIEO **£350,000** | Leasehold



# Trent Court, Royal Quay, Dod Street, Limehouse, E14



1 Bedroom



1 Bathroom



1 Reception



Canal Side Warehouse  
Conversion



Secure Cycle Storage



Local Amenities



Nearby Parks



24-Hour Concierge



0.3 MI Westferry

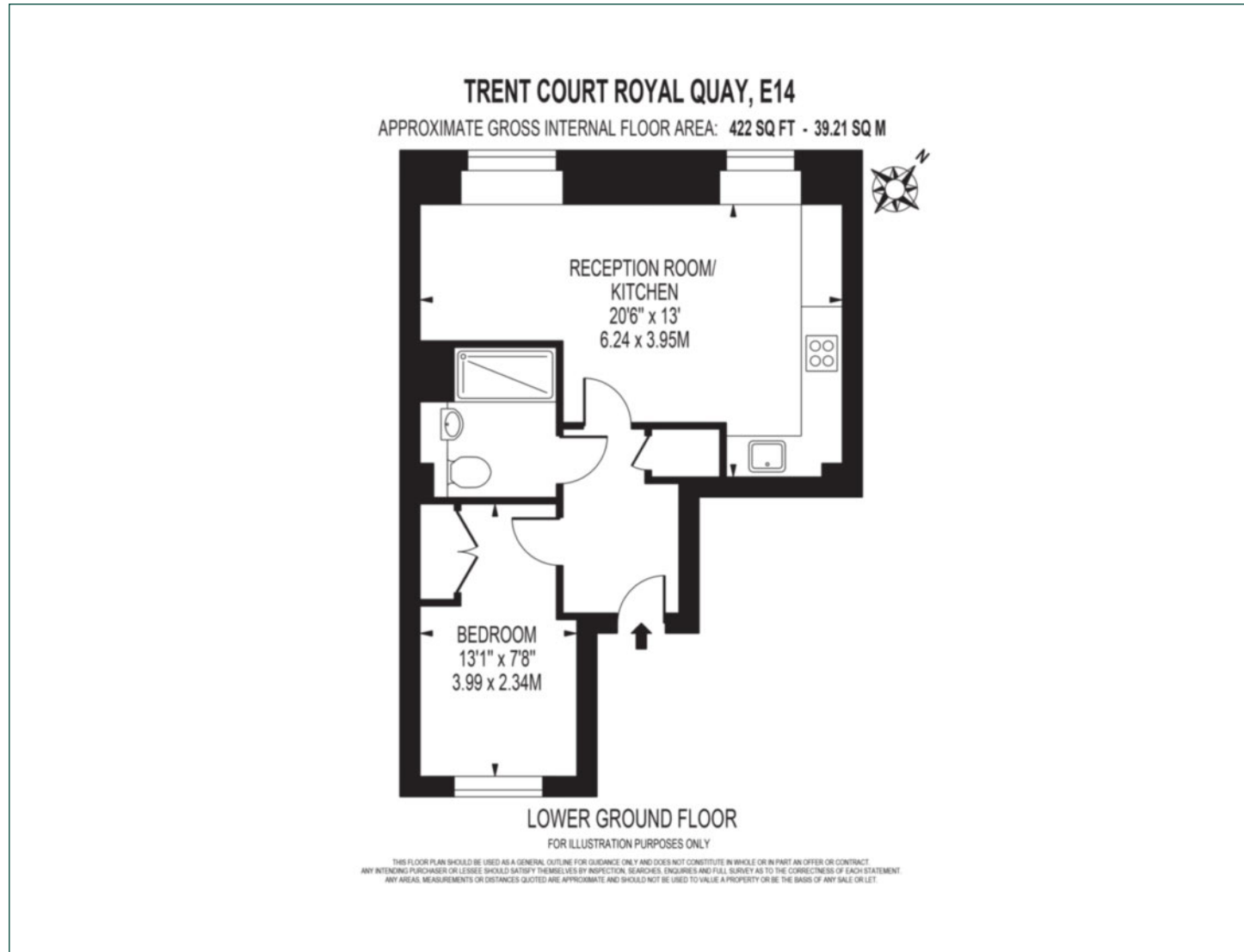
Well presented one bedroom property in Royal Quay, an attractive warehouse canal side conversion in Limehouse, E14. The bright open plan kitchen/ living room features integrated appliances, wood flooring and recessed lighting. The ample bedroom has good wardrobe space. The good size bathroom features contemporary fixtures.

Royal Quay development is conveniently located for Westferry DLR and Limehouse DLR and rail. The property is a short walk away from Bartlett Park and Mile End Park.

<b>Tenure:</b>	Leasehold (993 years)	<b>Local Authority:</b>	Tower Hamlets
<b>Ground Rent:</b>	£450 p.a.	<b>Council Tax Band:</b>	C
<b>Service Charge:</b>	Circa £3,320 p.a.	<b>EPC:</b>	D

# Floorplan

422 sq ft | 39.21 sq m



## Canary Wharf

Horizon Building, 15 Hertsmere Road, London, E14 4AW

## Sales

020 7515 1001 | [canarywharf.sales@chaseevans.co.uk](mailto:canarywharf.sales@chaseevans.co.uk)

## We're here to help.

IMPORTANT NOTICE - These particulars have been prepared in good faith and they are not intended to constitute part of an offer or contract. We have not performed a structural survey on this property and the services, appliances and specific fittings have not been tested. All photographs, measurements, floor plans and distances referred to are given as a guide and should not be relied upon.

[chaseevans.com](https://www.chaseevans.com)