





BARDOWIE CASTLE

BY MILNGAVIE, GLASGOW G62 6EY

A once in a lifetime opportunity to acquire this magnificent 'A' listed castle, in a rural setting amidst approximately ten acres of grounds, with beautiful south facing gardens including extensive frontage and access to Bardowie Loch. Crucially, Glasgow City Centre is just seven miles from the front door and the prestigious suburbs of Bearsden and Milngavie lie less than three miles to the west.





A CAPTIVATING HISTORY

Bardowie Castle is a category 'A' listed castle of significant international and historical importance which has undergone extensive restoration and upgrading resulting in one of the most magnificent family homes in Scotland.

The castle was originally owned by the once great Stirlingshire family of Galbraith, whose principal seats in the neighbourhood were Craigmaddie Castle in Baldernock and Gartconnel Castle in Kilpatrick. Both of these are now barely visible with only a few foundation stones apparent. The Galbraiths of Baldernock were the chiefs of the clan and their line ended with Janet Keith, wife of David Hamilton of Cadzow, ancestor of the Duke of Hamilton. The family of Bardowie are a younger branch of The Cadzows and they were endowed with the Baldernock lands, including Bardowie. There they remained until the early 16th century at which time it is believed that the main tower or stone keep was erected.

The early history of the Hamiltons is a common one in Scotland. They took their share in the various wars of their country, and when not thus employed spent

much of their time in feuds with their neighbours. In 1526 they had a quarrel with the Logans of Balvie in Kilpatrick which ended in John Hamilton being killed by them at Blairskaithe, not far from his castle at Bardowie. His son and successor, Allan Hamilton, met with a similar fate, being slain by his nearest neighbour,

Colin Campbell of Auchenbowie. In 1591 the succeeding laird of Bardowie had a serious quarrel with Walter Graham of Dougalston, another neighbour. Bardowie Castle has thus probably witnessed many a stormy scene, and no doubt the strength of its walls has been often tested. Robert Hamilton, 16th laird of Bardowie, was the last of the family in direct male lineage and on his death he was succeeded in the estate by his sister Elizabeth, wife of Thomas Buchanan of Spittal and Leny. The family thereupon incorporated Hamilton into their name. John Hamilton, the grandson of Elizabeth, occupied Bardowie for some time thereafter and in 1707, his sister Mary married the gallant Gregor Black Knee MacGregor of Glengyle, Rob Roy's nephew and Chieftan. Rob Roy and his nephew are believed to have stayed in the castle.



The Great Hall



South east elevation



Southerly views across the loch



LOVINGLY RESTORED

Bardowie Castle is a majestic period home formed around the original stone keep which dates from the early 16th century, together with substantial additions in the 17th and 18th centuries.

More recently, the current owners have thoroughly enjoyed raising their family here and during their ownership have meticulously restored and refurbished both internally and externally. Of particular note is the magnificent open-plan family room which is directly accessed from the kitchen, and where you can step straight into the walled garden with spectacular views across Bardowie Loch.

The works include the installation of modern insulation, under-floor heating, wiring, plumbing and engineered double glazed sash and case windows by Blairs Windows. There are internal vacuum points connected to the centralised turbine, fibre optic broadband, high end kitchen units, bathroom and en-suite sanitary ware. The painstaking refurbishment retains much of the original character yet at the same time beautifully embodies all the advantages of a substantial modern family home.

Features include flagstone flooring, a retractable drawbridge staircase leading to the original Great Hall dating to the mid 1500's.

Externally, the beautiful stonework is complimented by crow stepped gables and battlements along the roof line. Offering an atmospheric entertaining/dining experience, this impressive room features a high vaulted ceiling with curved oak beams, 24ft high ceilings and ancient stone carvings within the walls.

This is believed to be the oldest privately owned vaulted, oak beamed ceiling in Scotland and remains intact as it was some 500 years ago.

The floorplan provides a more detailed overview of the accommodation, however a brief summary - extensive family accommodation over three principal levels with the original stone staircase within the keep walls leading to the "Great Hall" within the Tower, which is home to what is understood to be the oldest oak beamed ceilings in Scotland.



The original keep dating back to 1566











LIVING SPACES

The accommodation is accessed via the reception hall with flagstone flooring and multi-vaulted ceiling with an adjoining snug. The traditional dining room featuring exposed 6 feet thick stone walls and barrelled ceiling. A WC and cloakroom lie off the main hall. The heart of the home is the expansive kitchen which opens to a dining area running the full depth of the original section of the Castle (40ft in length) featuring a stone carved fireplace housing a wood burning stove which also heats the water. The kitchen is formed around a large, central 'Chalon' island and includes hand painted, made to measure units, an electric Aga Range cooker, Belfast sink and adjoining scullery. There is access from the dining area to the garden.

Next to the kitchen is the large main family room which features full height windows, glass doors along two sides, a wall of original exposed stone and a further original stone staircase linking to the large utility room, with granite surfaces, underfloor heating and boot room.

From the main reception area, the sweeping stone staircase leads to the first floor (as does the retractable staircase within the original section) and this floor offers a large music/games room and formal drawing room features two almost floor to ceiling astragalled windows, cast iron arched fireplace, intricate plaster cornicing and more of the magnificent panoramic views across the Loch. The master suite comprises master bedroom, adjoining dressing room, en-suite bathroom with large double bath, his and hers sinks, open fireplace with stone mantle and an adjoining shower room with sauna. A second double bedroom completes this floor and the main staircase leads to the second floor with a further four double bedrooms, three of which feature en-suite facilities and two of which also have large dressing rooms. A rustic 'hidden' stone staircase leads to the original Keep which is the Great Hall. With walls six feet deep, this vast double height area was formerly two levels and the dividing floor rafters remain along with a turreted stairway leading to battlements which are now enclosed by the roof.



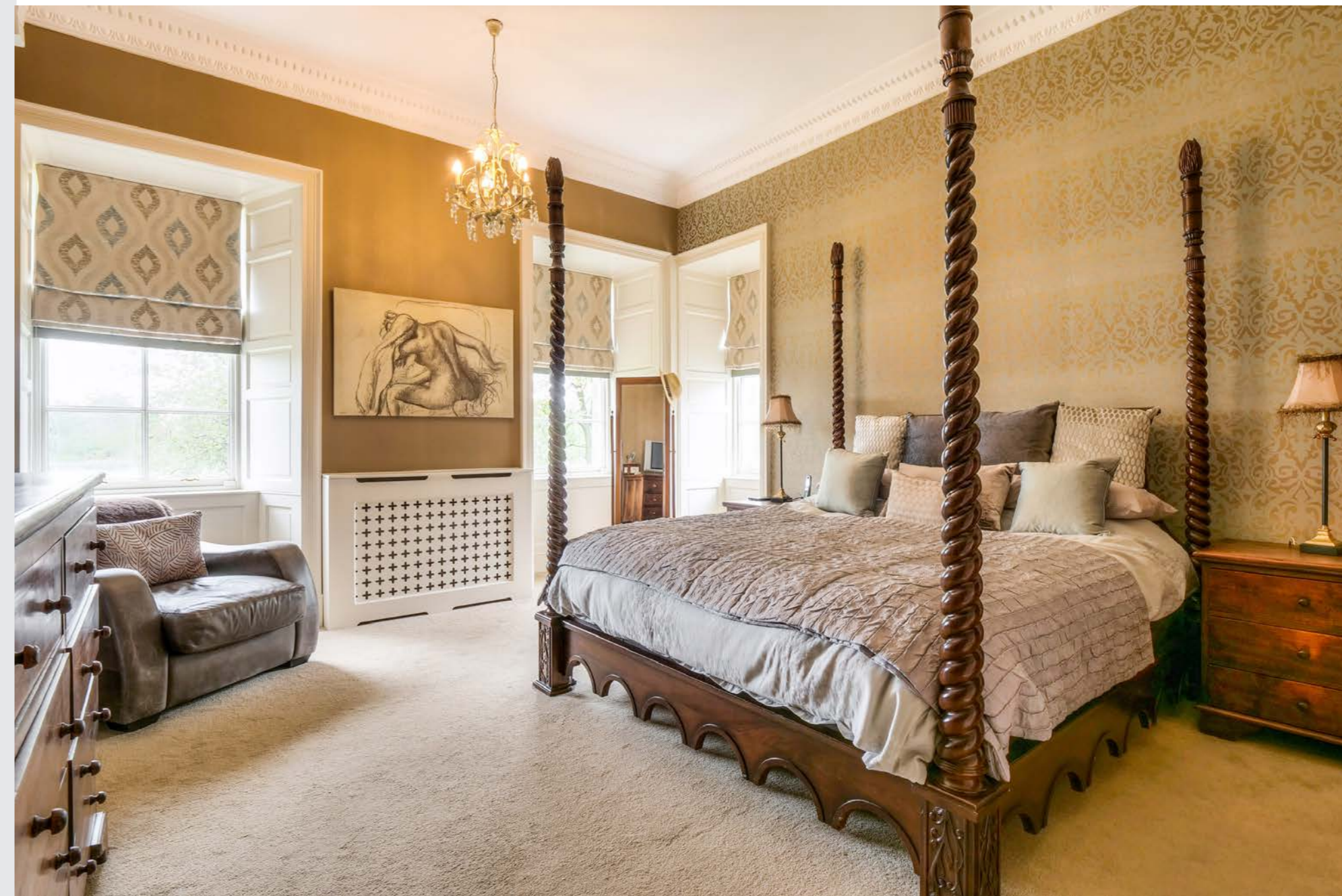
Make any occasion special when you dine by candlelight in the atmospheric vaulted dining room







The master suite is uncompromising in luxury, from the walk through dressing room to the central bath and sauna



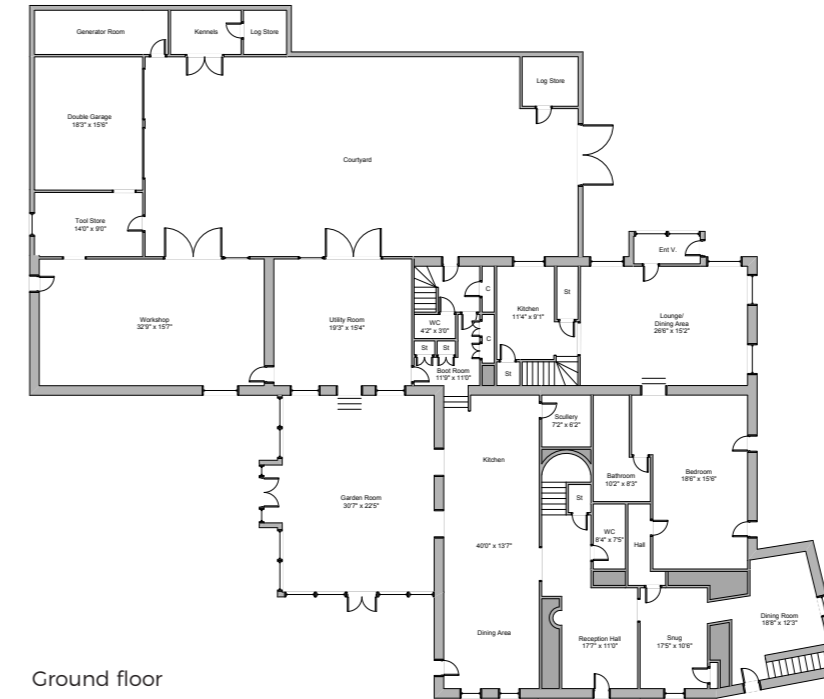
Master bedroom



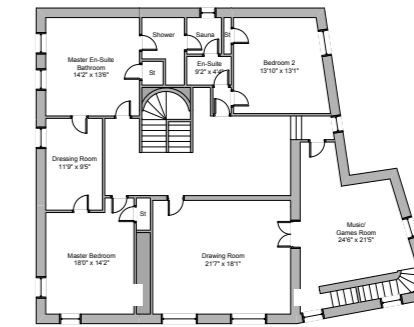




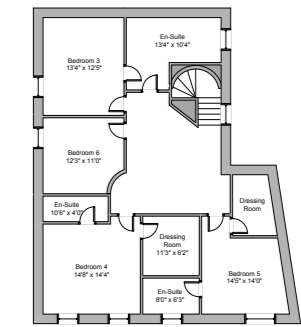
ACCOMMODATION & LAYOUT



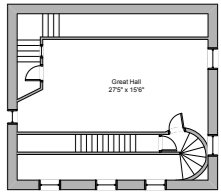
Ground floor



First floor



Second floor



Third floor



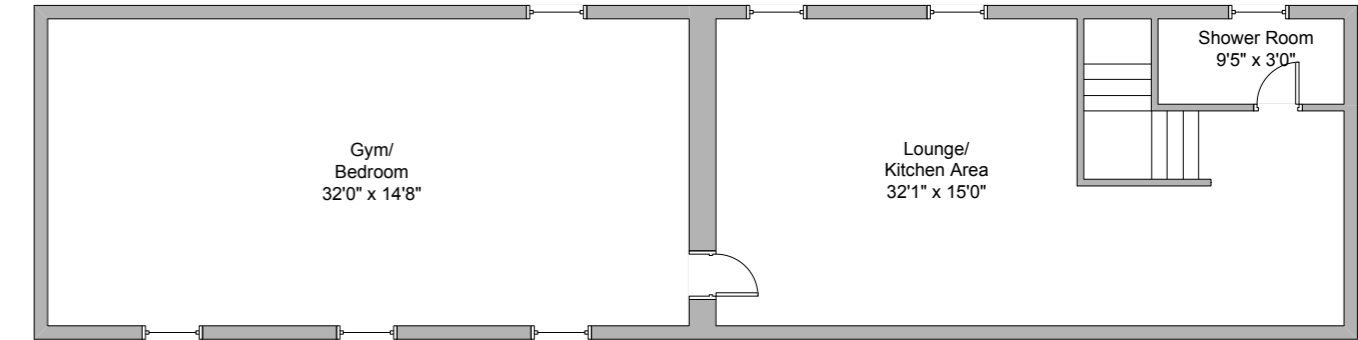




THE WEST WING

From the rear hall on the ground floor, stairs lead to a refurbished West Wing which comprises a self-contained apartment in the form of a lounge, open kitchen area, refitted shower room and a sizeable double bedroom which is currently utilised as a fully-equipped gymnasium. This area links to the main house and features its own door to the rear courtyard.

A larger integral self-contained two story apartment is accessed via the main house or via a separate entrance at the rear, and provides a comfortable living room, kitchen, two bedrooms, en-suite and bathroom. This is heated by a separate boiler and offers beautiful self contained accommodation for those who may have a dependant relative, teenager or staff.



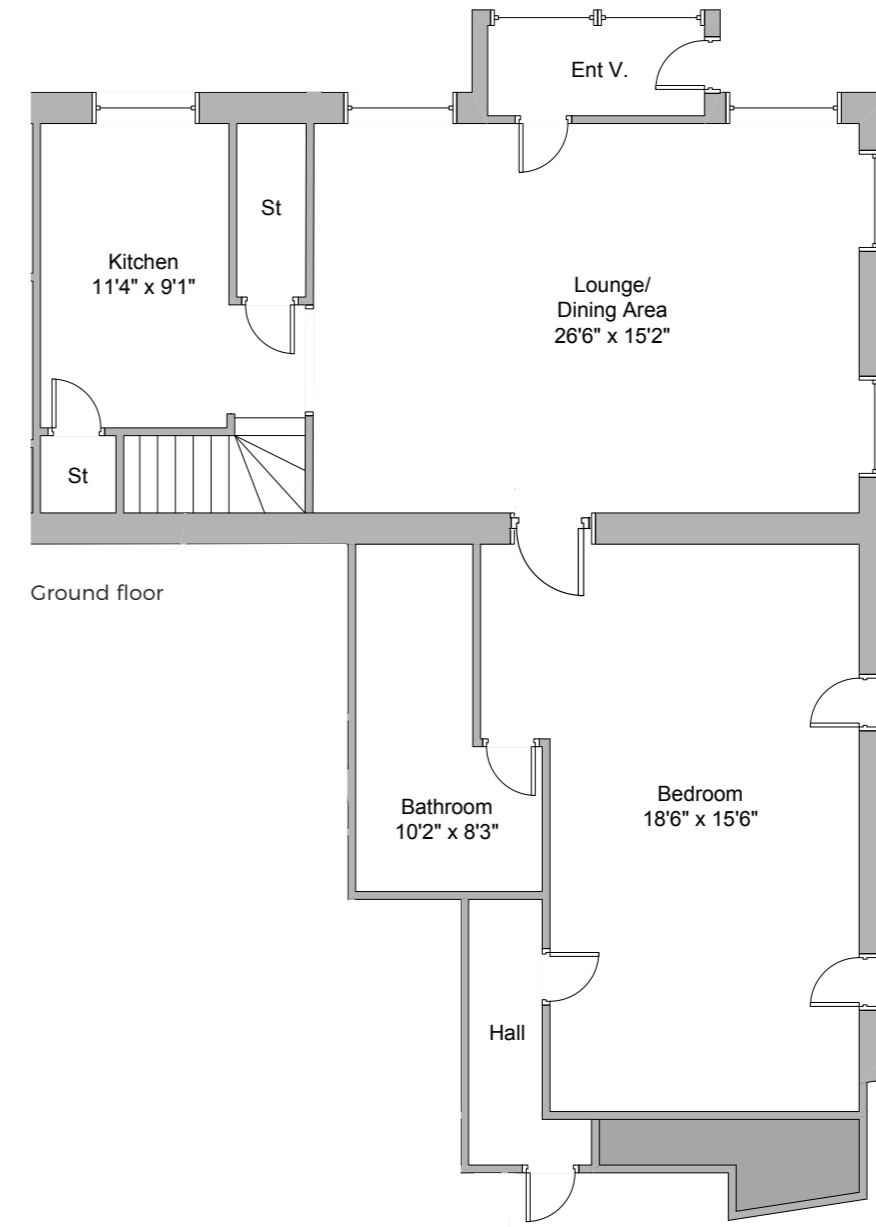
First floor

THE WEST WING

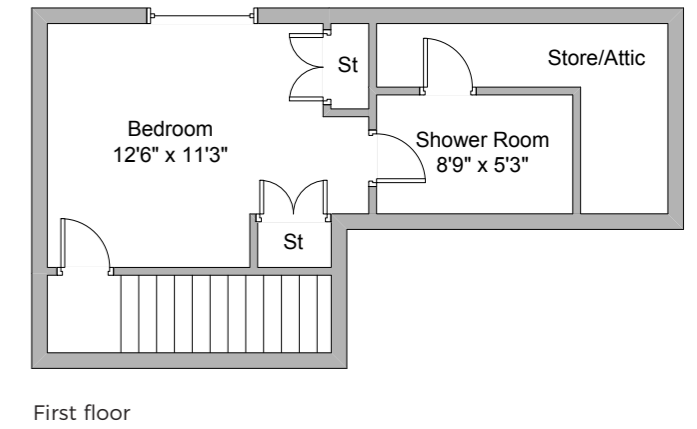




SELF CONTAINED APARTMENT



SELF CONTAINED APARTMENT





THE GROUNDS

Bardowie Castle enjoys an idyllic situation on the northern shores of Bardowie Loch surrounded by rolling countryside. The Castle lies at the end of the oldest lime tree-lined driveway in Scotland, is flood-lit in the evenings and enjoys private, lawned and wooded grounds with policies of some ten acres, or thereby.

The generous grounds occupy along the majority of the northern shore of the Loch and offer expanses of lawned gardens including the former orchard beyond which the topography of the land hints towards the original location of the castle's moat. There are boating, shooting and fishing rights, a recently resurfaced tennis court and a beautiful walled garden bordering the patio, almost on the waters edge. A summer house is currently utilised as

a water ski and sailing changing room and sits next to the jetty and the refurbished boat house sits at the side of the property together with French doors on the loch side and access door at the rear. The rear, enclosed courtyard is accessed via electric security gates and is home to original stone built log stores, tool store, two separate sizeable garages, a generator room, kennel and courtyard parking for several vehicles.

A great property to suit a variety of outdoor pursuits including sailing, fishing, canoeing, water skiing, shooting, quad biking, tennis etc.

Fibre optic broadband was installed within the last month and WIFI is available throughout the property.

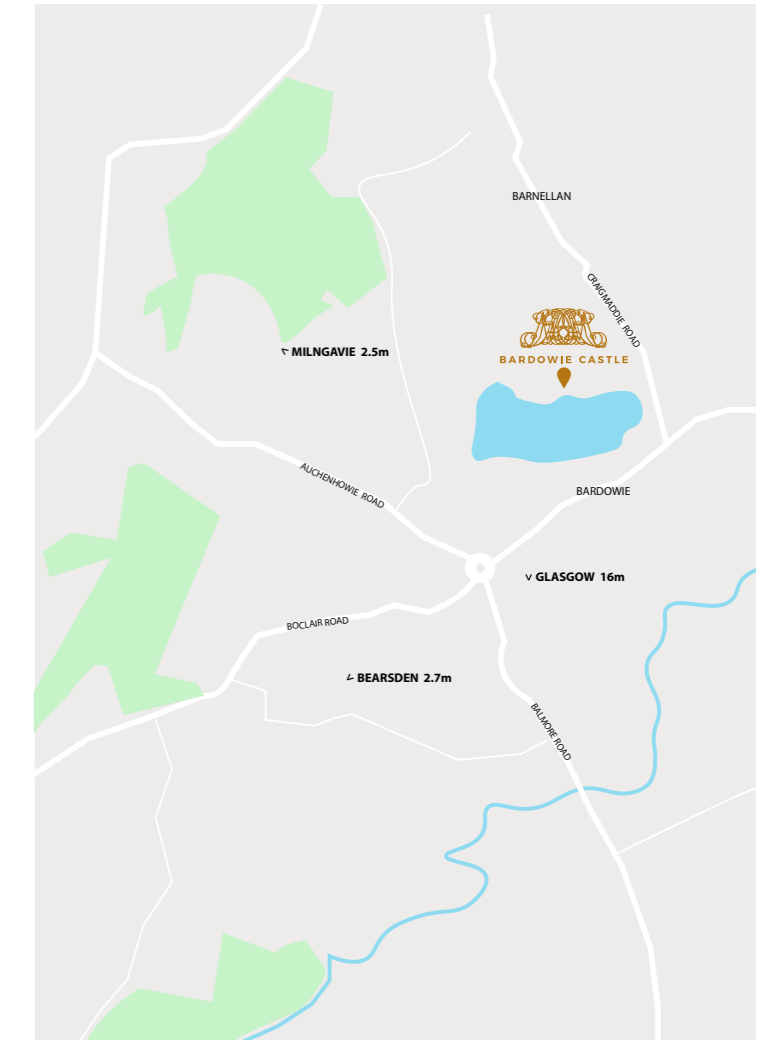


SURROUNDING AREA

The highly sought after hamlet of Bardowie is within close proximity of Glasgow City Centre approximately seven miles away and the nearby suburbs of Milngavie (two miles away) and Bearsden (approximately three miles) offer an extensive array of amenities including supermarkets, restaurants, sports clubs and train stations linking to Glasgow and Edinburgh. The area is served by excellent local schooling and is also a convenient destination for those wishing private school tuition with a choice of nearby schools in and around Glasgow including The High School of Glasgow, The Glasgow Academy, Kelvinside Academy, St. Aloysius and Hutchesons' Grammar.

Arterial road networks provide easy access to Stirling, Glasgow and Edinburgh and the location lies within easy reach of The Loch Lomond and The Trossachs National Park, Mugdock Country Park and all of Scotland's top golf courses. Motorway networks provide easy access to Glasgow and Edinburgh Airports, 12 miles and 45 miles respectively and the private Cumbernauld Airport, 16 miles.

For Sat Nav: **G62 6EY**





Bardowie Castle Boundary Plan





PROPERTY

T: 0141 570 0777

E: bearsdn@clydeproperty.co.uk

clydeproperty.co.uk

