

Finchale Close

Hendon
Sunderland
SR2 8AR



good life
sales & lettings



Finchale Close

£550 PCM

INTRODUCTION

AVAILABLE NOW!! UNFURNISHED WELL PRESENTED 2 BEDROOM HOUSE WITH CONSERVATORY.

ENTRANCE VESTIBULE

Entrance via white uPVC double-glazed door. Carpet flooring, open archway leading to lounge.

LOUNGE

Carpet flooring, electric fire, electric radiator. Door leading to kitchen. Open plan carpeted staircase to first floor landing. White uPVC double-glazed bay window. Grey curtains and blinds.

KITCHEN

Wooden floor, range of wall and floor units in a white high gloss finish with black work top. Red Metro splash back tiles between the units. Integrated electric oven, 4 ring electric hob and stainless steel extractor fan. Stainless steel circular sink with single drainer. Space for a washing machine. White uPVC double-glazed window looking out to conservatory, white uPVC door leading out to conservatory.

CONSERVATORY

Carpet flooring, white uPVC double-glazed windows looking over rear garden, double uPVC double-glazed doors leading out to rear garden. Electric fan. Roller blinds, wall lights.

FIRST FLOOR LANDING

Carpet flooring, 3 doors leading off, 2 to bedrooms and 1 to bathroom.

BEDROOM 1

Carpet flooring, electric radiator, white uPVC double-glazed window, curtains. Built-in wardrobes.

BEDROOM 2

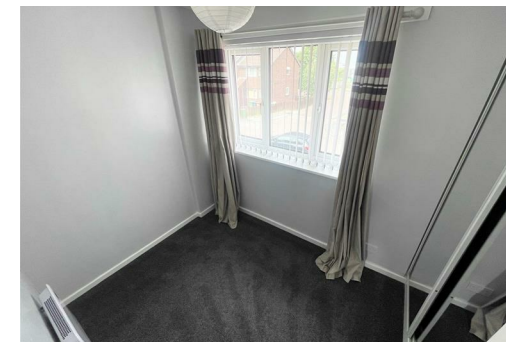
Carpet flooring, electric radiator, white uPVC double-glazed window with blinds and curtains. Fitted wardrobe with mirrored sliding doors.

BATHROOM

Grey vinyl flooring, electric radiator. White toilet with low level cistern, sink with single pedestal and chrome taps, bath with panel, chrome taps, shower over with shower rail and curtains. Storage shelves. Fully tiled to the walls.

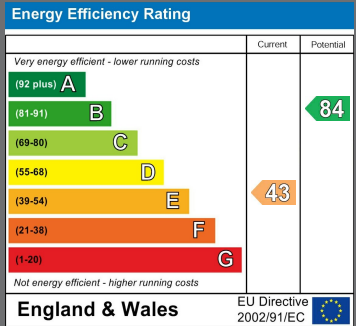
EXTERNALLY

The property benefits from a rear garden with a area laid to lawn.



Local Authority
Sunderland

Council Tax Band
A



Agents Note: Whilst every care has been taken to prepare these particulars, they are for guidance purposes only. All measurements are approximate and are for general guidance purposes only and whilst every care has been taken to ensure their accuracy, they should not be relied upon and potential buyers/tenants are advised to recheck the measurements



Good Life Homes - Lettings

46 Windsor Terrace
Sunderland
Tyne and Wear
SR2 9QF

Contact

0191 565 6655

info@goodlifelifehomes.co.uk

www.goodlifelifehomes.co.uk

good life 
sales & lettings