

Southside Gardens
South Hylton
Sunderland
SR4 0NP



Southside Gardens

£198,000

INTRODUCTION

ATTRACTIVE 3 BEDROOM SEMI-DETACHED HOME - SENSIBLY PRICED - DRIVEWAY & GARAGE - PLEASANT REAR GARDEN - 3 DOUBLE BEDROOMS WITH EN SUITE TO MASTER - SEPARATE LOUNGE/DINING ROOM - NO CHAIN - SOUGHT AFTER DEVELOPMENT...

ENTRANCE HALL

Entrance via GRP double-glazed door. Laminate wood-effect flooring, radiator. Door leading off to TV room or home office, door leading off to lounge, door leading off to kitchen, door leading off to WC.

TV ROOM/HOME OFFICE/DINING ROOM

Laminate wood-effect flooring, radiator, front facing white uPVC double-glazed window. Under stairs cupboard providing some storage.

LOUNGE

Laminate wood-effect flooring, double radiator, white uPVC double-glazed patio doors with built-in blinds leading out to rear patio and garden.

W C

Vinyl tile-effect flooring, sink with single pedestal and chrome tap, toilet with low level cistern, radiator, extractor fan.

KITCHEN

Ceramic tile flooring, radiator, rear facing white uPVC double-glazed window, GRP double-glazed door with privacy glass leading out to rear patio and garden. Fitted kitchen with a range of wall and floor units in a black high gloss finish with complementary laminate wood-effect work surface. Stainless steel sink with bowl and a half, single drainer and Monobloc tap, integrated double electric oven, 4 ring gas hob and feature extractor chimney, integrated fridge/freezer, space and plumbing for a washing machine. Recessed lights to ceiling.

FIRST FLOOR LANDING

Built-in cupboard which provides storage, 4 doors leading off, 3 to bedrooms and 1 to bathroom.

BATHROOM

Tiled flooring, radiator, front facing white uPVC double-glazed window with privacy glass. White toilet with low level cistern, white sink with single pedestal and chrome taps, white bath with panel, chrome tap and showerhead attachment. Electric shaving point, recessed lights to ceiling. Extractor fan.

MASTER BEDROOM

Good size master bedroom with carpet flooring, radiator, 2 front facing white uPVC double-glazed windows. Double built-in wardrobes. Door leading off to en suite.

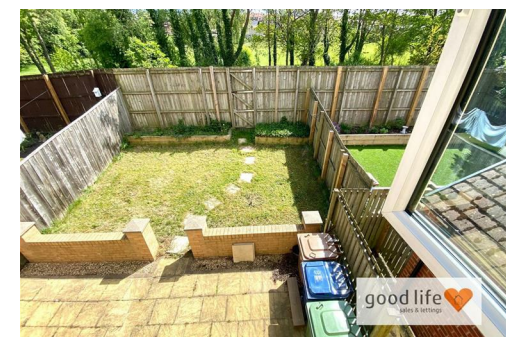
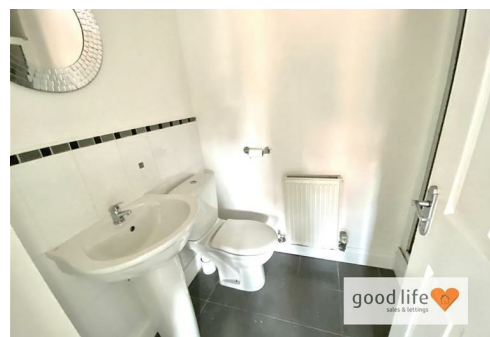
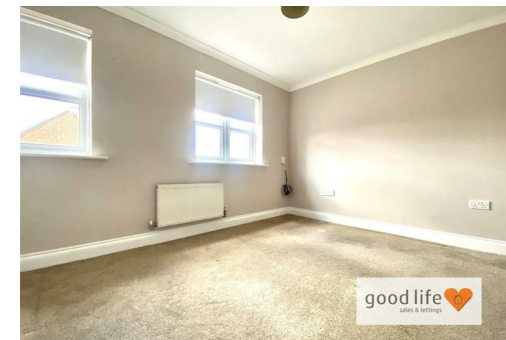
EN SUITE

Tiled flooring, radiator, white toilet with low level cistern, white sink with single pedestal and chrome tap, and single shower cubicle with folding glass doors and shower fed from the main hot water system. Electric shaving point.

BEDROOM 2

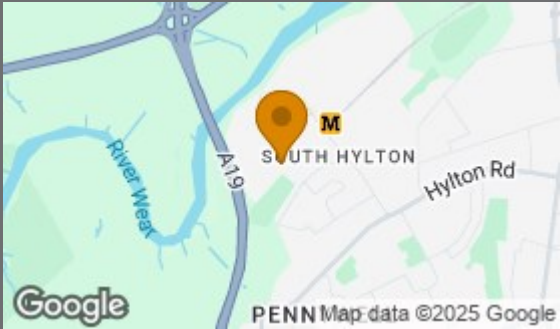
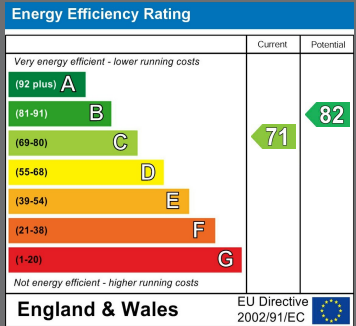
Also a double bedroom

Carpet flooring, radiator, white uPVC double-glazed window rear facing with lovely views.



Local Authority
Sunderland

Council Tax Band
B



Agents Note: Whilst every care has been taken to prepare these particulars, they are for guidance purposes only. All measurements are approximate and are for general guidance purposes only and whilst every care has been taken to ensure their accuracy, they should not be relied upon and potential buyers/tenants are advised to recheck the measurements



Good Life Homes - Sales

46 Windsor Terrace
Sunderland
Tyne and Wear
SR2 9QF



Contact

0191 565 6655

info@goodlifelifehomes.co.uk

www.goodlifelifehomes.co.uk

good life 
sales & lettings