

Pensher Street
Millfield
Sunderland
SR4 7EB



Pensher Street

£650

INTRODUCTION

TO LET UNFURNISHED - AVAILABLE NOW

- 2 BEDROOMS - RECENTLY UPDATED & WELL PRESENTED - CLOSE TO CHESTER RD SHOPS- CLOSE TO UNIVERSITY & HOSPITAL...

ENTRANCE VESTIBULE

Entrance via white uPVC double-glazed door. Electric meter, electric consumer unit/ Door leading off to entrance hall.

ENTRANCE HALL

Laminate wood-effect flooring, radiator, loft hatch 2 doors leading off to, bedroom 1 and lounge.

BEDROOM 1

Carpet flooring, double radiator, front facing white uPVC double-glazed window, roller shutter blind. 2 fitted wardrobes either side of the chimney breast with sliding doors. Large double bed.

LOUNGE

Laminate wood-effect flooring, double radiator, rear facing white uPVC double-glazed window. Door leading off to kitchen, door leading off to entrance hall, door leading off to bedroom 2.

BEDROOM 2

Small double or large single.

Laminate wood-effect flooring, radiator, rear facing white uPVC double-glazed window with views over yard.

KITCHEN

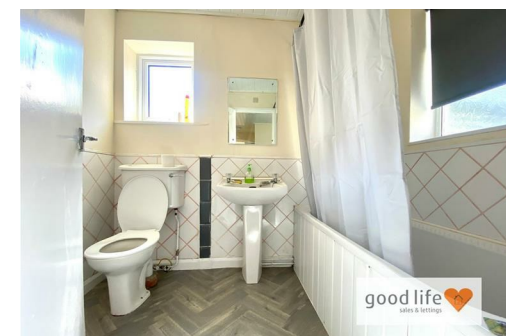
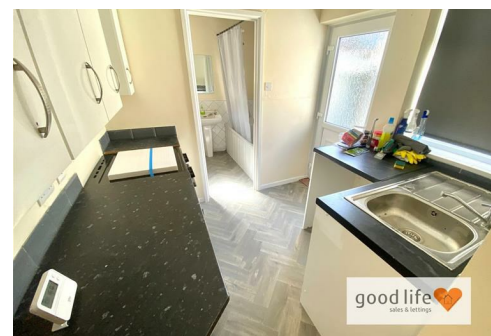
Vinyl wood effect flooring, radiator, wall mounted combi boiler, rear facing white uPVC double-glazed window, white uPVC double-glazed door leading out to rear yard, door leading off to bathroom. Modern fitted kitchen with a range of wall and floor units in a white finish with contrasting laminate work surface. Stainless steel sink with single bowl, single drainer and matching monobloc tap. Space and plumbing for a washing machine, under bench space for fridge, electric cooker with 4 ring ceramic hob and double oven.

BATHROOM

Vinyl tile effect flooring, radiator, 2 white uPVC double-glazed windows, 1 rear and 1 side facing with privacy glass. White bath with panel, chrome taps with showerhead attachment, white sink with single pedestal and chrome taps, white toilet with low level cistern.

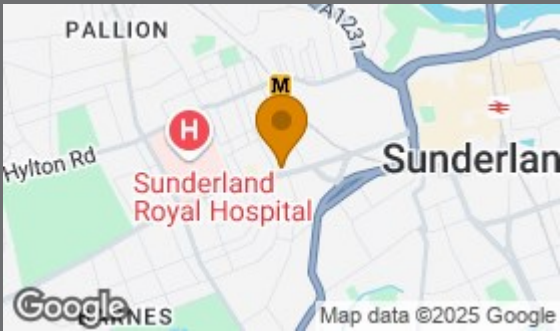
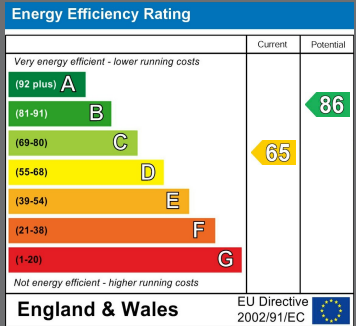
EXTERNALLY

Roller shutter remote door with vehicle access. On street parking also.



Local Authority
Sunderland

Council Tax Band
A



Agents Note: Whilst every care has been taken to prepare these particulars, they are for guidance purposes only. All measurements are approximate and are for general guidance purposes only and whilst every care has been taken to ensure their accuracy, they should not be relied upon and potential buyers/tenants are advised to recheck the measurements



Good Life Homes - Lettings

46 Windsor Terrace
Sunderland
Tyne and Wear
SR2 9QF



Contact

0191 565 6655

info@goodlifelifehomes.co.uk

www.goodlifelifehomes.co.uk

good life
sales & lettings

