

Cliffe Terrace
Ryhope Village
Sunderland
SR2 0NN



good life 
sales & lettings

Cliffe Terrace

£225,000

INTRODUCTION

VILLAGE 4 BED DETACHED HOME IN GREAT POSITION - ONE OF ONLY 2 BUILT IN SMALL DEVELOPMENT - SOME GENERAL UPDATING REQUIRED - GENEROUS GARDEN PLOT SOUTH FACING TO REAR
- MULTI-CAR PARKING TO FRONT AND POTENTIAL FOR GARAGE
- FREEHOLD & NO CHAIN - RARE OPPORTUNITY !

ENTRANCE HALL

Entrance via glazed door into entrance hall. Carpet flooring, radiator, double doors leading into lounge, door leading into separate dining room, door leading into kitchen.

LOUNGE

A lovely size lounge with carpet flooring, wooden framed double-glazed bow window to the front, radiator, white uPVC double-glazed sliding doors and leading out to the rear patio and garden. Feature fire surround in the centre of the room in a wood-effect finish with quartz back and hearth and built-in coal-effect gas fire. Double doors leading back through into entrance hall. This is a lovely large room with lovely views over the garden to one side.

KITCHEN

Located to the front of the property immediately to the right as you enter the entrance hall. The kitchen has vinyl wood-effect flooring, 2 radiators, front facing wooden framed double-glazed window with pleasant views over the front garden, serving hatch to the rear of the kitchen which leads into the dining room. Fitted kitchen with a range of wall and floor units, stainless steel sink with single bowl single drainer and monobloc tap. Space and plumbing for a washing machine, space for under bench fridge, space for tall fridge/freezer, space for dryer, integrated electric oven with 4 ring gas hob.

DINING ROOM

Carpet flooring, radiator, open plan staircase leading to first floor landing, built-in cupboard providing storage space under the stairs. 3 wooden framed double-glazed windows looking out over the rear garden.

FIRST FLOOR LANDING

Built-in cupboard providing storage and also the location of modern gas Combi boiler, 6 doors leading off, 1 to WC, 1 to bathroom and 4 to bedrooms.

BEDROOM 1

Good size double bedroom.

Carpet flooring, radiator, 2 rear facing wooden framed double-glazed windows with views over the garden. Fitted wardrobes and matching drawers.

BEDROOM 4

Carpet flooring, radiator, front facing wooden framed double-glazed window. This is a smallest bedroom but would accommodate a double bed.

BEDROOM 2

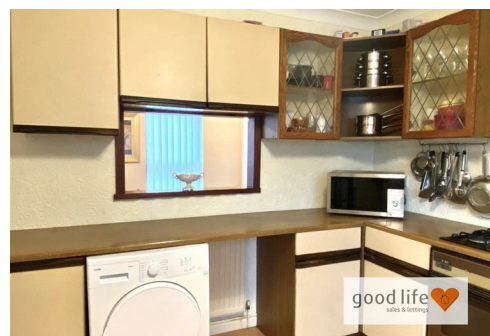
This is also a good size double bedroom.

Carpet flooring, radiator, 2 wooden framed double-glazed windows, front and side facing.

BEDROOM 3

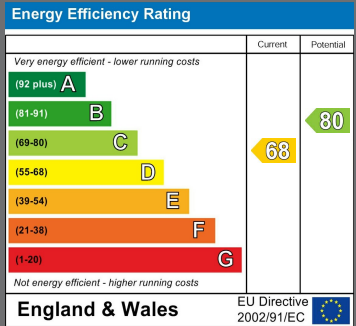
This is also a good size double.

Carpet flooring, radiator, 2 rear facing wooden framed double-glazed windows.



Local Authority
Sunderland

Council Tax Band
D



Agents Note: Whilst every care has been taken to prepare these particulars, they are for guidance purposes only. All measurements are approximate and are for general guidance purposes only and whilst every care has been taken to ensure their accuracy, they should not be relied upon and potential buyers/tenants are advised to recheck the measurements



Contact

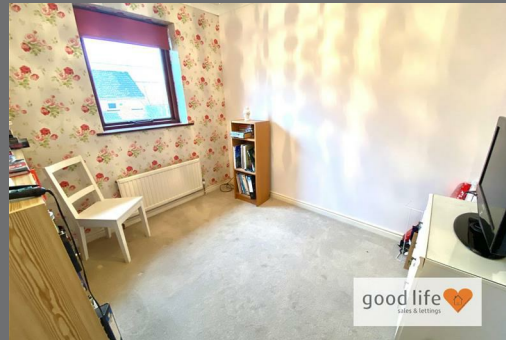
0191 565 6655

info@goodlifelifehomes.co.uk

www.goodlifelifehomes.co.uk

Good Life Homes - Sales

46 Windsor Terrace
Sunderland
Tyne and Wear
SR2 9QF



good life 
sales & lettings