

Edgmond Court
Sunderland
SR2 0DY



Edgmond Court

£29,995

INTRODUCTION

REQUIRING MODERNISATION & REFURBISHMENT - 2 BEDROOM SECOND FLOOR APARTMENT - ALSO HAS SEPARATE GARAGE WITHIN BLOCK - LEASEHOLD - WELL MAINTAINED BLOCK COMMON AREAS
- NO CHAIN ...

ENTRANCE HALL

Stairs leading to first floor with door leading to the apartment. Built-in cupboard, 4 doors leading off, 2 to bedrooms, 1 to bathroom and 1 to lounge.

BEDROOM 1

Rear facing white uPVC double-glazed window with pleasant views over greenery and built-in double wardrobe space.

BEDROOM 2

Rear facing white uPVC double-glazed window with pleasant views over greenery, built-in cupboard providing some storage and also the location of the hot water Ellison tank.

BATHROOM

White bath, white sink with chrome taps, white toilet with mid-range cistern, electric wall heater.

LOUNGE

Good size lounge.

White uPVC double-glazed window overlooking pleasant greenery, door leading off to kitchen.

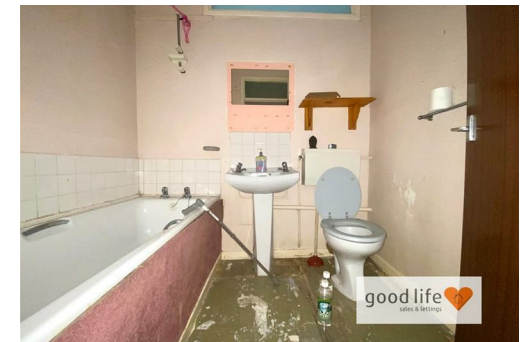
KITCHEN

Rear facing white uPVC double-glazed window, wall mounted electric heater. Part fitted kitchen with a range of wall and floor units, stainless steel sink with chrome tap, electric oven power point.

EXTERNALLY

Secure entrance into Edgmond Court.

Separate single garage located in the block.

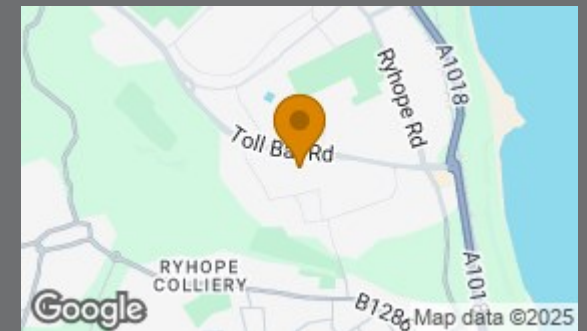


Local Authority
Sunderland

Council Tax Band
A

Energy Efficiency Rating		
	Current	Potential
<i>Very energy efficient - lower running costs</i>		
(92 plus) A		
(81-91) B		
(69-80) C		
(55-68) D		
(39-54) E		
(21-38) F		
(1-20) G		
<i>Not energy efficient - higher running costs</i>		
	72	79

England & Wales EU Directive 2002/91/EC



Agents Note: Whilst every care has been taken to prepare these particulars, they are for guidance purposes only. All measurements are approximate and are for general guidance purposes only and whilst every care has been taken to ensure their accuracy, they should not be relied upon and potential buyers/tenants are advised to recheck the measurements



Contact

0191 565 6655

info@goodlifehomes.co.uk

www.goodlifehomes.co.uk

Good Life Homes - Sales

46 Windsor Terrace Ryhope Road
Sunderland
Tyne and Wear
SR2 9QF

