

Helena House
Albert Court
Sunderland
SR2 7LL



Helena House

£95,000

INTRODUCTION

THIS IS THE LARGER STYLE 2 DOUBLE BEDROOM PLUS EN SUITE 3RD FLOOR APARTMENT ON THIS SOUGHT AFTER DEVELOPMENT - ALSO HAS LARGER LOUNGE & DINING KITCHEN - EN SUITE + SEPARATE BATHROOM - PARKING VIA REMOTE GATES - TERRIFIC LOCATION WALKING DISTANCE TO CITY CENTRE, UNIVERSITY, METRO - BUY TO LET POTENTIAL £700pcm.

ENTRANCE HALL

Laminate wood-effect flooring, radiator, 4 doors leading off, 1 to lounge, 1 to bathroom and 1 to bedroom 1 and 1 to bedroom 2. Built-in cupboard provides storage and also houses the central heating boiler system.

BATHROOM

Carpet flooring, radiator, white sink with single pedestal and chrome taps, white toilet with low level cistern, white bath with chrome taps and wood-effect panel, electric shaving point, extractor fan.

BEDROOM 2

Carpet flooring, radiator, wooden-framed double-glazed windows with elevated views. This is a large double bedroom.

BEDROOM 1

Measurements take at widest points.

Carpet flooring, radiator, wooden-framed double-glazed window with elevated views. Door leading off to en suite.

EN SUITE

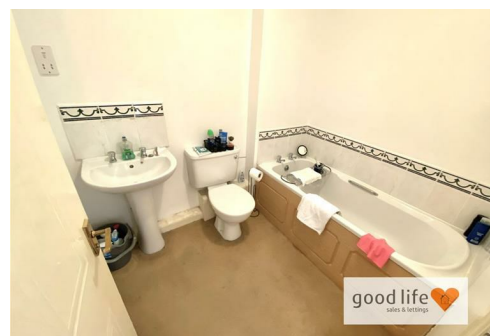
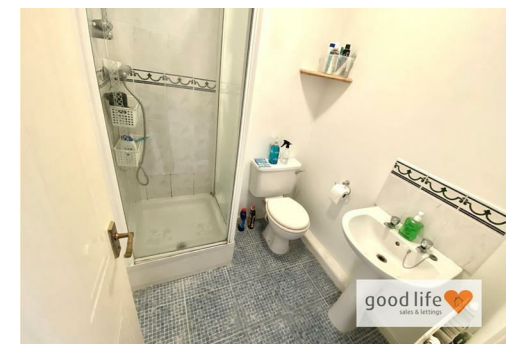
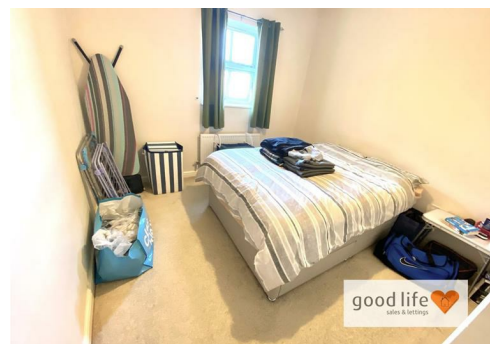
Tiled flooring, radiator, toilet with low level cistern, white sink with single pedestal and chrome taps, electric shaving point, shower cubicle with pivot door and shower fed from the main hot water system. The area around the shower is finished in a ceramic tile. Extractor fan.

LOUNGE

A very large lounge which has a lovely bay window with wooden-framed double-glazed units and views. Double and single radiator, decorative fire surround with electric fire insert. Door leading off to entrance hall, door leading to kitchen.

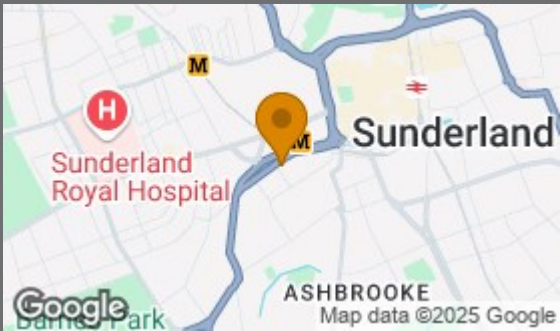
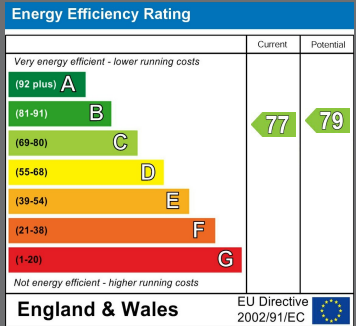
KITCHEN

Tiled flooring, radiator, wooden-framed double-glazed window with elevated views. Fitted kitchen with a range of wall and floor units in a blue finish with contrasting laminate wood-effect work surfaces. Integrated electric oven, 4 ring gas hob and integrated extractor, integrated washing machine, space for tall fridge/freezer, stainless steel sink with bowl and a half, single drainer and matching Monobloc tap. Space for kitchen table and chairs.



Local Authority

Council Tax Band
C



Agents Note: Whilst every care has been taken to prepare these particulars, they are for guidance purposes only. All measurements are approximate and are for general guidance purposes only and whilst every care has been taken to ensure their accuracy, they should not be relied upon and potential buyers/tenants are advised to recheck the measurements



Good Life Homes - Sales

46 Windsor Terrace
Sunderland
Tyne and Wear
SR2 9QF

Contact

0191 565 6655

info@goodlifelifehomes.co.uk

www.goodlifelifehomes.co.uk

good life 
sales & lettings