

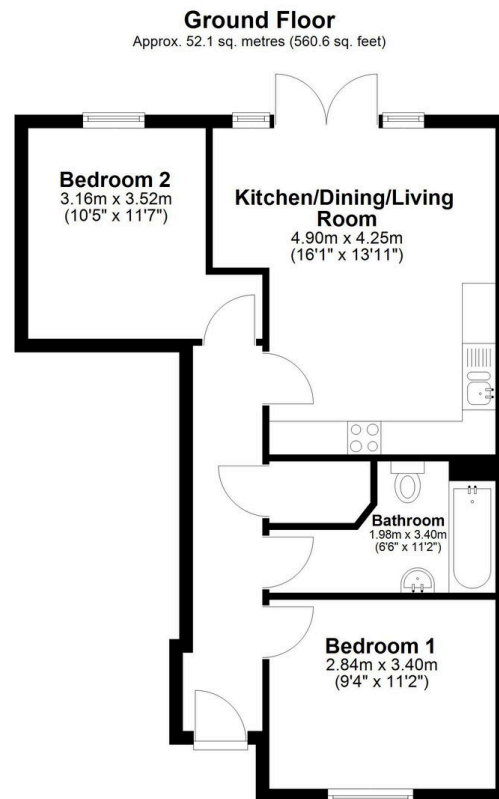
Sarah Grace Court, New Road, St. Ives, PE27 5DS

Offers Over £240,000

2 1 1



- Modern ground floor apartment in a quiet, well-kept secure gated development
- Two bedrooms, perfect for guests or a home office
- Gated and secure allocated parking space
- Share of freehold offering long-term peace of mind
- Virtual tour available upon request
- Open-plan kitchen, dining and living space for easy entertaining
- Private south-facing courtyard garden, ideal for sunny afternoons
- Built in 2015 with a long 999-year lease
- Easy access to guided busway and Huntingdon Station
- EPC Rating C/74



Total area: approx. 52.1 sq. metres (560.6 sq. feet)

****If Calling to Enquire - Quote ref KP0855 Sarah Grace Court**** - Modern two-bedroom ground floor apartment with private south-facing garden and allocated parking – perfectly positioned for easy, low-maintenance living!