

## Hemingford Lodge, London Road, St. Ives, PE27 5EU

Guide Price £145,000

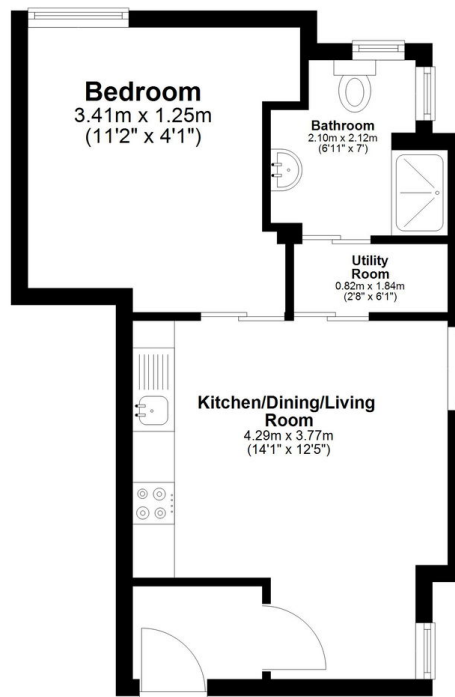
1 bed 1 bath 1 car



- Modern Ground Floor Apartment
- Open Plan Living Accommodation And Kitchen
- Allocated Parking Space
- Convenient Road Access To Cambridge
- Short Drive From Huntingdon Train Station
- One Bedroom
- Separate Utility Space
- Located South Of The River
- Walking Distance To Town Centre And Guided Bus Route
- EPC Rating C/78

### Ground Floor

Approx. 31.1 sq. metres (335.1 sq. feet)



Total area: approx. 31.1 sq. metres (335.1 sq. feet)

**\*\*If Calling to Enquire - Quote ref KP0855 - Hemingford Lodge\*\***

Modern one bedroom ground floor apartment, situated south of the river in St Ives. Within easy access of the town centre, Guided bus way and many amenities.