



HIGHVIEW

Vigo | DA13 0TQ

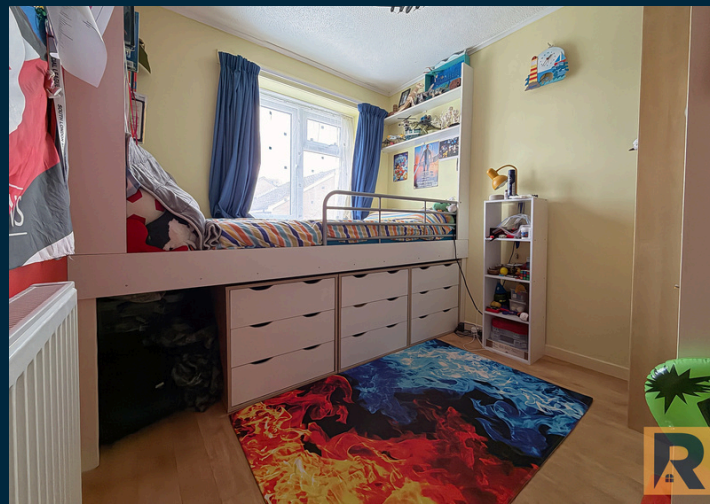




The sought-after village of Vigo provides a peaceful setting whilst being within easy reach of amenities. The proximity to Trosley Country Park, spanning over 100 acres, offers endless opportunities for walking, recreation, and enjoying nature right on your doorstep. There are also local shops, community facilities and good connections to the M20/M26/A2 motorways, numerous local schools, and the nearby train stations at Borough Green and Meopham.

Located along a walkway setting within the charming village of Vigo, this lovely 3 bedroom terraced home is approached by an entrance porch that leads into the living room, providing a comfortable space for relaxation. The generous refitted kitchen breakfast room is open plan to the wonderful addition of the conservatory, offering a bright and versatile space which is perfect for entertaining. Upstairs, you will find three well proportioned bedrooms, providing comfortable accommodation. A family bathroom completes the first floor.

Stepping outside, the property features a landscaped garden and for parking or additional storage, a garage en-bloc is included.



Ground Floor

Entrance Porch

Living Room - 14 x 13'1

Kitchen/Breakfast Room - 14 x 10'11

Conservatory - 13'3 x 8'5

First Floor

Landing

Bedroom 1 - 14 x 8'8

Bedroom 2 - 8'11 x 7'9

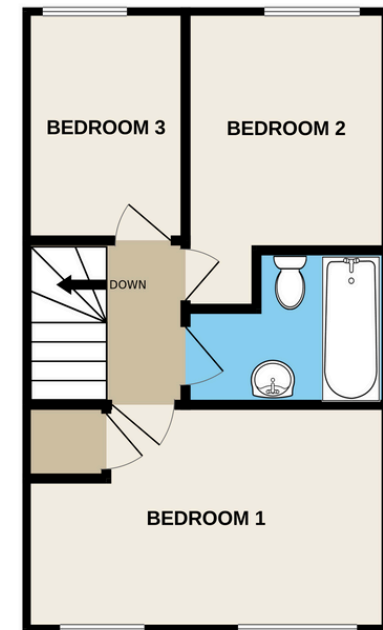
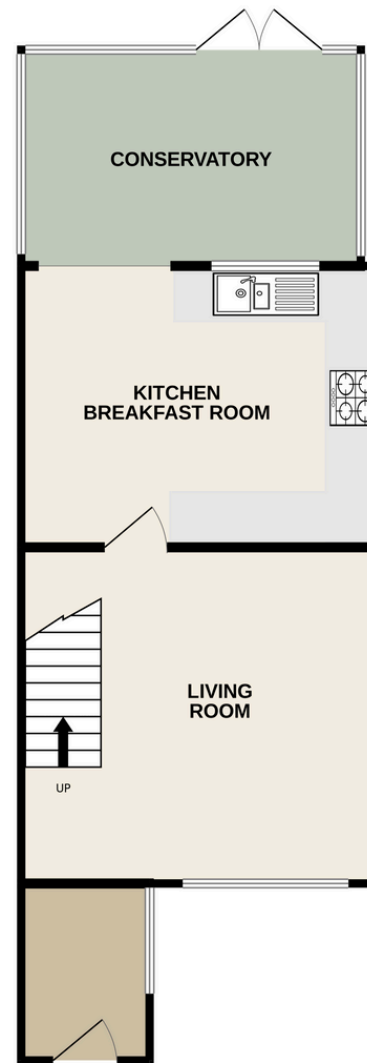
Bedroom 3 - 8'11 x 5'10

Bathroom

Outside

Private rear Garden

Garage En-Bloc





01732 647009



@sreynoldsrealestate

www.stuartreynolds.exp.uk.com