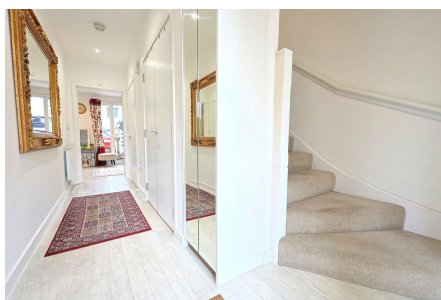


Lacey Drive, Edgware, HA8

£700,000

 4  2  2



Nestled in the desirable area of Lacey Drive, this contemporary four-bedroom two bathroom townhouse is offered perfectly for all types of buyers.

This is located in the popular Edgware Green Development. Upon entering, there is a bright and modern interior that flows seamlessly throughout.

The property has two well-appointed reception rooms, four bedrooms, an en-suite, family bathroom and a separate fitted kitchen.

Features include a separate office/study/guest cloakroom, parking and a south facing private garden private garden.

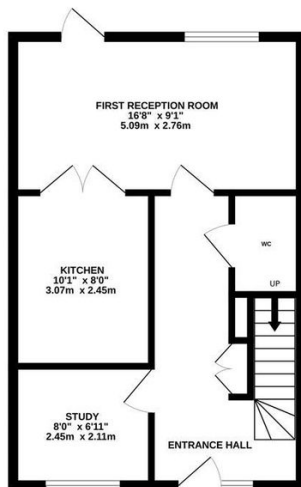
Stanmore Station is 0.7 Miles away and Edgware Station is within a 1 mile radius.

Call Benjamin Stevens to view now!

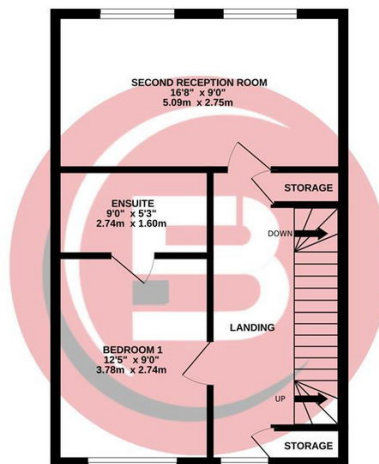
Key Features

- Four Bedrooms
- Great Condition
- Allocated Parking
- Popular Edgware Green Development
- Freehold
- End of Terrace Townhouse
- Two Reception Rooms
- South Facing Private Garden
- Ideal for a family looking to upsize
- Study Area

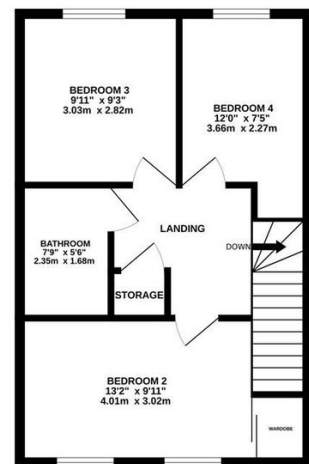
GROUND FLOOR
434 sq.ft. (40.4 sq.m.) approx.



1ST FLOOR
434 sq.ft. (40.4 sq.m.) approx.



2ND FLOOR
434 sq.ft. (40.4 sq.m.) approx.



TOTAL FLOOR AREA : 1303 sq.ft. (121.1 sq.m.) approx.

Whilst every attempt has been made to ensure the accuracy of the floorplan contained here, measurements of doors, windows, rooms and any other items are approximate and no responsibility is taken for any error, omission or mis-statement. This plan is for illustrative purposes only and should be used as such by any prospective purchaser. The services, systems and appliances shown have not been tested and no guarantee as to their operability or efficiency can be given.

Made with Metropix ©2025