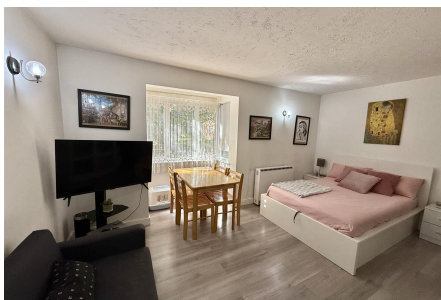


Pasteur Close, Colindale, NW9

Guide Price £170,000

1 1 1



A Chain Free Share Of Freehold Ground Floor Studio Apartment for sale in the heart of Colindale! This property comprises a spacious bedroom/reception room with a kitchen and a separate family bathroom. The features of this property are it's allocated parking, communal gardens and is walking distance to local transport links/shopping. Call Benjamin Stevens sole agents to book in a viewing!

Key Features

- CHAIN FREE
- Studio Flat
- Separate Bathroom
- Great Location
- Close to local transport links/shopping
- Allocated Parking
- Ground Floor
- Ideal for first time buyers/investors
- SHARE OF FREEHOLD
- Ideal for a BTL

GROUND FLOOR
303 sq.ft. (28.1 sq.m.) approx.



STUDIO FLAT

TOTAL FLOOR AREA : 303 sq.ft. (28.1 sq.m.) approx.

Whilst every attempt has been made to ensure the accuracy of the floorplan contained here, measurements of doors, windows, rooms and any other items are approximate and no responsibility is taken for any error, omission or mis-statement. This plan is for illustrative purposes only and should be used as such by any prospective purchaser. The services, systems and appliances shown have not been tested and no guarantee as to their operability or efficiency can be given.
Made with Metropix i5025