

## Regents Court, Stonegrove, Edgware, HA8

Guide Price £350,000

 2  1  1



A chain free, first floor two bedroom flat in a much sought after location in Edgware is available to view now!

This property boast two double bedrooms, a spacious living room and kitchen. The accommodation also has a good sized bathroom & plenty of storage.

Features include a share of freehold, a long lease, garage en-bloc & communal gardens.

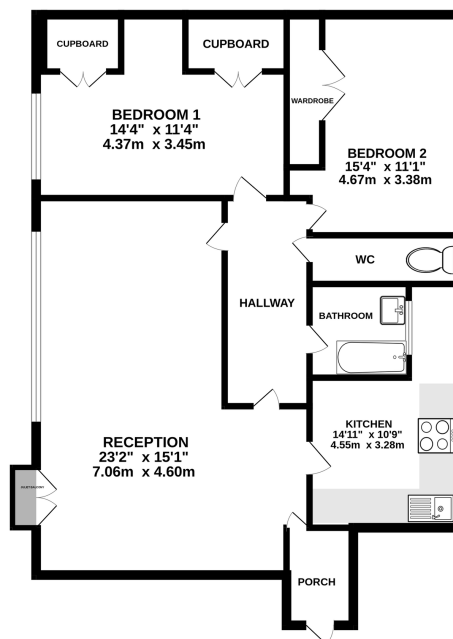
This property is a five minute walk to Stanmore station and 10 minute walk to Edgware tube station/shops.

Call Benjamin Stevens to view!

## Key Features

- Chain Free
- Two Double Bedrooms
- Share of Freehold
- Seperate Kitchen
- Long Lease over 900 years
- Garage En-Bloc
- Communal Gardens
- Within the Eruv
- Ideal first time buy/investment
- Walking distance to local transport/shops

TOP FLOOR  
882 sq.ft. (81.9 sq.m.) approx.



TWO BEDROOM FIRST FLOOR FLAT

TOTAL FLOOR AREA: 882 sq ft. (81.9 sq.m.) approx.

While every attempt has been made to ensure the accuracy of the floorplan contained herein, measurements of doors, windows, rooms and any other items are approximate and no responsibility is taken for any error, omission or misstatement. This plan is for illustrative purposes only and should be used as such by any prospective purchaser. The services, fixtures and appliances shown have not been tested and no guarantee is given as to their operation or efficiency and as given. Made with Metropix (2020).