



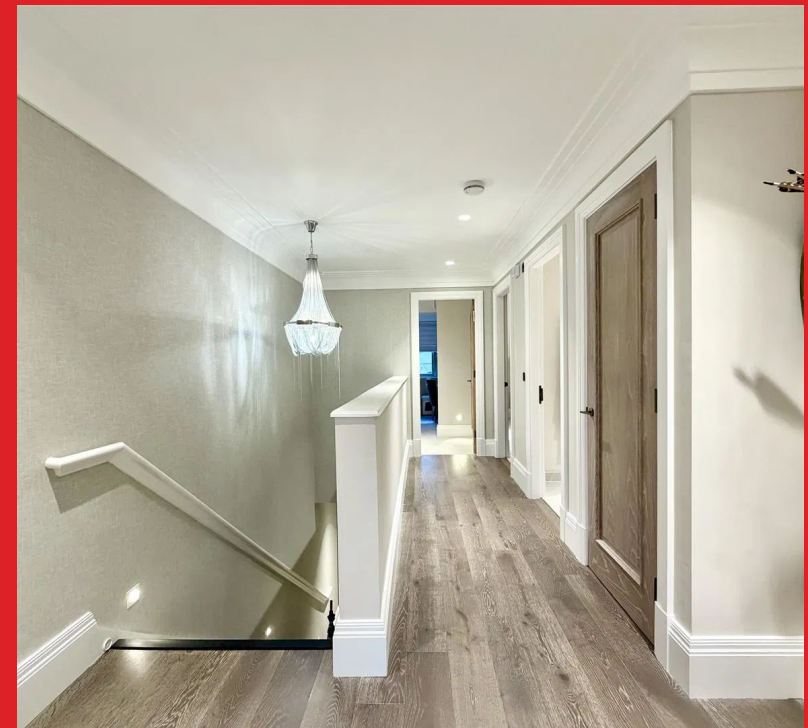
Elizabeth Grove, Bushey Heath
Bushey Heath



**BENJAMIN
STEVENS**
estate agents **exp**

Offers Over
£975,000

A beautifully presented bright and spacious TWO DOUBLE BEDROOM, TWO BATHROOM PENTHOUSE APARTMENT forming part of the exclusive private gated development Heathbourne Village in the heart of Bushey Heath, conveniently located and within walking distance to all local shopping and transport facilities. The property is being offered in excellent decorative order and benefits from: Video Entryphone System, Lift Access, Underfloor Heating, Sonos Speaker System, Reception Room With Fully Fitted Open Plan Kitchen Diner & Bifold Doors Leading Onto Two Balconies, Bedroom One With En Suite Dressing Room & Shower Room, Bedroom Two With Full Range Of Fitted Wardrobes, Family Bathroom, Communal Grounds, Allocated Parking For Two Cars With Fitting For Electric Charging Point. LONG LEASE - CHAIN FREE

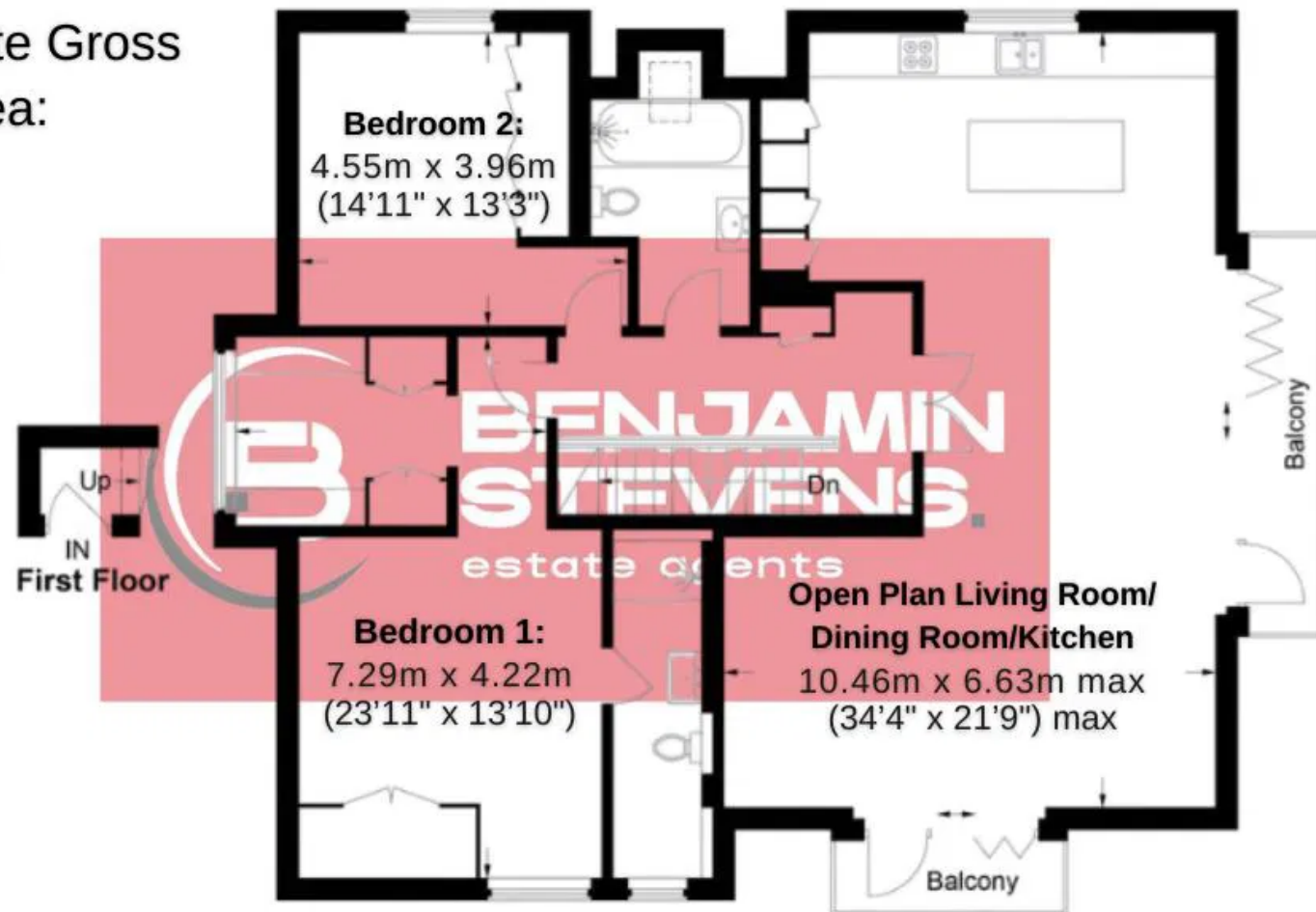






Elizabeth Grove, Bushey Heath, WD23

Approximate Gross
Internal Area:
1488 sq ft
138.3 sq m



Whilst every attempt has been made to ensure the accuracy of the floorplan contained here, measurements of doors, windows, rooms and any other items are approximate and no responsibility is taken for any error, omission or mis-statement. This plan is for illustrative purposes only and should be used as such by any prospective purchaser. The services, systems and appliances shown have not been tested and no guarantee as to their operability or efficiency can be given.

benjaminstevens.co.uk

Benjamin Stevens Estate Agents Limited Company Number 15143871 VAT number 464152108
Registered office: 194 Station Road, Edgware, England, HA8 7AT
Frederick George (Management Services) Ltd is an appointed representative of St Giles Insurance and Finance Services Limited which is authorised and regulated by the Financial Conduct Authority.

BUSHEY HEATH OFFICE

59 High Road, Bushey Heath, Herts, WD23 1EE

0208 950 7777