



Tower View, Bushey Heath, Bushey

Offers Over **£865,000**

An extended bright and spacious FOUR BEDROOM, TWO BATHROOM, THREE RECEPTION ROOM FAMILY HOME forming part of this sought after private gated development in the heart of Bushey Heath, conveniently located and within walking distance to all local shopping/transport facilities and within a great catchment area for all local schools. The property is being offered in excellent decorative order and benefits from: Private Gated Development With Security Entryphone System, Double Glazed Windows, Gas Fired Heating To Radiators, Guest Cloakroom, Living Room, TV Room/Playroom, Fully Fitted Kitchen/Diner With Bi-Fold Doors Leading To Garden, Utility Room, Bedroom One With En Suite Shower Room, Three Further Bedrooms, Family Bathroom, Secluded Rear Garden With Outhouse/Office, Communal Grounds, Parking For Two Cars.

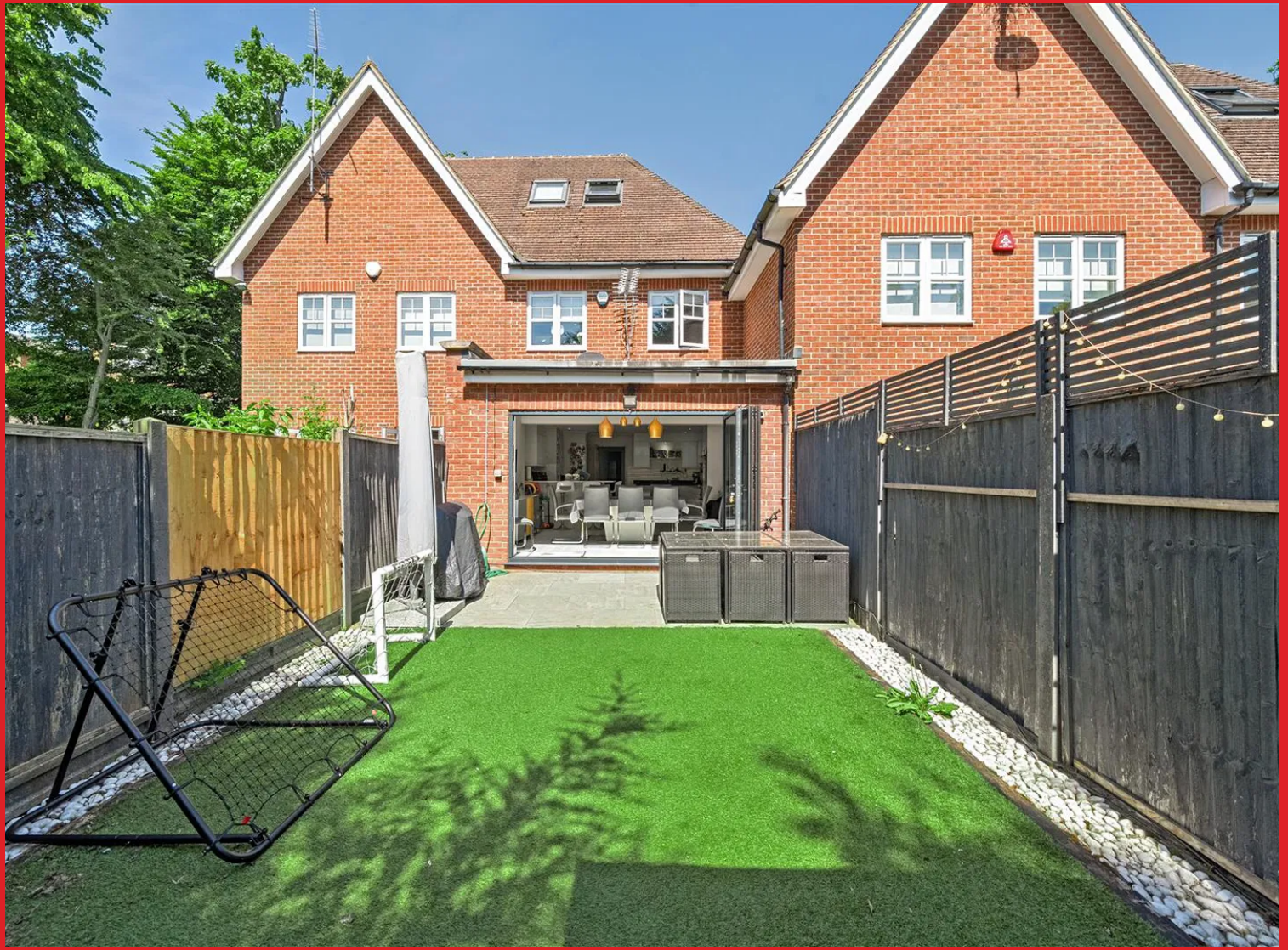
Bedrooms: 4 | Bathrooms: 2 | Receptions: 3



**BENJAMIN
STEVENS.**
estate agents **exp**







Steve Wayne

59 High Road, Bushey Heath, Herts WD23 1EE

0208 950 7777

steve@benjaminstevens.co.uk

<https://benjaminstevens.co.uk>

Tower View, Bushey Heath, Bushey, WD23

Approximate Area = 1821 sq ft / 169.1 sq m

Limited Use Area(s) = 27 sq ft / 2.5 sq m

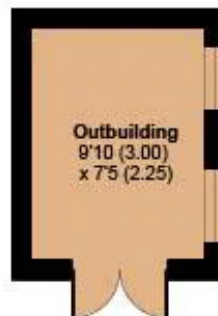
Outbuilding = 73 sq ft / 6.7 sq m

Total = 1921 sq ft / 178.3 sq m

For identification only - Not to scale



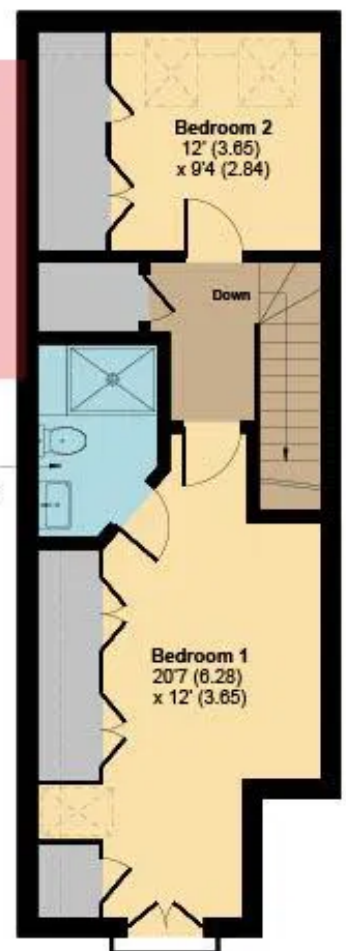
GROUND FLOOR



OUTBUILDING



FIRST FLOOR



SECOND FLOOR



Denotes restricted
head height

