



Persimmon

Together, we make your home



Eckford Vale

Wem • Shropshire



Persimmon
Together, we make your home

Together, we make your home

When it comes to designing a new development, we apply the same philosophy every time – make it unique, make it personal. That's because we understand your new home is more than simply bricks and mortar. It's a private place of sanctuary where we hope you'll laugh, entertain and escape for many years to come.

"With over 50 years of building excellence, find out more about us on page 4"

HBF Home
Builders
Federation



Customer Satisfaction 2025

5 stars!

We're proud of our 5 star builder status awarded by the national Home Builders Federation (HBF). It's a reflection of our commitment to delivering excellence always and putting our customers at the heart of all we do.



Eckford Vale

Find out more

About Persimmon Homes	4
Your journey with us and schemes to help	6
Living at Eckford Vale	8
Development layout	10
Our homes	12
Specifications	20
Sustainability	22
Personalise with Finishing Touches	24
Proud to be building communities	26
Reasons to buy from us	28



Who we are

A little bit about us

You're about to make one of the most exciting investments of your life! A beautiful place to call home for years to come. Here are some reasons to invest in a Persimmon home...

Over 50 years of expertise

We've been building homes and communities since the early seventies, and just as fashions have moved on, so too has construction. Over half a century we've perfected processes, fine-tuned materials and honed skills to make us one of today's most modern and progressive home builders.

Sustainability mission

We're committed to reducing our impact on the planet and building for a better tomorrow, with a dedicated in-house team focused on this. [Read more on page 22](#)

Persimmon plc in numbers

It's not all about numbers we know, but to give you sense of scale here are a few:

10,664

homes
delivered in
2024

200+

locations
across
the UK

4,731

direct employees
make it all
happen

484

acres of
public space
created

£2.2bn

invested in
local communities
over the last
5 years



"Building sustainable homes and community hubs"

Save money on your energy bills

The increased thermal retention from our insulation and double glazing, along with reduced water use thanks to efficient appliances, mean you'll automatically save money on your energy and water bills – and with the rising cost of living, this can make a real difference.



Take a look at the recently published HBF Watt a Save report to find out how much you could save.

The Persimmon Pledge

The Persimmon Pledge is our commitment to making sure you receive exceptional customer service and relevant communications before, during and after you've moved in.

Find out more about the Persimmon Pledge.



Accessible homes

It's crucial that your new home works perfectly for you and your needs. We build in line with Approved Document M accessibility requirements.



Scan the QR code to find out what each rating means.

Giving back

We do everything we can to give back to our communities and proudly contribute towards community hubs, children's play areas, schools and sports facilities.

Our 'Community Champions' and 'Building Futures' programmes help to raise funds for projects and charities across Great Britain. If you'd like to get involved visit persimmonhomes.com/community-champions to see if you could apply to support your local community.

Help when you need it

You'll have a dedicated customer care helpline, plus cover for emergencies like complete loss of electricity, gas, water or drainage.

10-year warranty

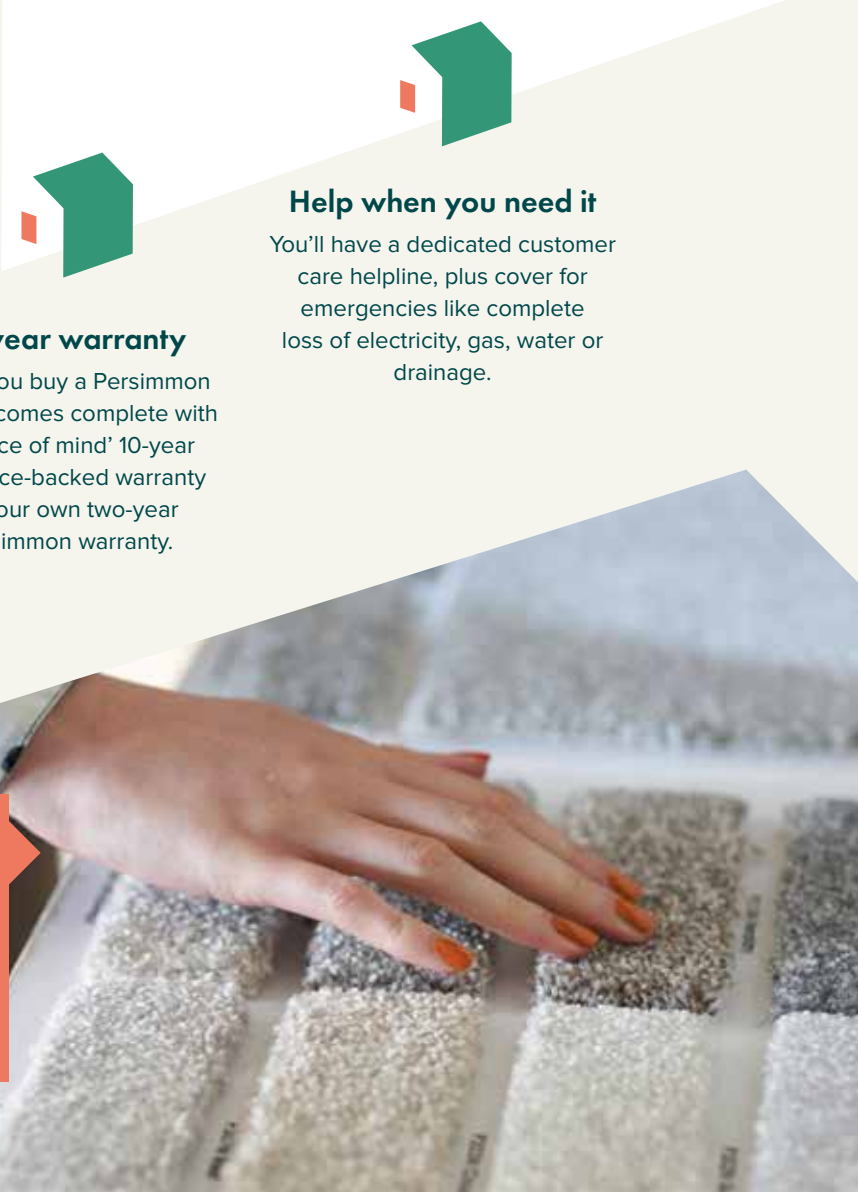
When you buy a Persimmon home it comes complete with a 'peace of mind' 10-year insurance-backed warranty and our own two-year Persimmon warranty.

Happy hour

We run Customer Construction Clinics from our on-site sales offices each Monday from 5-6pm. Pop in to see the team both during and after you've moved in to your new home.

Finishing Touches

We know you'll want to make your home your own, so we created 'Finishing Touches', our home personalisation service. **Read more on page 24**





With you all the way

Your journey with us

From finding your perfect new home to moving in,
we're here to help every step of the way.

1.



2.



3.

Reservation

So you've seen a home you love? Speak to one of our friendly sales advisors who will help you secure your dream home.

Solicitor

You'll need to instruct a solicitor or conveyancer at the point of reservation. Your sales advisor can recommend a local independent company.

Mortgage application

Most people will need to apply for a mortgage. We can recommend independent financial advisors to give you the best impartial advice.

4.



5.



6.

Personalise!

The bit you've been waiting for! Making the final choices for your new home. Depending on build stage you can also choose from a range of Finishing Touches.

Exchange contracts

One step closer to moving in – this is where we exchange contracts and your solicitor will transfer your deposit.

Quality assurance

Your home will be thoroughly inspected by site teams and will also have an Independent Quality Inspection to make sure it's ready for you to move into.

7.



8.



9.

Home demo

Another exciting milestone! Here's where you get to see your new home before completion. You'll be shown how everything works and any questions can be answered.

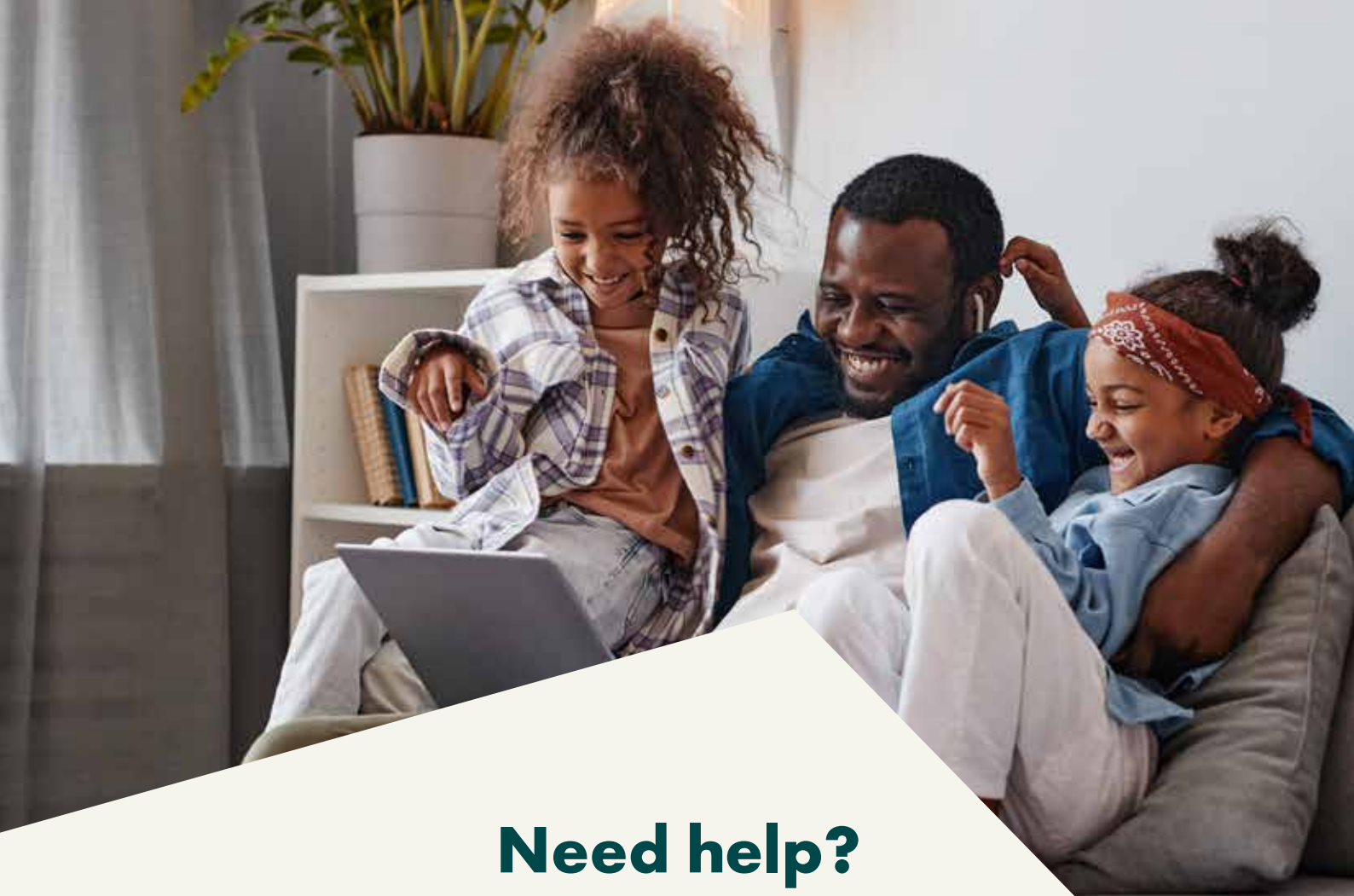
Handover

The moment you've been waiting for! The paperwork has been completed, the money transferred and now it's time to move in and start unpacking...

After-care

Our site and customer care teams will support you every step of the way. You'll receive a dedicated customer care line number to deal with any issues.

[persimmonhomes.com](https://www.persimmonhomes.com)



Need help?

One of the best things about buying a new-build home is the amazing offers and schemes you could benefit from. T&Cs apply.



New Build Boost

Bank of Mum and Dad

Deposit Boost

Armed Forces/Key Workers Discount

- 
- A modern kitchen with grey cabinetry, a white countertop, and a built-in oven. On the counter, there is a wooden cutting board, a toaster, a container of utensils, a potted plant, and some groceries. A dark apron hangs on the wall to the left.
- Choice of 2, 3 and 4-bedroom homes
 - Excellent transport links to nearby towns
 - Beautiful rural location
 - Good range of local amenities



Scan me!

For availability and pricing on our beautiful new homes at Eckford Vale.



Wem • Shropshire

Eckford Vale

Perfect for first-time buyers, families and professionals, Eckford Vale offers a range of two, three and four-bedroom homes that combine easy amenities with peaceful rural life.

This countryside location means you can embrace the beauty of the Shropshire countryside every day with numerous parks and green spaces nearby. Local key nature spots include Fenn's, Whixall & Bettisfield Mosses National Nature Reserve and Hawkstone Park Follies – where you can enjoy scenic walking routes and outdoor adventures for all ages.

Situated in the heart of Shropshire and on the edge of Wem, you have easy access to a variety of local shops, traditional pubs and essential services in Wem town centre. Plus, the popular market town of Whitchurch is under 20 minutes away by car. With Wem Railway Station close by, residents enjoy regular train services to Shrewsbury and

other major cities. Plus, the development also offers easy access to the A49, connecting you to the wider road network. For air travel, Manchester and Birmingham Airport are both under an hour and a half by car.

With a new home in Eckford Vale, growing families will benefit from nearby well-regarded schools. St Peter's CE Primary School provides excellent primary education, and The Thomas Adams School offers secondary education with a strong academic reputation.

EXPLORE

Wem
railway station
1 mile

Hawkstone Park
Follies
5.6 miles

Shrewsbury
11.6 miles

Telford
22.6 miles



Eckford Vale

Our homes

2 bedroom



The Addlebrough

3 bedroom



The Kingley



The Sherwood



The Barndale

4 bedroom



The Rivington



The Marston



The Brampton



The Lambridge



Affordable Housing

As agreed through Section 106





This site layout is intended for illustrative purposes only, and may be subject to change, for example, in response to market demand, ground conditions or technical and planning reasons. Trees, planting and public open space shown are indicative, actual numbers and positions may vary. This site plan does not form any part of a warranty or contract. Further information is available from a site sales advisor. The location of the affordable housing on this plan is indicative only and both the location and number of affordable housing plots may be subject to change.

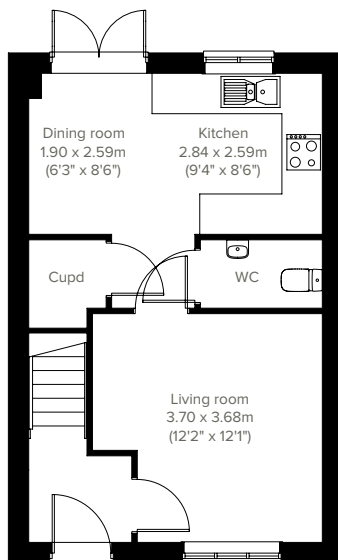


2 bedroom home

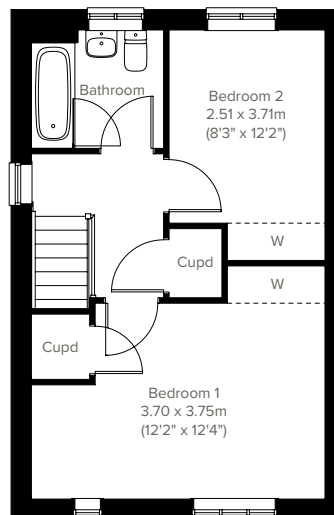
The Addlebrough



The Addlebrough features a bright open plan kitchen/dining room with French doors leading into the garden and a spacious front-aspect living room. Upstairs there are two nicely-proportioned bedrooms and a bathroom. With plenty of storage cupboards too, this house is ideal for first-time buyers and young professionals.



GROUND FLOOR



1ST FLOOR

Please note that elevation treatments and window/door positions may vary from plot to plot. Plot specific information will be confirmed on your reservation check list.

This information is for guidance only and does not form any part of any contract or constitute a warranty. Illustrations are of typical elevations and may vary. Floor plans are not drawn to scale and window positions may vary. Room dimensions are subject to a +/- 50mm (2") tolerance and are based on the maximum dimensions in each room. Please consult your sales advisor on site for specific elevations, room dimensions and external finishes. The PEA ratings are estimated and vary between home types, orientation and developments.

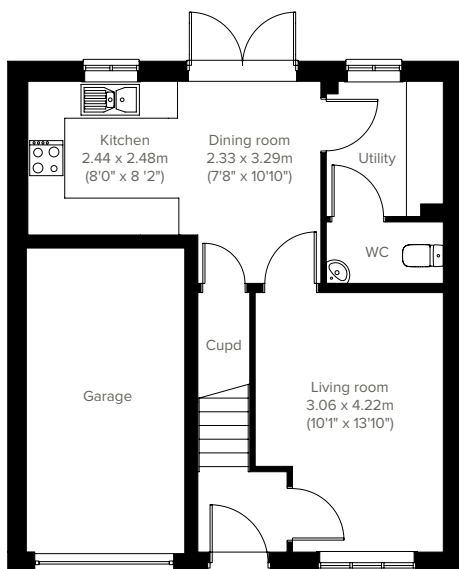


The Kingley

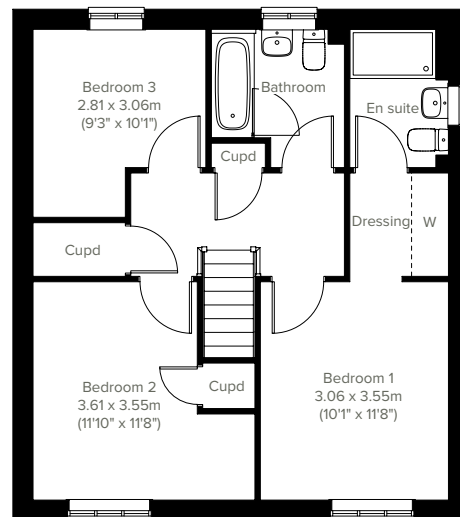
3 bedroom home



An attractive three-bedroom family home, the Kingley is ideal for modern living. The bright open plan kitchen/dining room has French doors leading into the garden - perfect for entertaining and family meals. The downstairs WC and four storage cupboards take care of everyday storage. Plus there's an en suite and dressing room to bedroom one, modern family bathroom and integral garage.



GROUND FLOOR



1ST FLOOR

Please note that elevation treatments and window/door positions may vary from plot to plot. Plot specific information will be confirmed on your reservation check list.

This information is for guidance only and does not form any part of any contract or constitute a warranty. Illustrations are of typical elevations and may vary. Floor plans are not drawn to scale and window positions may vary. Room dimensions are subject to a +/- 50mm (2") tolerance and are based on the maximum dimensions in each room. Please consult your sales advisor on site for specific elevations, room dimensions and external finishes. The PEA ratings are estimated and vary between home types, orientation and developments.

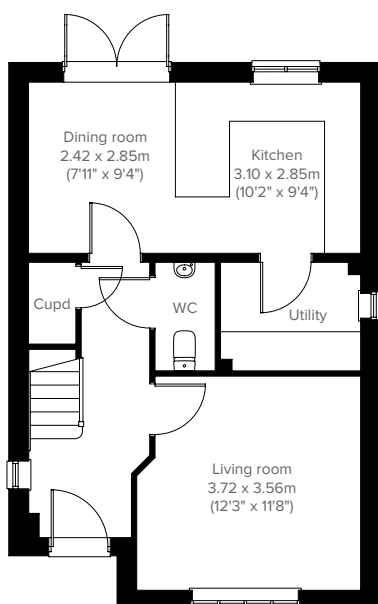


3 bedroom home

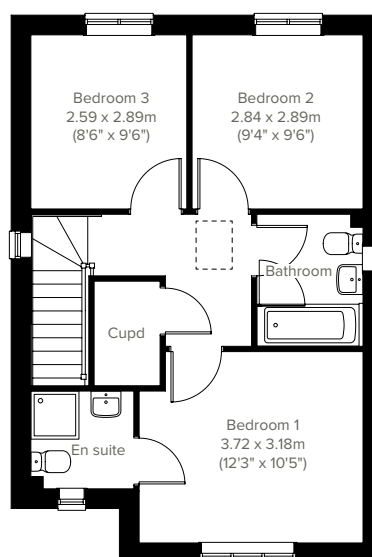
The Sherwood



The Sherwood is a modern home ideal for family life. This three-bedroom home features an open plan kitchen/dining room with French doors leading into the garden, a handy utility room, a front-aspect living room, plus under-stairs storage and a WC. The first floor has three good-sized bedrooms, one with an en suite, and the main family bathroom.



GROUND FLOOR



1ST FLOOR

Please note that elevation treatments and window/door positions may vary from plot to plot. Plot specific information will be confirmed on your reservation check list.

This information is for guidance only and does not form any part of any contract or constitute a warranty. Illustrations are of typical elevations and may vary. Floor plans are not drawn to scale and window positions may vary. Room dimensions are subject to a +/- 50mm (2") tolerance and are based on the maximum dimensions in each room. Please consult your sales advisor on site for specific elevations, room dimensions and external finishes. The PEA ratings are estimated and vary between home types, orientation and developments.

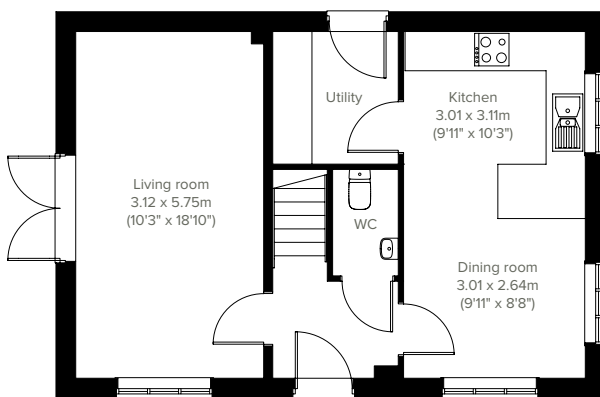


The Barndale

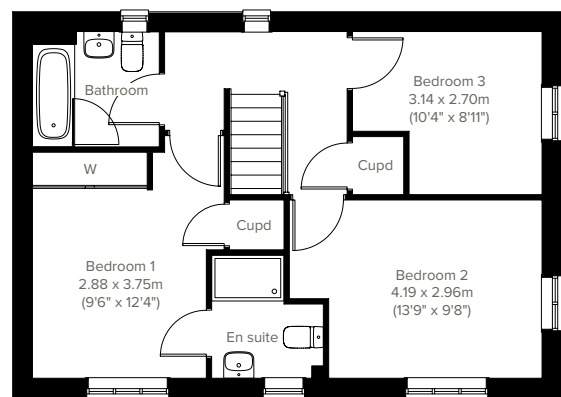
3 bedroom home



A thoughtfully-designed three-bedroom family home with much to offer, the Barndale has a bright and modern open plan kitchen/dining room leading to a handy utility room. The spacious living room has French doors leading into the garden. The inner hallway, downstairs WC and cupboards take care of everyday storage. Plus there's an en suite to bedroom one and a family bathroom.



GROUND FLOOR



1ST FLOOR

Please note that elevation treatments and window/door positions may vary from plot to plot. Plot specific information will be confirmed on your reservation check list.

This information is for guidance only and does not form any part of any contract or constitute a warranty. Illustrations are of typical elevations and may vary. Floor plans are not drawn to scale and window positions may vary. Room dimensions are subject to a +/- 50mm (2") tolerance and are based on the maximum dimensions in each room. Please consult your sales advisor on site for specific elevations, room dimensions and external finishes. The PEA ratings are estimated and vary between home types, orientation and developments.

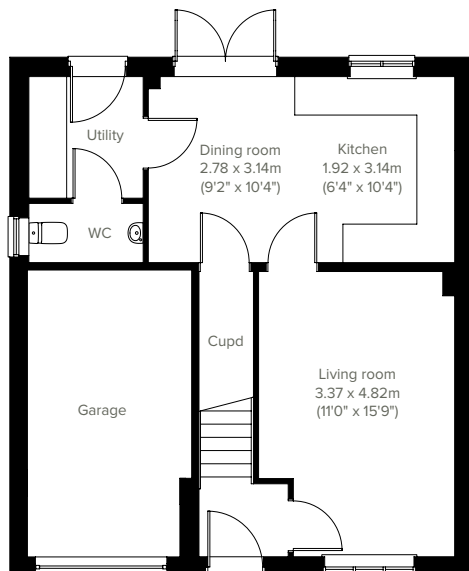


4 bedroom home

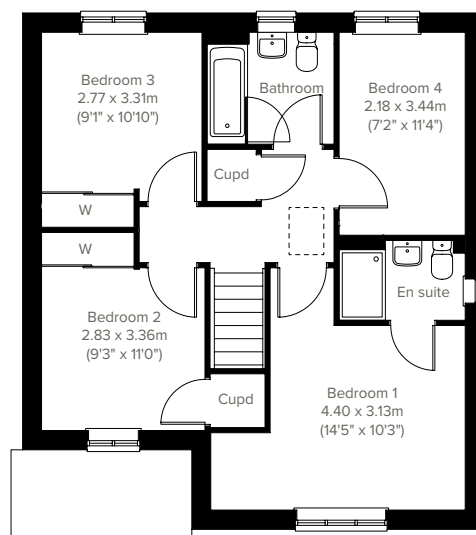
The Rivington



An attractive family home, the Rivington is designed for modern living. It's a four-bedroom detached home with an integral garage, a front-aspect living room and a spacious open plan kitchen/dining room with French doors leading out into the garden - ideal for family life and entertaining friends. Bedroom one has an en suite with the roomy landing leading on to three further bedrooms, storage cupboards and the main family bathroom.



GROUND FLOOR



1ST FLOOR

Please note that elevation treatments and window/door positions may vary from plot to plot. Plot specific information will be confirmed on your reservation check list.

This information is for guidance only and does not form any part of any contract or constitute a warranty. Illustrations are of typical elevations and may vary. Floor plans are not drawn to scale and window positions may vary. Room dimensions are subject to a +/- 50mm (2") tolerance and are based on the maximum dimensions in each room. Please consult your sales advisor on site for specific elevations, room dimensions and external finishes. The PEA ratings are estimated and vary between home types, orientation and developments.

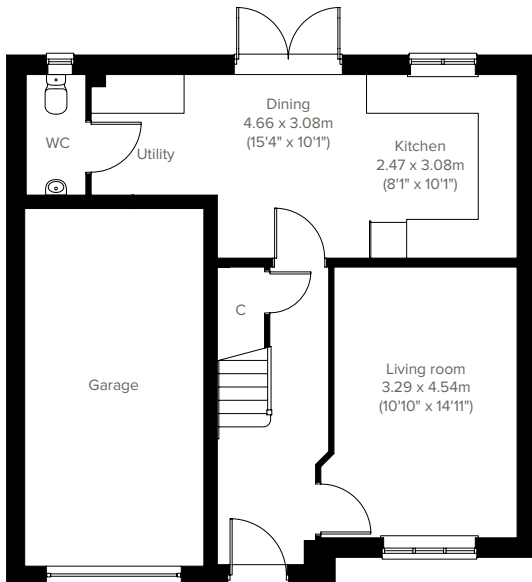


The Marston

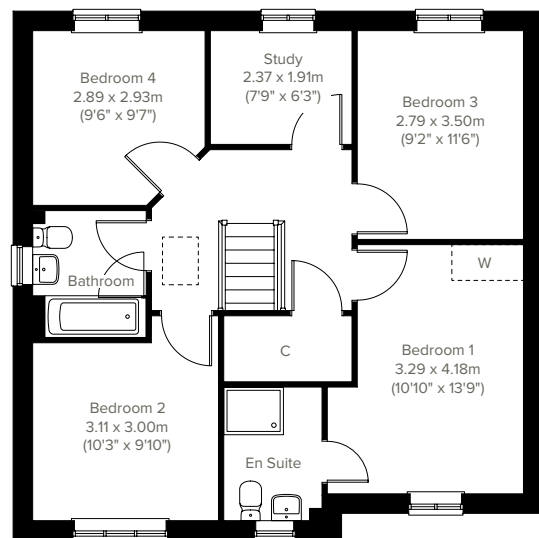
4 bedroom home



The popular Marston ticks all the boxes. The modern and stylish open plan kitchen/dining room is perfect for spending time as a family and entertaining. There's also a well-proportioned living room, downstairs WC and handy utility. Upstairs there are four bedrooms - bedroom one has an en suite - a large family-sized bathroom, a study and further storage.



GROUND FLOOR



1ST FLOOR

Please note that elevation treatments and window/door positions may vary from plot to plot. Plot specific information will be confirmed on your reservation check list.

This information is for guidance only and does not form any part of any contract or constitute a warranty. Illustrations are of typical elevations and may vary. Floor plans are not drawn to scale and window positions may vary. Room dimensions are subject to a +/- 50mm (2") tolerance and are based on the maximum dimensions in each room. Please consult your sales advisor on site for specific elevations, room dimensions and external finishes. The PEA ratings are estimated and vary between home types, orientation and developments.

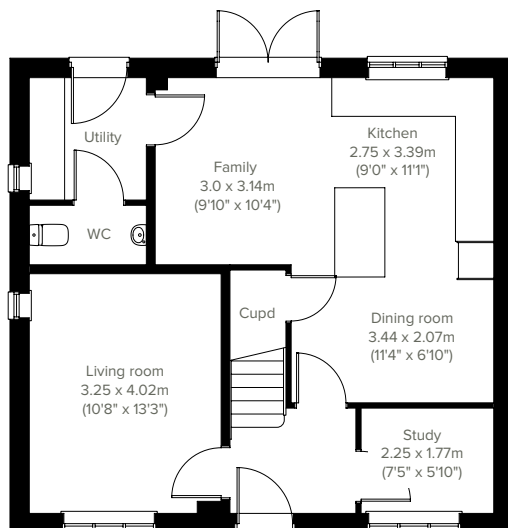


4 bedroom home

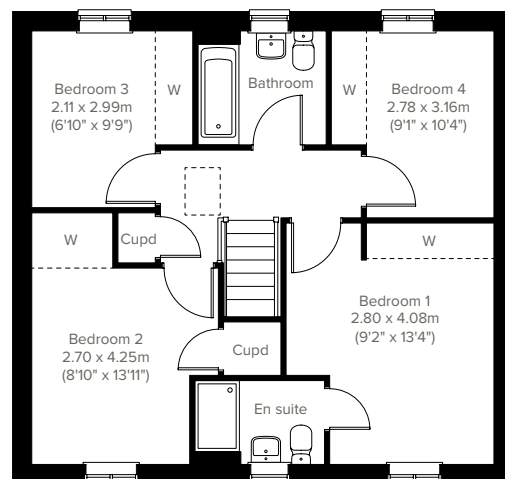
The Brampton



A beautifully-designed four-bedroom detached home, the Brampton has everything you need for modern living. Downstairs there's a front-aspect living room, a spacious kitchen/dining/family room with French doors leading into the rear garden, and a separate study. The first floor is home to a generous bedroom one with an en suite plus, plenty of storage cupboards and the family bathroom.



GROUND FLOOR



1ST FLOOR

Please note that elevation treatments and window/door positions may vary from plot to plot. Plot specific information will be confirmed on your reservation check list.

This information is for guidance only and does not form any part of any contract or constitute a warranty. Illustrations are of typical elevations and may vary. Floor plans are not drawn to scale and window positions may vary. Room dimensions are subject to a +/- 50mm (2") tolerance and are based on the maximum dimensions in each room. Please consult your sales advisor on site for specific elevations, room dimensions and external finishes. The PEA ratings are estimated and vary between home types, orientation and developments.

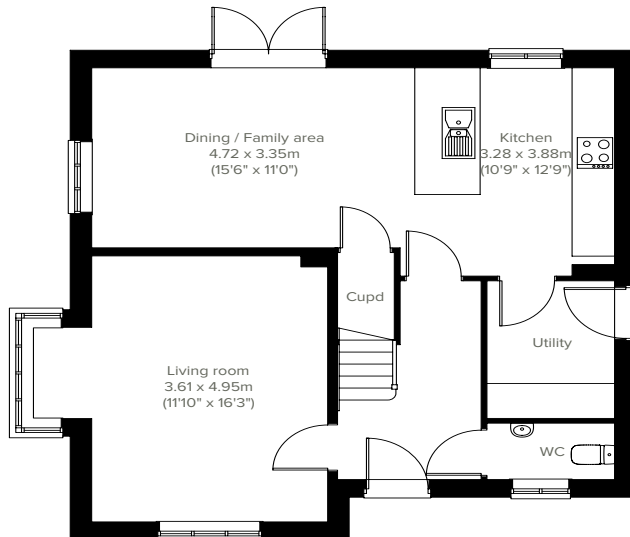


The Lambridge

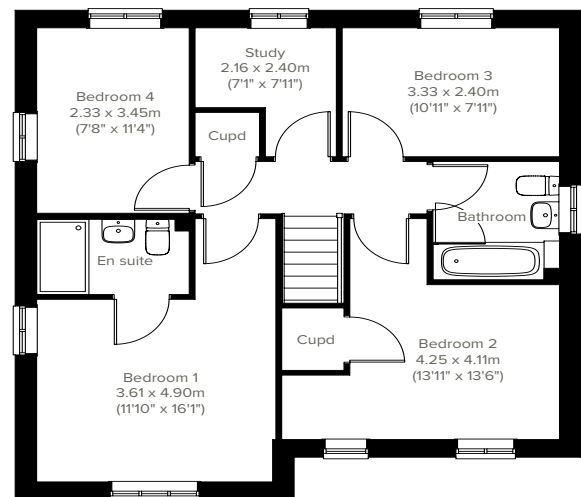
4 bedroom home



The Lambridge is a four-bedroom family home. The spacious kitchen/family/dining room enjoys an open aspect through French doors to the rear garden. There's a bright front-aspect living room with a bay window, a downstairs WC and handy utility. Upstairs you'll find four bedrooms - bedroom one benefiting from an en suite - plus a convenient study, modern-fitted family bathroom and two storage cupboards.



GROUND FLOOR



1ST FLOOR

Please note that elevation treatments and window/door positions may vary from plot to plot. Plot specific information will be confirmed on your reservation check list.

This information is for guidance only and does not form any part of any contract or constitute a warranty. Illustrations are of typical elevations and may vary. Floor plans are not drawn to scale and window positions may vary. Room dimensions are subject to a +/- 50mm (2") tolerance and are based on the maximum dimensions in each room. Please consult your sales advisor on site for specific elevations, room dimensions and external finishes. The PEA ratings are estimated and vary between home types, orientation and developments.



Eckford Vale

Specifications

Our homes include these items as standard to ensure you have everything you need to be comfortable from the day you move in. Built for today's modern lifestyles with sustainability in mind.



Add some finishing touches

Depending on the build stage of your new home, you can upgrade things like kitchens, appliances, taps and showers via our bespoke 'Finishing Touches' range.



External

Walls

Traditional cavity walls.
Inner: timber frame or block.
Outer: Style suited to planned architecture.

Roof

Tile or slate-effect with PVCu rainwater goods.

Windows

Double glazed E-glass windows in PVCu frames.

Doors

GRP-skinned external doors with PVCu frames.
French doors to garden or balcony
(where applicable).



Internal

Ceilings

Painted white.

Lighting

Pendant or batten fittings with low-energy bulbs.

Stairs

Staircase painted white.

Walls

Painted in white emulsion.

Doors

White pre-finished doors with white hinges.

Heating

Gas fired combi boiler with radiators in all main rooms, with thermostatically-controlled valves to bedrooms.

Insulation

Insulated loft and hatch to meet current building regulations.

Electrics

Individual circuit breakers to consumer unit and double electric sockets to all main rooms.

General

Media plate incorporating TV and telecommunication outlets to living room.



Bathroom

Suites

White bathroom suites with chrome-finished fittings.

Extractor fan

Extractor fan to bathroom and en suite
(where applicable).

Shower

Mira showers with chrome fittings to en suite.
Where there is no en suite, Mira thermostatic shower with wall mounted shower head.

Splashbacks

Splashback to sanitaryware walls in bathroom and en suite. Splashback to bath and full height tiled shower where separate enclosure only.

General

En suite to bedroom(s) where applicable.



Security

Locks

Three-point locking to front and rear doors, locks to all windows (except escape windows).

Fire

Smoke detectors wired to the mains with battery back-up.



Garage & Gardens

Garage

Garage, car ports or parking space.

Garden

Front lawn turfed or landscaped
(where applicable).

Fencing

1.8 metre fence to rear garden, plus gate.



Kitchen

General

Fully-fitted kitchen with a choice of doors and laminate worktop with upstands to match (depending on build stage).

Plumbing

Plumbing for washing machine.

Appliances

Single electric stainless steel oven and gas hob in stainless steel with integrated stainless steel cooker hood.





Energy efficiency built in

Sustainability

Our homes are typically 30% more efficient than traditional UK housing, helping you to save money and reduce your impact on the environment.

We're proud that we already build our homes to high levels of energy efficiency, but there's still a way to go. Our in-house sustainability team is dedicated to our mission to have net zero carbon homes in use by 2030, and for our own operations to be net zero carbon by 2040.

To achieve this, we're working to science-based carbon reduction targets in line with the Paris Agreement's 1.5°C warming pledge, investing in low-carbon solutions and technology that will further reduce the carbon footprints of our homes and our impact on the planet.

Energy efficiency built in:

- ✓ **PEA rating – B**
Our typical B rating makes our homes much more efficient than traditional D-rated homes.
- ✓ **Up to 400mm roof space insulation**
Warmer in winter, cooler in summer, reducing energy bills.
- ✓ **Argon gas filled double glazing**
Greater insulation and reduced heat loss.
- ✓ **Energy efficient lighting**
We use energy-saving LED lightbulbs in all our homes.
- ✓ **A-rated appliances**
Many of our kitchen appliances have a highly efficient A rating.
- ✓ **A-rated boilers**
Our condenser boilers far outperform non-condensing ones.
- ✓ **Local links**
We're located close to amenities and public transport to help reduce your travel footprint.
- ✓ **Lower-carbon bricks**
Our concrete bricks typically use 28% less carbon in manufacture than clay, giving total lifetime carbon savings of 2.4 tonnes of CO₂ per house built.
- ✓ **Ultra-fast broadband**
FibreNest fibre-to-the-home connectivity helps you live and work at home more flexibly.

Eco goodies

When you move in to your new Persimmon home you'll find some of our favourite eco brands in your Homemove box. These products are plastic free, refillable and ethically sourced.





Your home, your way

Finishing Touches to make it yours

Our goal is to make your house feel like your home before
you've even collected the keys.

Key to achieving this is giving you the creative freedom to add your own style and personality to every room through our fabulous Finishing Touches collection.

Featuring the very latest designs from a host of leading brands, Finishing Touches lets you personalise your home inside and out. And rest assured, every upgrade and item available has been carefully chosen to complement the style

and finish of your new home. Of course, the real beauty is that all these extras will be ready for the day you move in.

Thanks to our impressive buying power we can offer almost any upgrade you can imagine at a highly competitive price. It can all be arranged from the comfort and convenience of one of our marketing suites, in a personal design appointment.

You can choose:



Kitchens



Appliances



Bathrooms



Flooring



Wardrobes



Fixtures & fittings

"One of the most exciting things about buying a brand new home is putting your own stamp on a blank canvas."



Share & win!

Share your love for your new Persimmon home and you could be in with a chance of winning a voucher. For more details, see our Instagram page, @persimmon_homes.

#lovemypersimmonhome

The earlier you reserve, the greater the choice

We'll always try and accommodate the Finishing Touches you want, but they are build-stage dependent, so the earlier you reserve the better.

persimmonhomes.com/finishing-touches

Finishing Touches are subject to availability and stage of construction. Prices for your specific home type will be in our price list. For a full list of Finishing Touches available for your home, please contact the sales advisor on site.



All about community

Proud to be building communities

When creating Eckford Vale, not only did we create a lovely local environment for you and your family, we also contributed to the wider community.

Throughout the development process, we proactively engage with local communities and work closely with planning authorities. Eckford Vale has achieved the right balance of homes and open space and the right mix of house types for a thriving community.

We also include much-needed homes for our Housing Association partners. Our plan enhances local facilities too, providing investment in local infrastructure such as transport, education, retail and recreation facilities, as well as initiatives to generate biodiversity.



“We’ve actively enhanced biodiversity at Eckford Vale.”

EDUCATION

Excellent nursery, primary & secondary schools nearby.

HOUSING

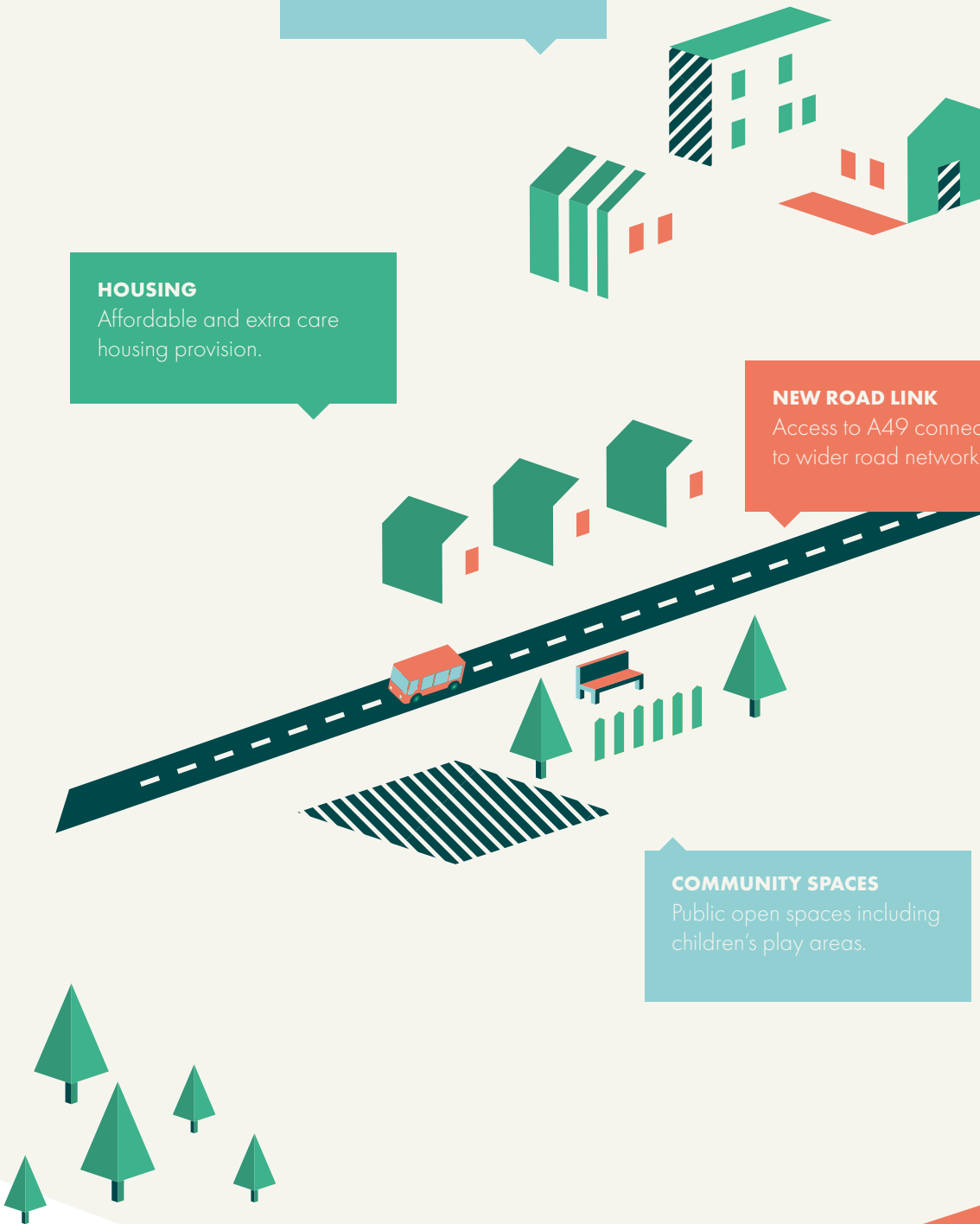
Affordable and extra care housing provision.

NEW ROAD LINK

Access to A49 connecting to wider road network.

COMMUNITY SPACES

Public open spaces including children's play areas.





Eco Range homes

New build homes are changing, and together, we're embracing the future. Recent updates to the Government's Part L building regulations mean from June 2023 our new Persimmon Eco Range homes will have a reduction of 31% in carbon emissions. This means a warmer, more energy-efficient home for you and the really cosy feeling of knowing it's better for the environment.

This means... **a saving of up to £6,730*** over the lifetime of a 25 year mortgage.



31 % reduction in carbon emissions

Solar panels help boost your existing energy-efficient boiler using sustainable green energy. For full details of the number of solar panels (where applicable) and the location; please refer your sales advisor for details.

EV charging is a handy addition if you have an electric car, as you can charge it from the comfort of your own home. NB: Not all homes will have EV chargers as they're site and plot dependent. They can be added from our Finishing Touches range.

Enhanced loft insulation is a huge cosy blanket that slows down the transfer of heat between your home and the outside world. It not only warms your home in the winter but keeps it cooler in the summer.

More thermally-efficient walls mean less heat escaping, so you aren't as dependent on central heating, and whatever heat is generated is kept in your home.

Our panelised offsite-manufactured timber frame technology uses a unique, sustainable panel system which adds to the thermal efficiency of your home. *NB: not all homes will be built using timber frame technology.

Energy-efficient boilers use the latest technology to warm your already well-insulated home. The controls allow you to optimise your energy saving whilst keeping you comfortable.

A more thermally-efficient ground floor will mean you'll benefit from the additional insulation we're incorporating in the floor construction.

*When compared to a Victorian-built equivalent, savings could be up to £31,640. The £6,730 saving is in comparison to a Persimmon home built to current building regulations (2013).[†]NB: not all homes will be built using timber frame technology.

[†]NB: Not all homes will have EV Chargers, but they can be added from our Finishing Touches range.



Your modern home

Space4 is one of the UK's leading producers of precision-engineered construction systems, aiming to include their PEFC-certified sustainable timber frames in 50% of homes by 2025.

Many Persimmon homes already benefit from Space4's modern method of construction, with its technology offering improved insulation and air-tightness. For you, this means a reduction of 50% in heating costs compared to the average home in the UK*, plus you'll own a cosier, more comfortable home.

On the outside, your Space4 home will feature the familiar design of a Persimmon home which uses traditional materials such as brick, stone or render. Underneath, the hi-tech timber frame backbone creates new levels of efficiency and building rigidity. Your property will be durable and finished to an excellent standard.

High-performance insulation, together with Space4 construction, an efficient boiler, and attention to air-tightness and ventilation during the construction process, means that our homes can use 59% less gas than the average home in the UK*.

The use of Space4 technology creates a better place to live and work. Lower consumption of heating fuels and transport helps reduce CO2 emissions, while sustainable, recyclable materials create less impact on the wider environment. The overall carbon dioxide emissions for timber construction (the embodied carbon dioxide) are up to six times lower than for masonry.*

Concerning the Government's code for sustainable homes, most building elements with timber specifications largely fall into the 'A+' or 'A' rated categories compared to masonry**.

50% lower energy bills

According to recent research by the HBF, those who live in new build homes constructed to today's standards could save more than £3,100 a year on their energy bills compared to neighbours in older homes.* This means families could save approximately £77,500 over the lifetime of a 25-year mortgage.

Scan me!

For the HBF Watt a Save report Feb 2023.



Eckford Vale

*Source: www.nhbcfoundation.org **Source: "10 Department of Energy and Climate Change Regional and local authority energy consumption statistics".
***Source: UK Timber Frame Association Comfort and Cost. Details correct at time of going to press.



6 reasons why it pays to buy new

Did you know?

Most of the benefits of buying new are obvious, but some are not. Here's a quick summary of the key reasons why it's such a smart move:

1.

No chain

Few things are more annoying in the home buying process than a time-consuming chain you can't control. Buying new limits the chance of getting involved in one.

2.

Energy efficient

Our homes include cost-effective combi boilers, first-rate loft insulation and draught-free double glazed windows to meet stringent energy-efficient standards, keeping your energy bills as low as possible.

3.

Brand new

Absolutely everything in your new home is brand new. You get all the latest designs and tech, complete with manufacturers' warranties. Win-win.

4.

More ways to buy

We offer a range of schemes to help get you on the property ladder, including Home Change and Part Exchange.

5.

10 year warranty

All our new homes come with a ten-year, insurance-backed warranty, as well as our own two-year Persimmon warranty. In the unlikely event you ever need to claim, our Customer Care Team are there to help you.

6.

Safe & secure

All our homes are built from fire-retardant materials and come with fitted smoke alarms and fire escape windows. They're also far more secure than older buildings thanks to the security locks and lighting we use.

[persimmonhomes.com](https://www.persimmonhomes.com)



Persimmon

Notes

Handwriting practice lines consisting of 12 horizontal dotted lines.





Your home, better connected
for a brighter future

Hyperfast 900Mb broadband is available on this development.

FibreNest provides you with high-speed, totally unlimited
full-fibre broadband to your home, at great prices.



Choose the best package for you

We know every household is different, that's why we've put together six amazing
packages to suit everyone's needs. From surfing the net on the sofa to binge-
watching the latest box set, streaming music with friends to ruling the galaxy in
the latest must-have game - we've got the service for you.



Scan me!
For packages & pricing.



0333 234 2220



support@fibrenew.com

Information correct at June 2025. Please see www.fibrenew.com for the latest information and prices.

Get connected today!

To sign up you will need your Unique Customer Reference.
Please ask your sales advisor for this:

C:

D:

P:







Eckford Vale

Lowe Hill Road
Wem
Shrewsbury
SY4 5UT

T: 01939 550 777

E: eckfordvale.wmid@persimmonhomes.com
persimmonhomes.com/eckford-vale

Head Office

Persimmon Homes West Midlands
Wilkinson House
Stafford Court
Stafford Park 1
Telford
TF3 3BD

T: 01939 550 777

E: wmid.sales@persimmonhomes.com
persimmonhomes.com



Issue: October 2025 Ref: 240-L08

Persimmon plc, Registered office: Persimmon House, Fulford, York YO19 4FE Registered in England no: 1818486

Eckford Vale is a marketing name only. The copyright in this document and design is confidential to and the property of Persimmon Homes Developments 2025. These details are intended to give a general idea of the type of home but they do not form part of any specification or contract. The dimensions are approximate and may vary depending on internal finish. By the time you read this some of the details may have changed because of the Persimmon Homes policy of continually updating and improving design features. Therefore, please be sure to check the plan and specification in the sales office to keep you up-to-date with the latest improvements. The vendors of this property give notice that: (i) the particulars are produced in good faith, are set out as a general guide only and do not constitute any part of a contract; (ii) no person in the employment of Persimmon Homes or their authorised agents has any authority to make or give any representation or warranty whatever in relation to this property. Persimmon Homes is compliant with the New Homes Quality Code. Please ask your sales advisor if you have any further questions.