



Threeways Hill Street, Hinckley

Hinckley

Offers in Region of £530,000



Threeways Hill Street

Hinckley, Hinckley

Detached Edwardian Residence| Four Bedrooms|
Downstairs W/C Shower Room| Cellar| Sizeable Plot|
Ample Off Road Parking & Gated Driveway| Great
Location Close To Town| |Council Tax Band D & EPC D
Council Tax band: D

Tenure: Freehold

EPC Energy Efficiency Rating: D

EPC Environmental Impact Rating: E

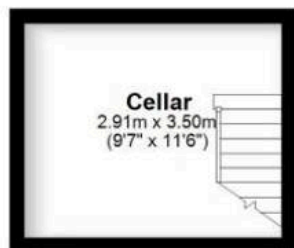
- Detached Edwardian Residence
- Four Spacious Bedrooms
- Downstairs W/C + Additional Shower Room
- Cellar
- Sizeable Plot
- Ample Off Road Parking & Gated Driveway
- Great Location Close To Town
- Council Tax Band D & EPC D





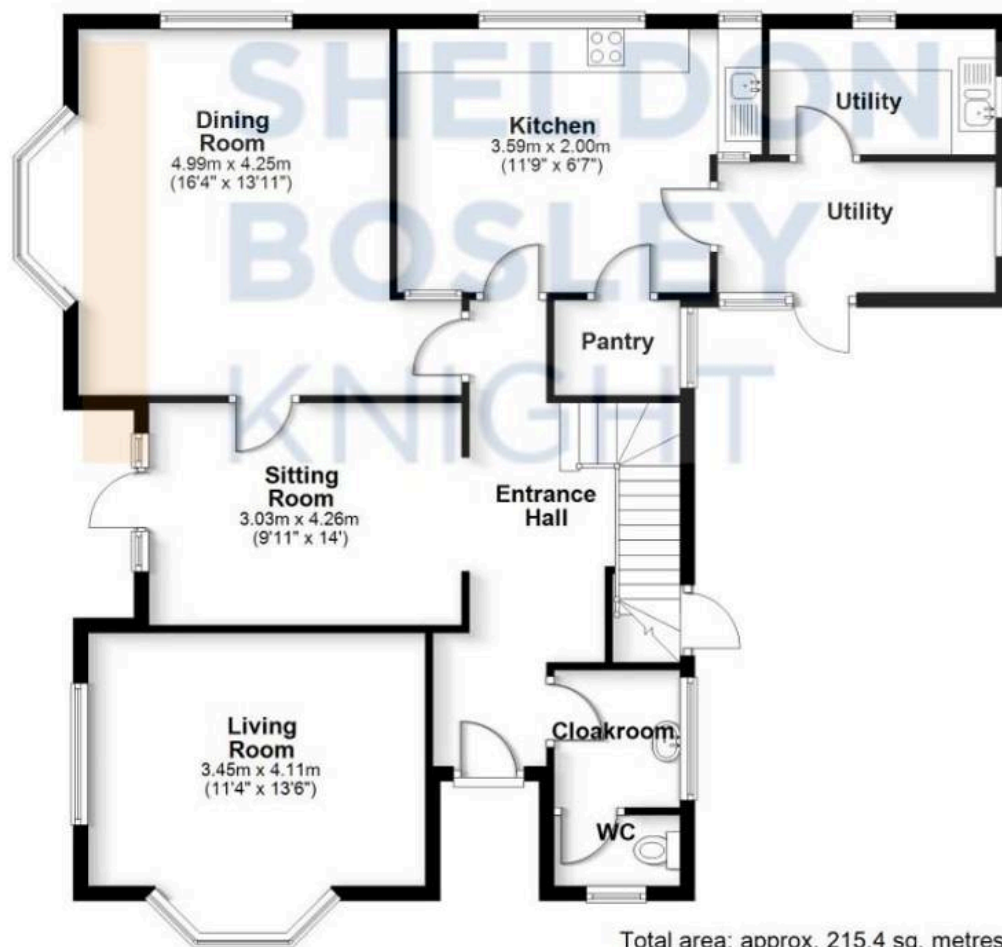
Basement

Approx. 10.2 sq. metres (109.6 sq. feet)



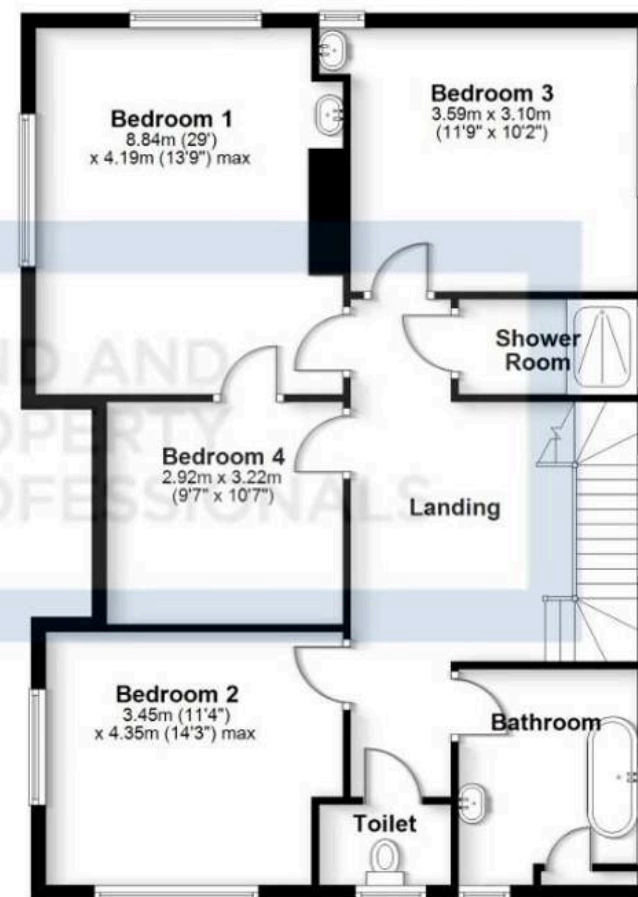
Ground Floor

Approx. 101.4 sq. metres (1090.9 sq. feet)



First Floor

Approx. 103.9 sq. metres (1118.3 sq. feet)



Total area: approx. 215.4 sq. metres (2318.8 sq. feet)

All efforts have been made to ensure the measurements are accurate on this floor plan, however these are for guidance purposes only.
Plan produced using PlanUp.



Sheldon Bosley Knight Nuneaton

Sheldon Bosley Knight, 39 Newdegate Street - CV11 4ER

02476374949 • nuneaton@sheldonbosleyknight.co.uk • www.sheldonbosleyknight.co.uk/