



13 Castle Road, Nuneaton

Nuneaton

Offers in Region of **£240,000**



**SHELDON
BOSLEY
KNIGHT**

LAND AND
PROPERTY
PROFESSIONALS

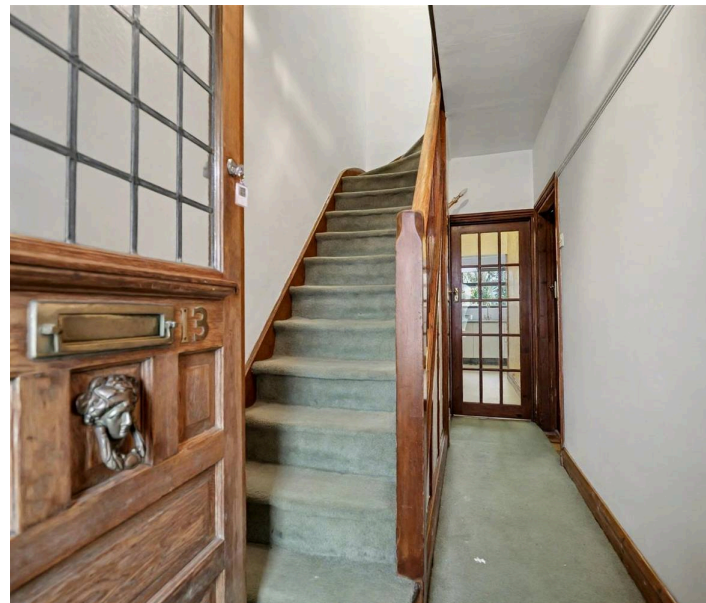
13 Castle Road

Nuneaton, Nuneaton

Three Bedroom semi detached| Extended|
Downstairs toilet| Popular Location| A project offering
potential| Ideal Family home| Large Rear Garden| Off
street Parking| *NO UPWARD CHAIN*
Council Tax band: B

Tenure: Freehold

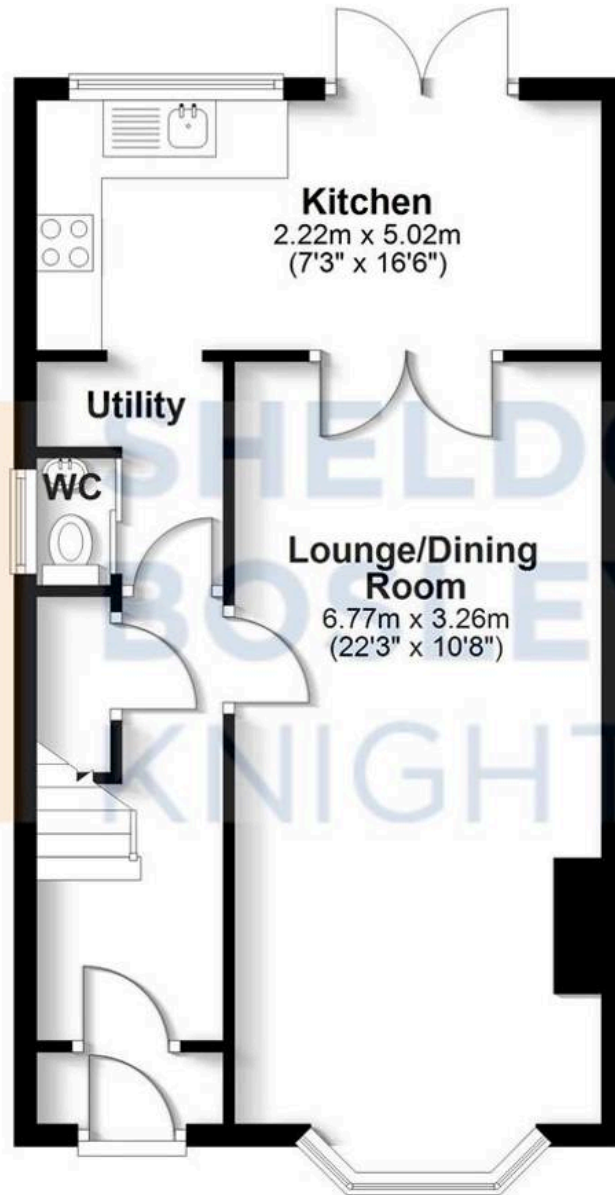
- Three Bedroom semi detached
- Extended
- Downstairs toilet
- Popular Location
- A project offering potential
- Ideal Family home
- Large Rear Garden
- Off street Parking
- *NO UPWARD CHAIN*





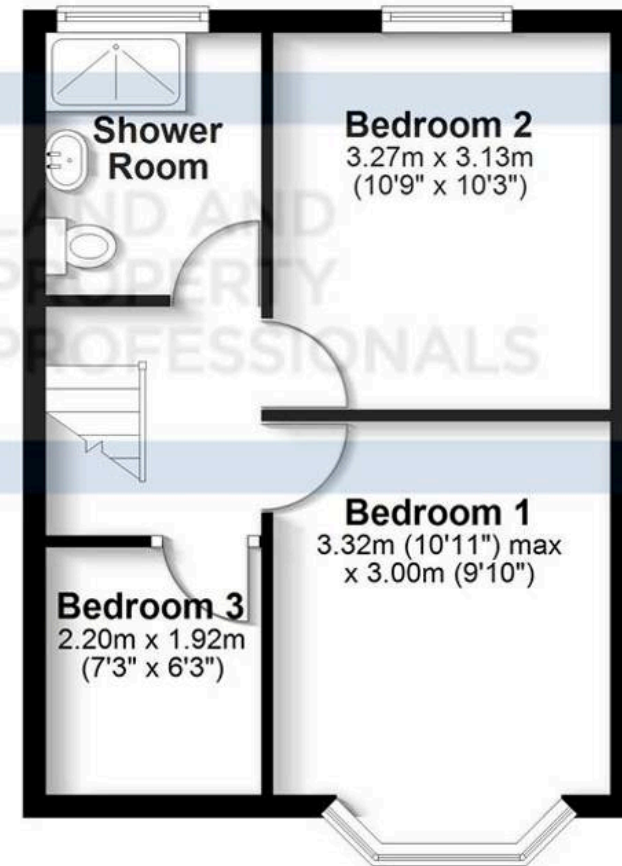
Ground Floor

Approx. 45.9 sq. metres (493.7 sq. feet)



First Floor

Approx. 34.4 sq. metres (370.4 sq. feet)



Total area: approx. 80.3 sq. metres (864.0 sq. feet)

All efforts have been made to ensure the measurements are accurate on this floor plan, however these are for guidance purposes only.
Plan produced using PlanUp.



Sheldon Bosley Knight Nuneaton

39 Newdegate Street - CV11 4ER

02476374949 • nuneaton@sheldonbosleyknight.co.uk • www.sheldonbosleyknight.co.uk/